



RFM Integrated Device, Inc.

PRODUCT SPECIFICATION

Part Number: CDR6006

DR Filter, 5 GHz WiFi,
5522 MHz, BW 745, IL 2.5

Preliminary

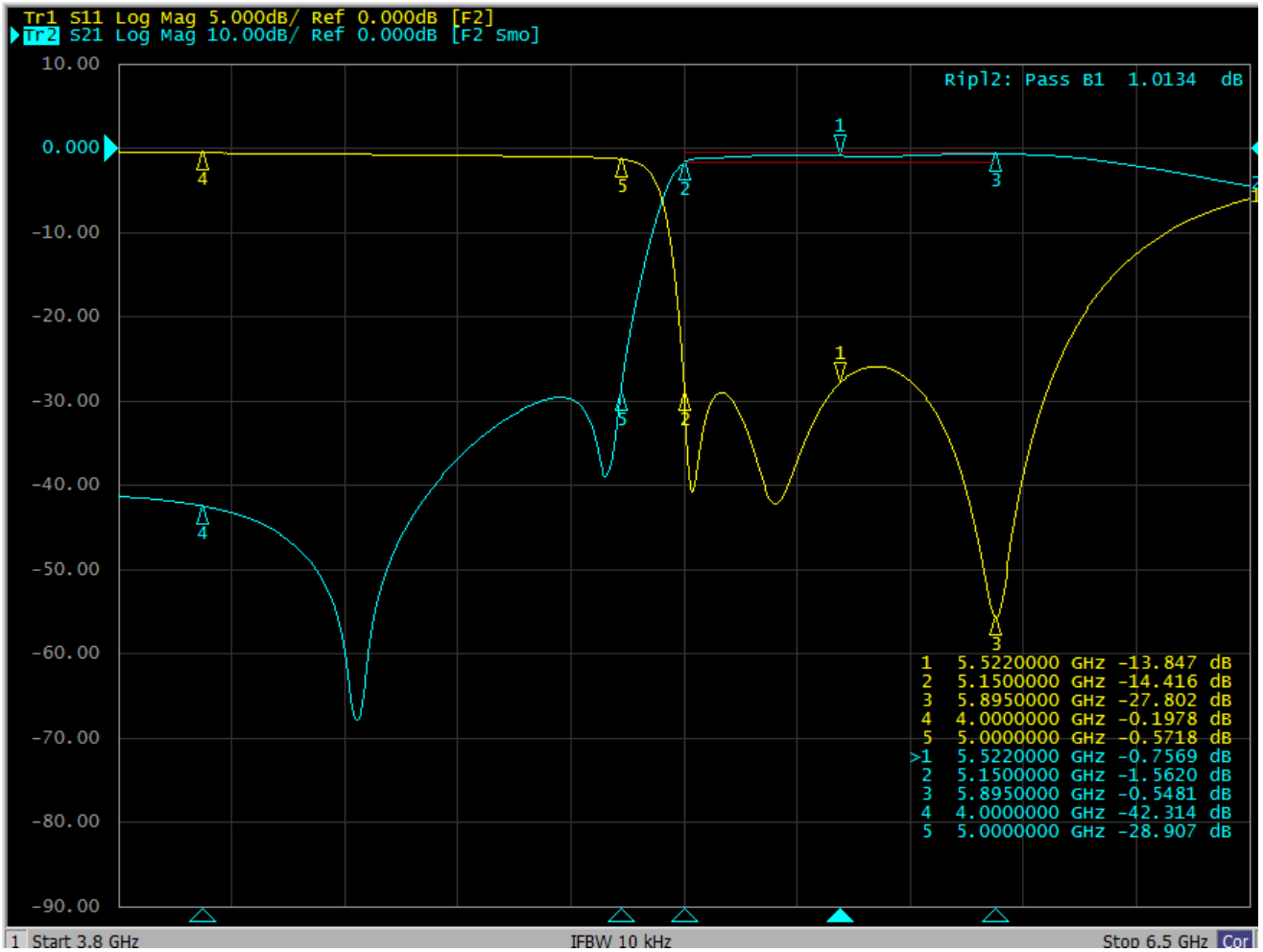
1. Electrical Specifications



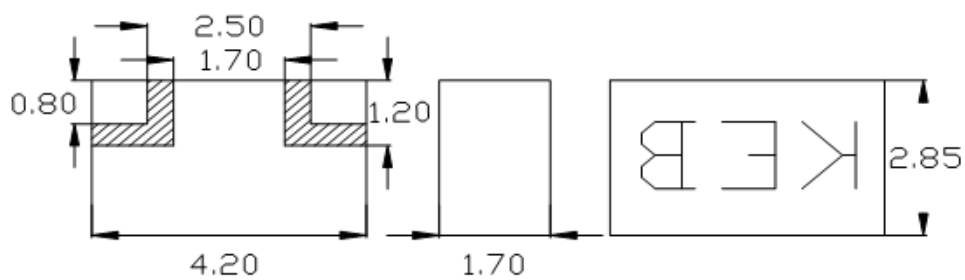
NO.	ITEM	SPECIFICATION
1	Center Frequency [fo]	5522MHz
1	Pass Band Width [BW]	5150~5895MHz
2	Insertion Loss (25°C)	2.0dB max.
3	Insertion Loss (105°C)	2.5dB max.
4	Ripple	1.2dB max.
5	Return Loss	10.0dB min.
6	Input/Output Impedance	50Ω
7	Max. Input Power	1W max.
8	Attenuation	25dB min. @ 4000~5000 MHz
9	Operation Temperature Range	-40 to +105°C

※Data is measured on Cirocomm EVB board

2. Data Results

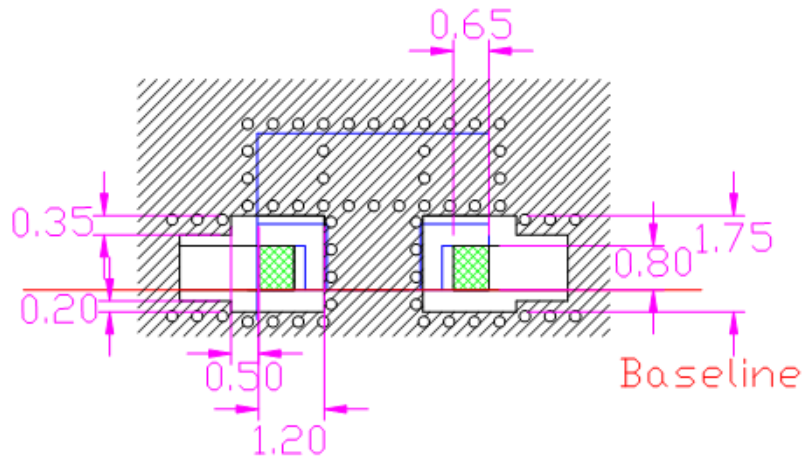


3. Dimension

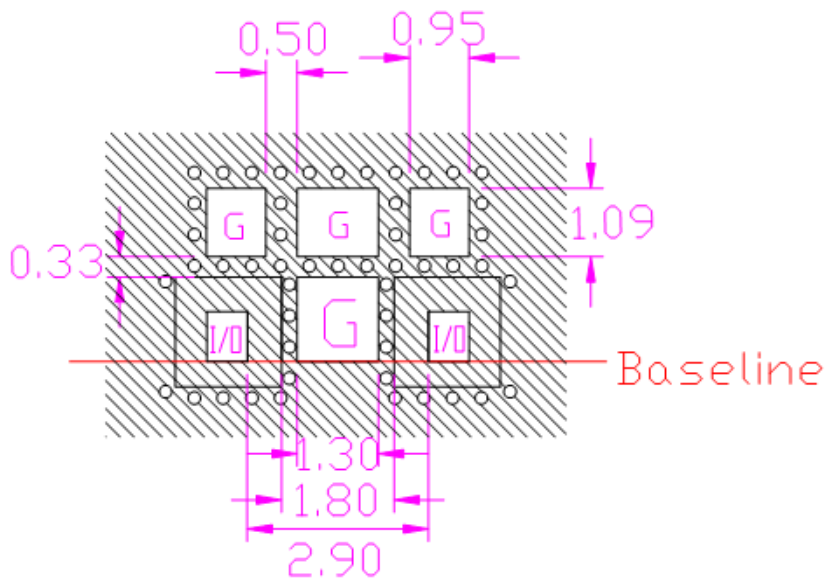


KE : Product name(J5522A)
 B : Year/Month (2020/02)
 Tolerance:±0.1mm

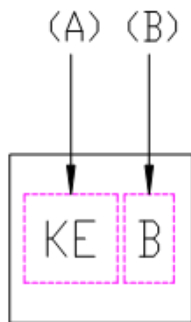
4. Footprint



5. Solder resist Pattern



6. Marking



(A) Product name : KE for 5522A

(B) Year/Month : Please refer to the Table-1

Table 1

Year	Month	Code	Year	Month	Code	Year	Month	Code	Year	Month	Code
2012 2016 2020 2024	1	A	2013 2017 2021 2025	1	N	2014 2018 2022 2026	1	A.	2015 2019 2023 2027	1	N.
	2	B		2	P		2	B.		2	P.
	3	C		3	Q		3	C.		3	Q.
	4	D		4	R		4	D.		4	R.
	5	E		5	S		5	E.		5	S.
	6	F		6	T		6	F.		6	T.
	7	G		7	U		7	G.		7	U.
	8	H		8	V		8	H.		8	V.
	9	J		9	W		9	J.		9	W.
	10	K		10	X		10	K.		10	X.
	11	L		11	Y		11	L.		11	Y.
	12	M		12	Z		12	M.		12	Z.