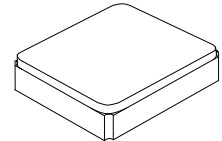


- **High Performance Crystal for Wireless Communications Devices**
- **Excellent Frequency Stability and Reliability**
- **Ultra-Miniature Surface Mount Seam Weld Package**
- **Complies with Directive 2002/95/EC (RoHS)**
- **AEC-Q200 Qualified**
- **Nominal Footprint: 2.0 x 1.6**
- **Moisture Sensitivity Level: 1**

XTL1061

**32.0000 MHz
Crystal Unit**



SM2016-4

Electrical Characteristics

Nominal Frequency	32.000000 MHz
Mode of Oscillation	Fundamental
Storage Temperature Range	-40°C to +105°C
Operating Temperature Range	-40°C to +85°C
Frequency Stability over Operating Temperature Range	+/-20 ppm (referred to the value at 25°C)
Frequency Make Tolerance (FL)	+/-10 ppm @ 25°C +/- 3°C
Equivalent Series Resistance (ESR)	60 Ω max
Nominal Drive Level	10uW typical and 100uW max
Shunt Capacitance (Co)	3.0 pF max
Load Capacitance (CL)	10 pF
G-sensitivity	+/-2ppb / G
Insulation Resistance	500 MΩ min./DC 100V
Marking	Laser Marking
Unit Weight	5.7mg+/-0.5mg

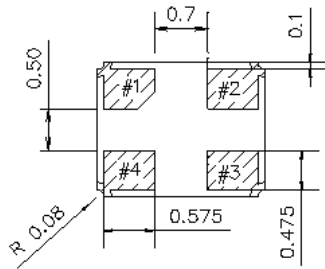
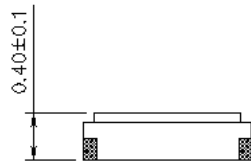
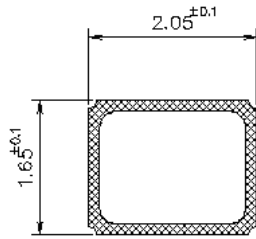


CAUTION: Electrostatic Sensitive Device. Observe precautions for handling.

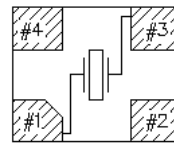
NOTES:

1. The design, manufacturing process, and specifications of this device are subject to change.
2. US or International patents may apply.
3. This component was always RoHS compliant from the first date of manufacture.

Mechanical Dimensions (mm): Base1



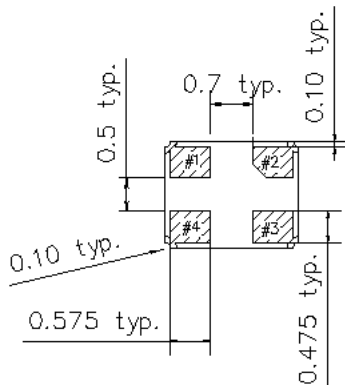
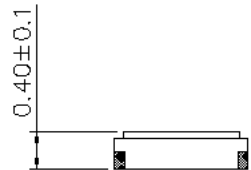
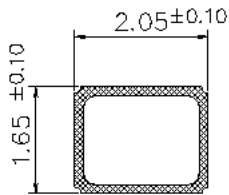
Internal Connections
(Top View)



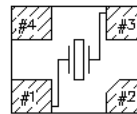
[NOTE] #2, #4 is connected with a metal cover

	Pin Connection
#1 pin	IN/OUT
#2 pin	GND
#3 pin	IN/OUT
#4 pin	GND

Base2



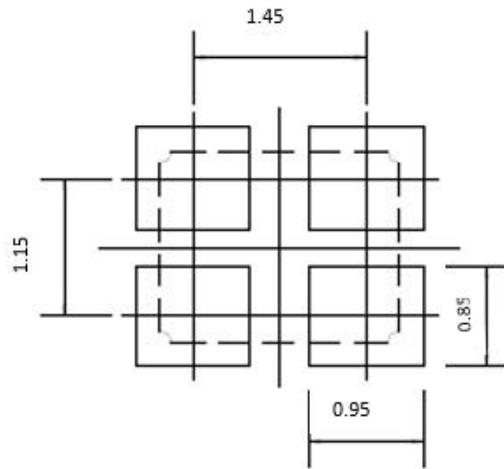
Internal Connections
(Top View)



[NOTE] #2, #4 is connected with a metal cover

	Pin connection
#1 Pin	IN/OUT
#2 Pin	GND
#3 Pin	IN/OUT
#4 Pin	GND

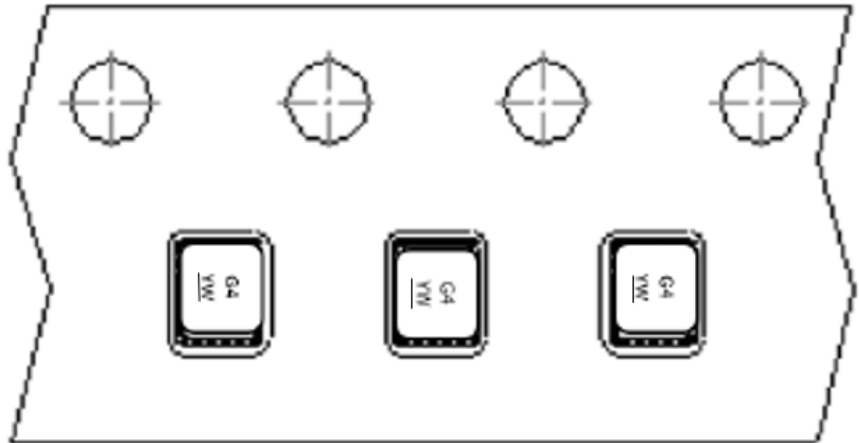
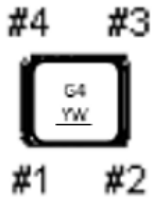
Recommended Land Pattern: (unit: mm)



Recommended Lane Pattern

Marking:

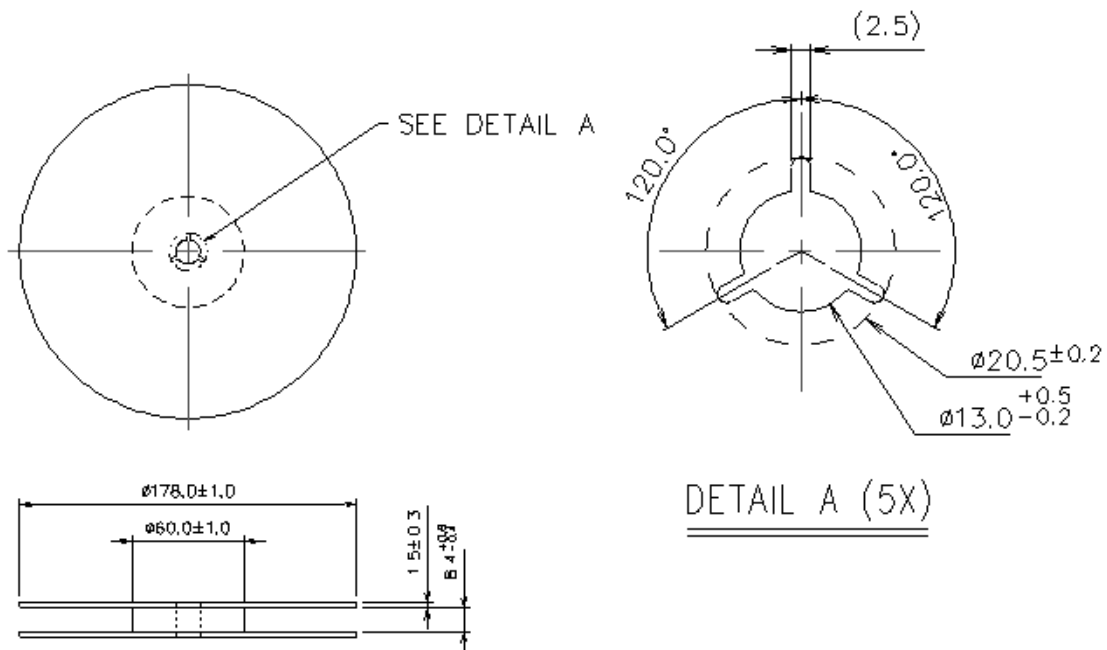
Y = Year, W = week



Reel Dimensions

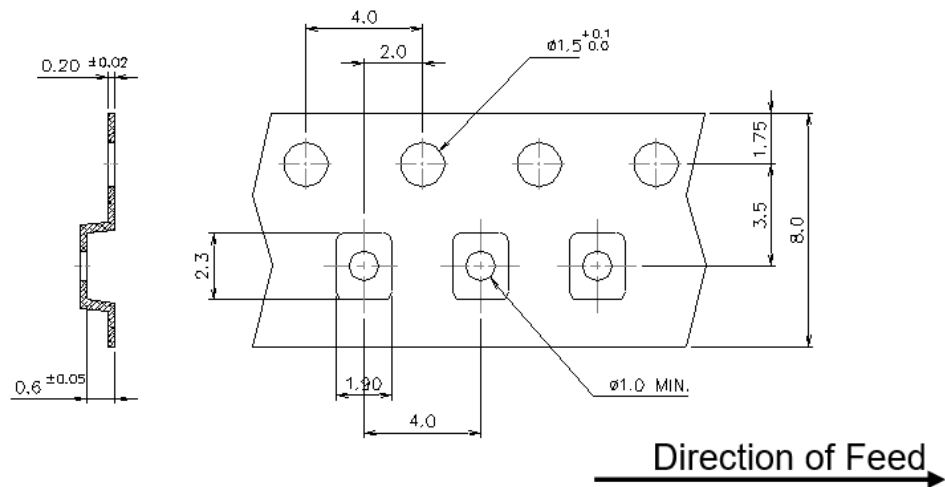
Reel Count:
7" = 3000

Tape and Reel Standard per ANSI/EIA-481



DETAIL A (5X)

Tape Dimensions

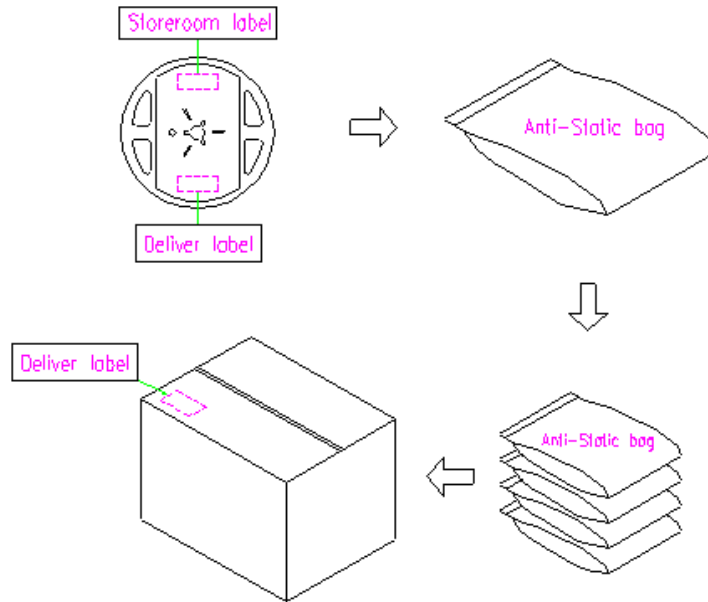


[NOTE]:

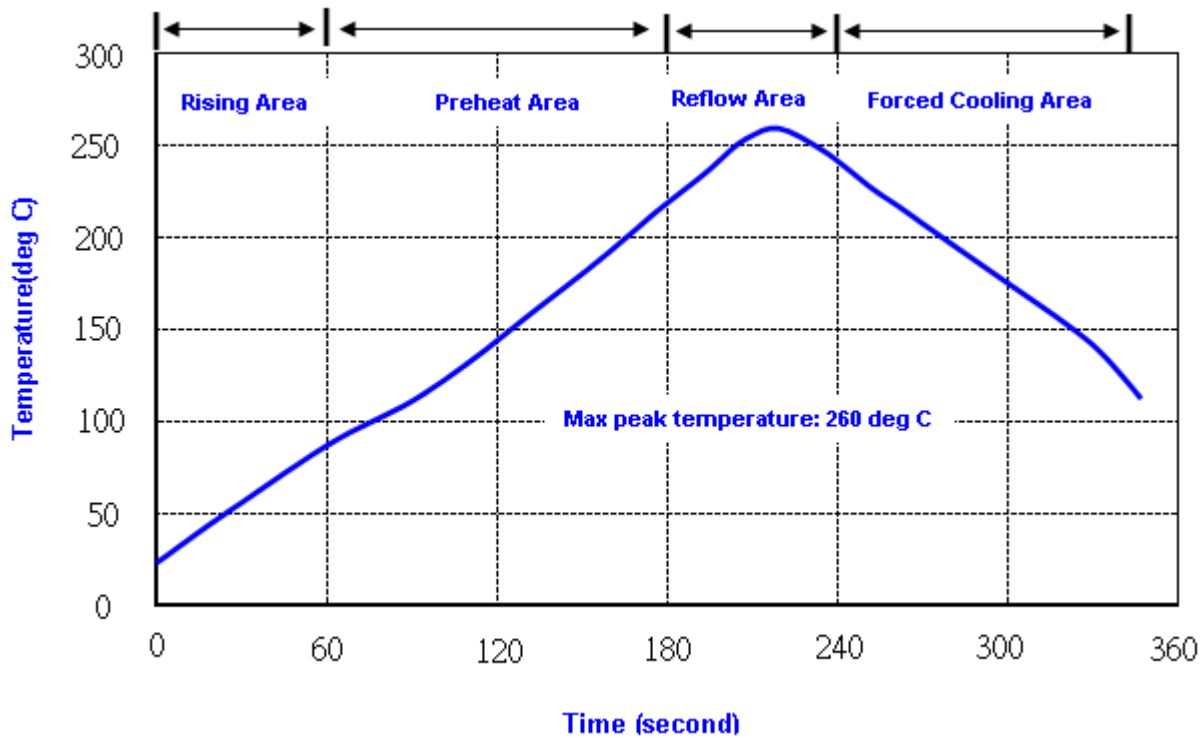
1. Unless otherwise specified tolerance on dimension +/-0.1 mm.
2. Material: conductive polystyrene with color black.
3. 10 pitch cumulative tolerance +/-0.2 mm.

Packing Quantity/Packing:

3K pcs maximum per reel



Reflow Profile:



Note: 1. Max peak temperature: 260+/-5 deg C; Time: 10+/-2 sec
2. Temperature: 217+/-5 deg C; Time: 90~100 sec