

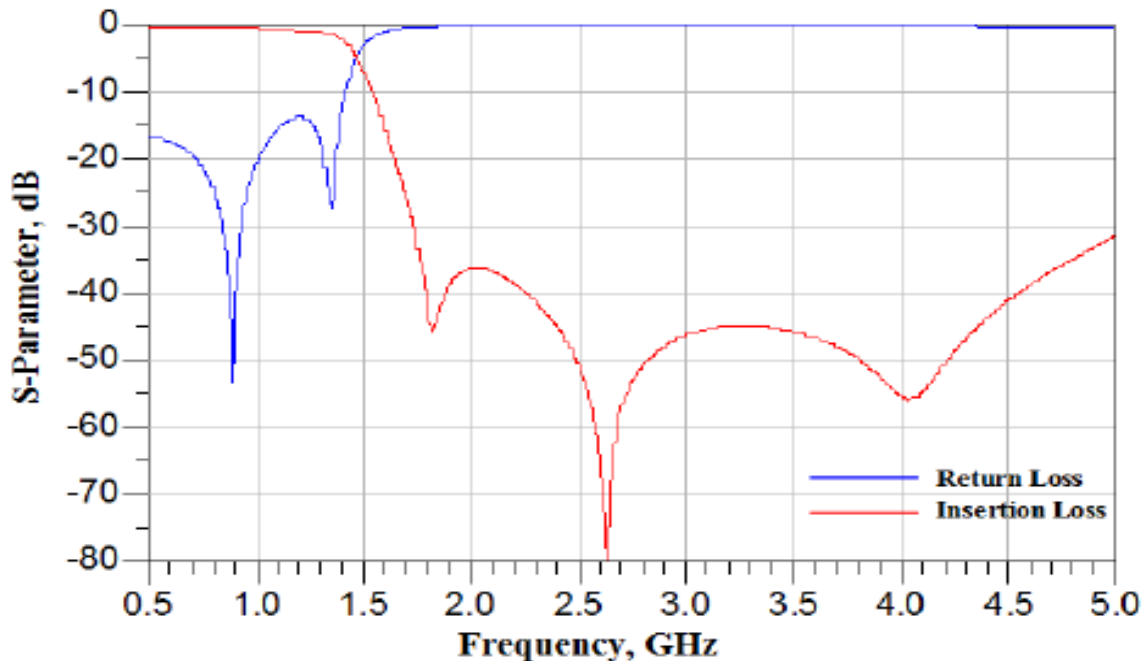
**Maximum Rating:**

- Operating Temperature: -40°C to +85°C
- Storage Temperature: -40°C to +85°C
- Input Power Level: 30 dBm
- Moisture Sensitivity Level: Level (MSL1)

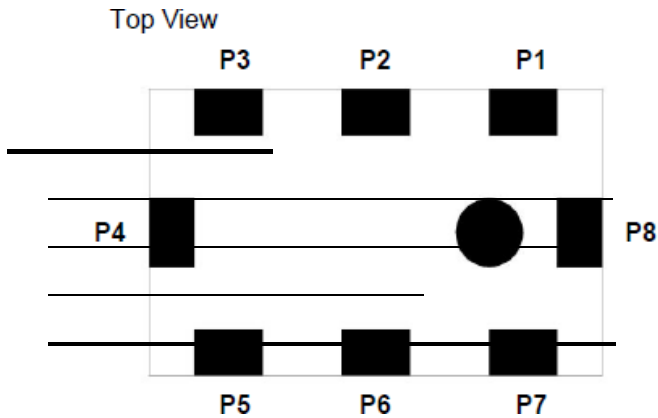
**Electrical Characteristics:**

Item	Unit	Spec	Note
<b>Center Frequency</b> <b>Fc</b>	MHz	915	
<b>Insertion Loss</b> (902~928 MHz) <b>IL</b>	dB	0.5 Max	at 25°C
<b>Insertion Loss</b> (902~928 MHz) <b>IL</b>	dB	0.7 Max	at -40°C~85°C
<b>Return Loss</b> (902~928 MHz)	dB	14 Min	
<b>Attenuation</b>			
1804 ~ 1856    MHz	dB	30	
2705 ~ 2784    MHz	dB	30	
<b>Impedance</b>	Ohm	50	

**Frequency Characteristics:**



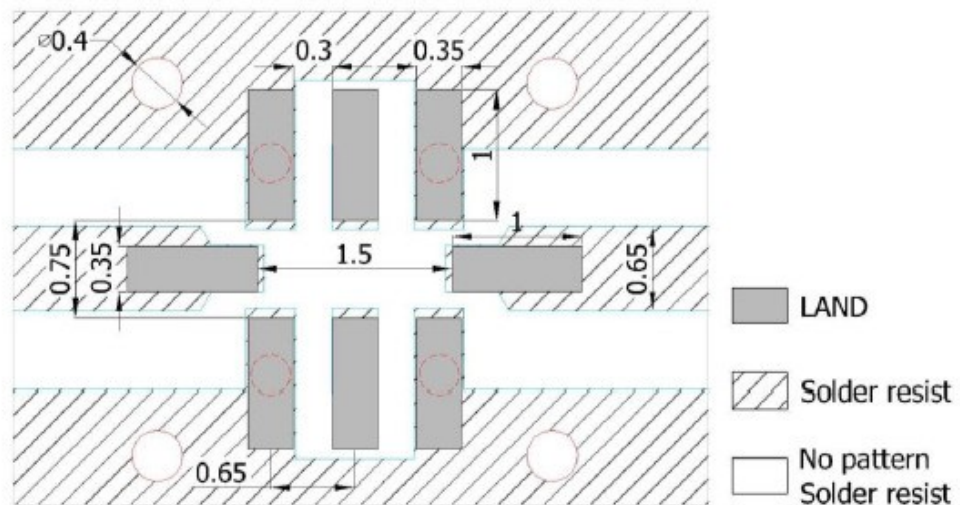
**Outline Drawing:**



PIN	Definition	PIN	Definition
P1	Ground	P5	Ground
P2	NC	P6	NC
P3	Ground	P7	Ground
P4	Input / output	P8	Input / output

Figure	Symbol	Dimension (mm)
	L	2.00 ± 0.15
	W	1.25 ± 0.15
	T	0.95 ± 0.15
	A	0.20 ± 0.15
	B	0.30 ± 0.15
	C	0.35 ± 0.15
	D	0.65 ± 0.15
	E	0.20 ± 0.15
	F	0.20 ± 0.15
	G	0.475 ± 0.15
H	0.30 ± 0.15	

**PCB Footprint:**



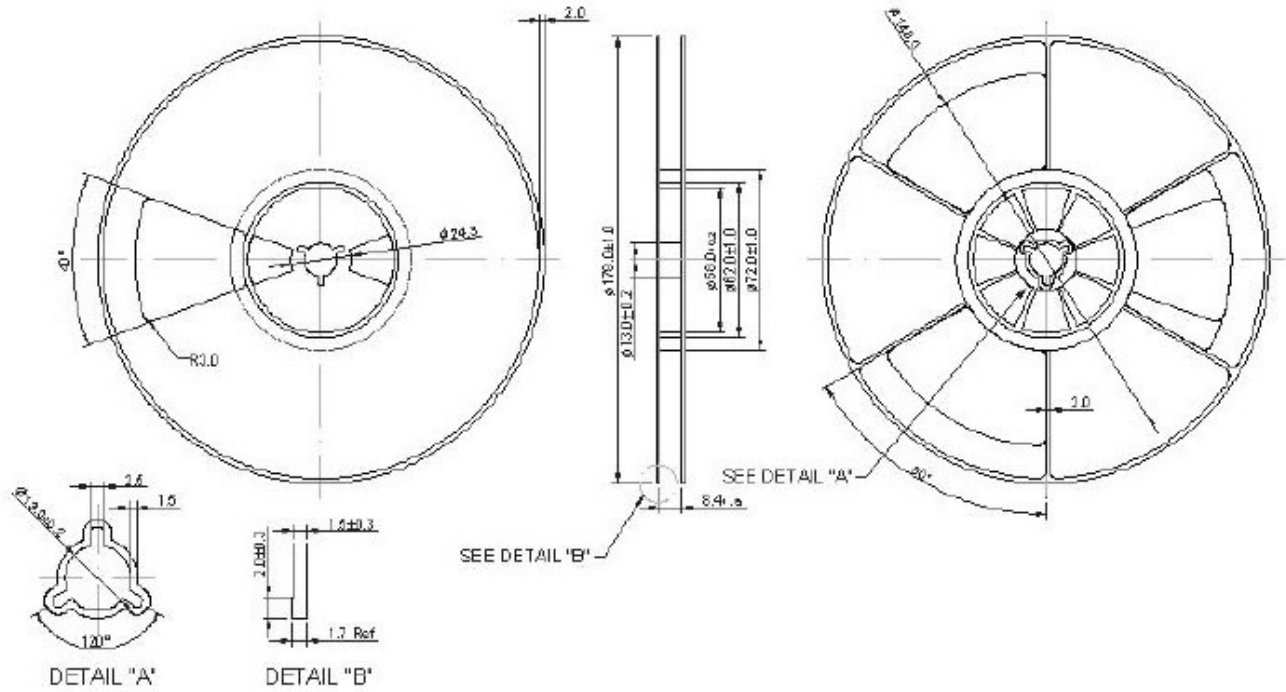
Unit : mm

Line width to be designed to match 50 Ω characteristic impedance, depending on PCB material and thickness.

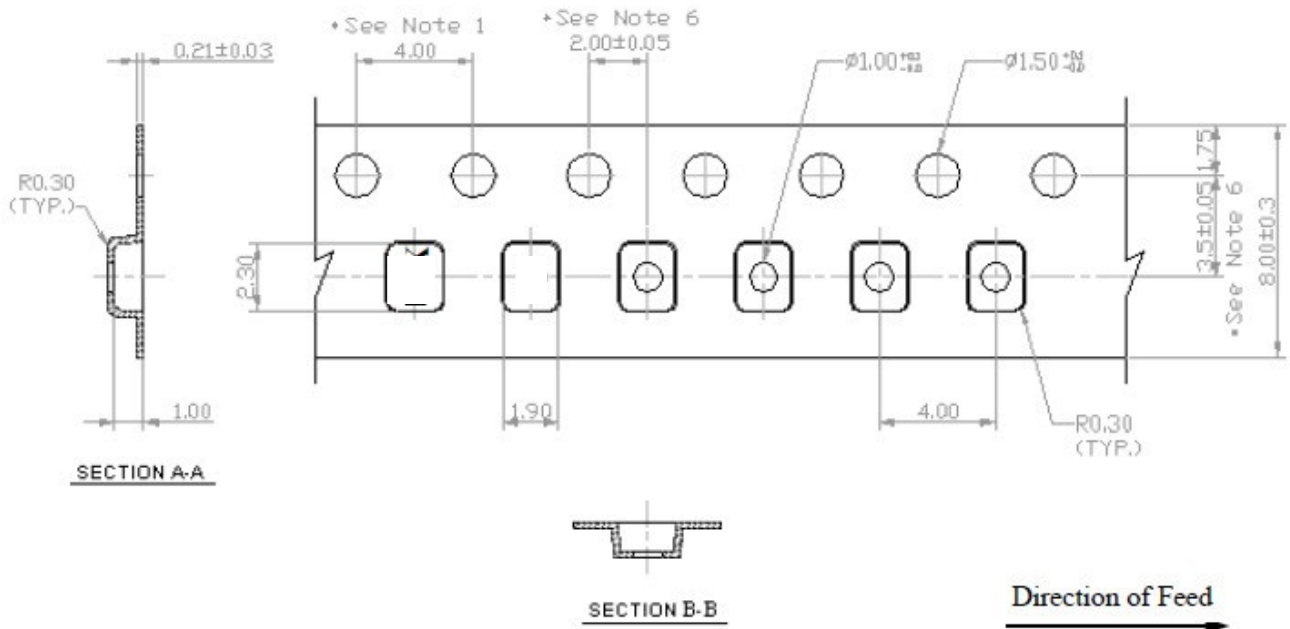
# Packing

## 1. REEL DIMENSION

(Reel Count : 7"=2000 )

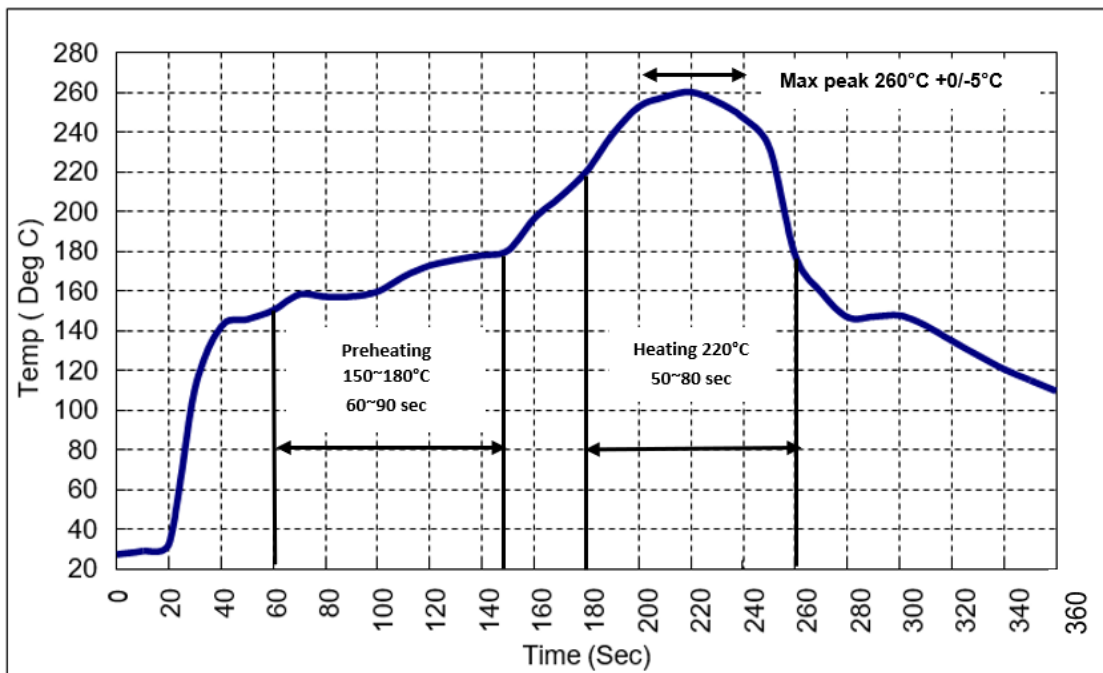


## 2. Tape Dimension



## Recommended reflow profile :

1. Preheating shall be fixed at 150~180°C for 60~90 seconds.
2. Ascending time to preheating temperature 150°C shall be 30 seconds min.
3. Heating shall be fixed at 220°C for 50~80 seconds and at 260°C +0/-5°C peak (10 seconds).
4. Time: 5 times maximum.



**CAUTION: Electrostatic Sensitive Device. Observe precautions for handling.**

### NOTES:

1. The design, manufacturing process, and specifications of this device are subject to change.
2. US or International patents may apply.
3. RoHS compliant from the first date of manufacture.