

CF1024

**7240 MHz
LTCC Filter**

**Package Dimensions
2.0 X 1.25 X 0.95 mm**

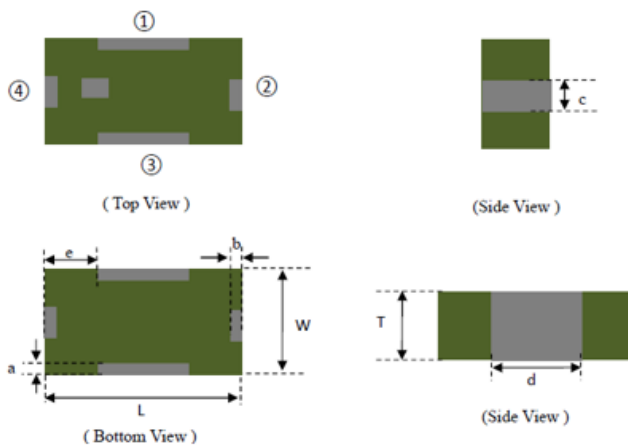
Maximum Rating:

- Input Power : 3W
- DC Voltage : 0 V
- Operating Temperature: -40°C to +105°C
- Storage Temperature: -40°C to +105°C
- Moisture Sensitivity Level: Level 1 (MSL 1)

Electrical Characteristics:

Item		Unit	Spec
Center frequency		MHz	7240
Insertion Loss	6240~8240MHz	dB	2.5Max
Return Loss	6240~8240MHz	dB	10Min
Ripple	6240~8240MHz	dB	1.0Max
Delay	6240~8240MHz	ns	3.0Max
Attenuation	DC~5200 MHz	dB	35Min
	2400~2500 MHz	dB	35Min
	5200~5860 MHz	dB	15Min
	9000~9500 MHz	dB	10Min
	9500~18000 MHz	dB	30Min

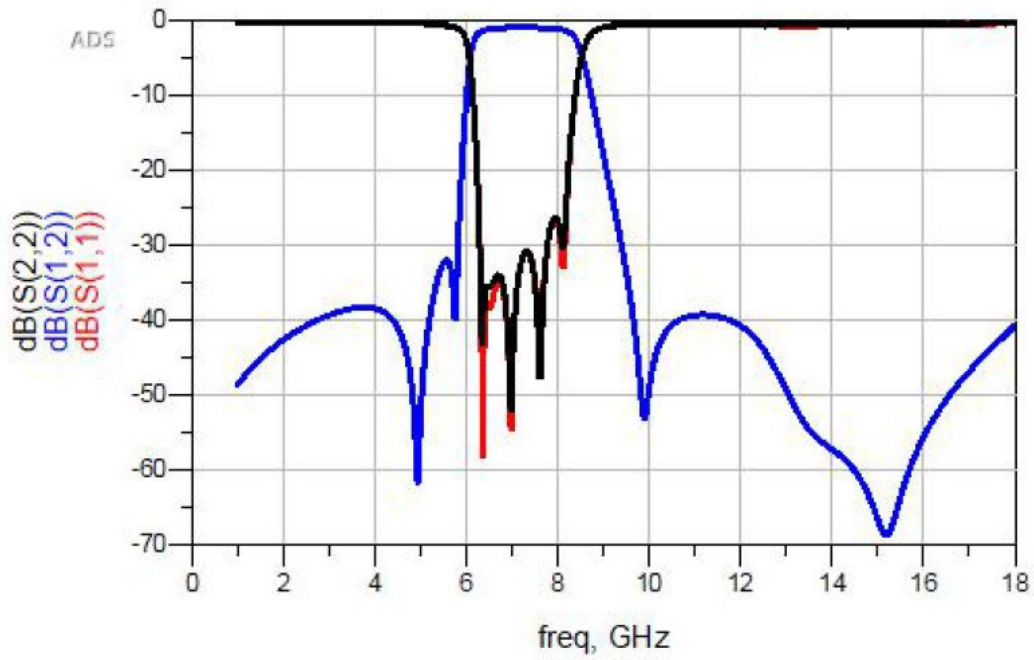
Outline Drawing:



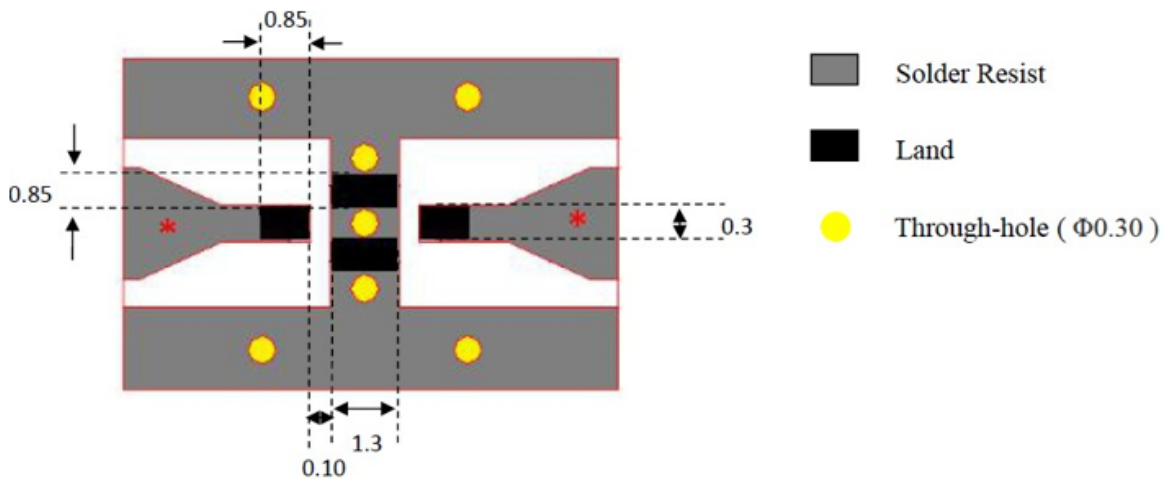
Number	Terminal Name
①	GND
②	OUT
③	GND
④	IN

Symbols	L	W	T	a	b	c	d	e
Dimensions	2.0+/-0.15	1.25+/-0.10	0.95+/-0.10	0.25+/-0.10	0.25+/-0.10	0.3+/-0.10	1.3+/-0.10	0.35+/-0.10

Frequency Characteristics:

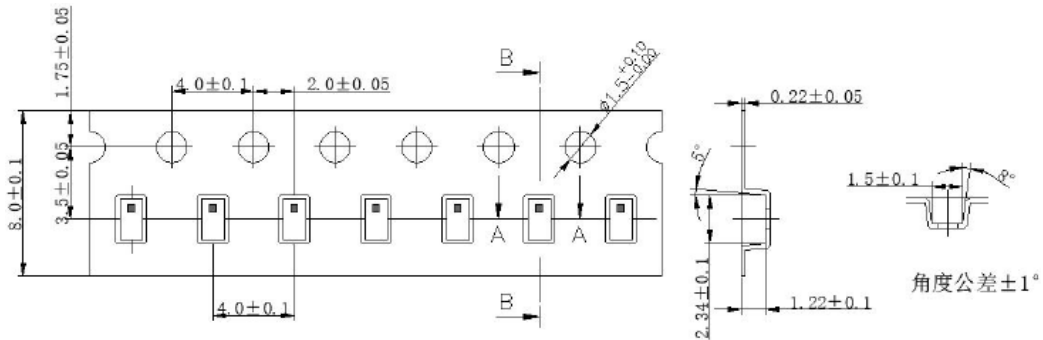


Pcb Foot Print:

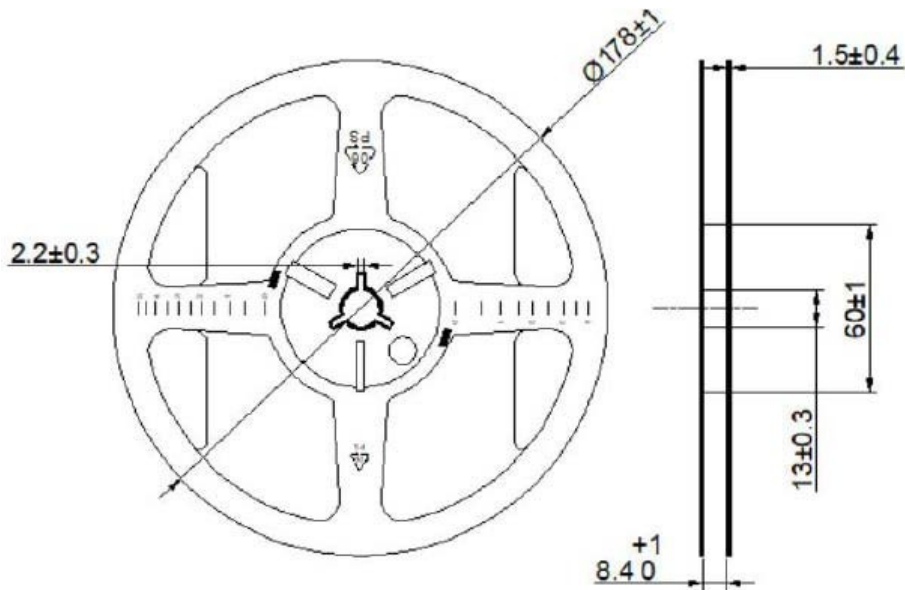


*Line width should be designed to match 50Ω characteristic impedance, depending on PCB material and thickness

Packing: 1.
Plastic Tape

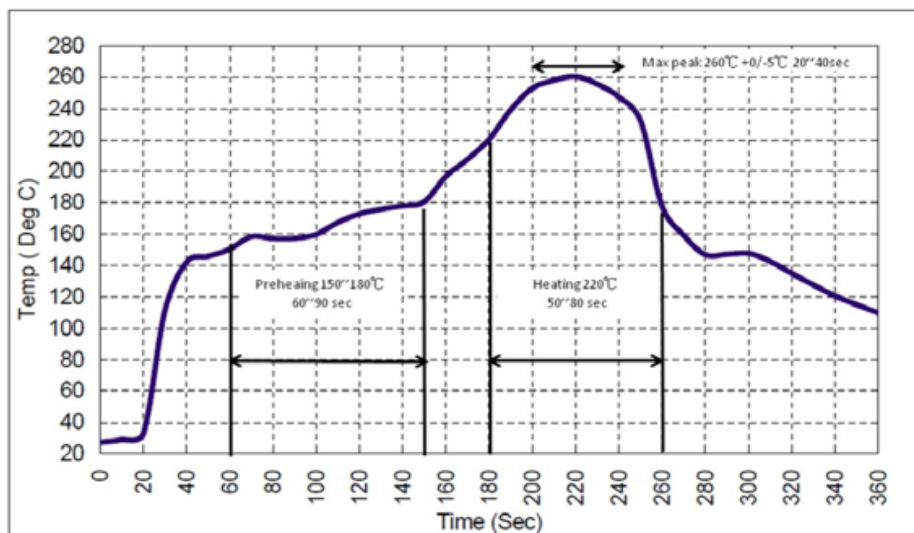


2. Reel (4000 pcs/Reel)



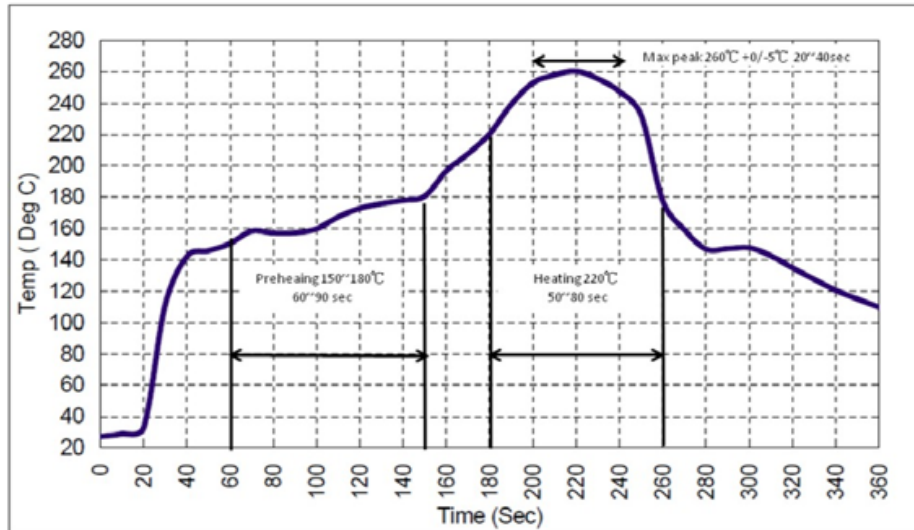
Recommended Solder Profile

1. Preheating shall be fixed at 150~180°C for 60~90 seconds.
2. Ascending time to preheating temperature 150°C shall be 30 seconds min.
3. Heating shall be fixed at 220°C for 50~80 seconds and at 260°C +0/-5°C peak (20~40sec).
4. Time: 2 times.



Recommended Solder Profile

1. Preheating shall be fixed at 150~180°C for 60~90 seconds.
2. Ascending time to preheating temperature 150°C shall be 30 seconds min.
3. Heating shall be fixed at 220°C for 50~80 seconds and at 260°C +0/-5°C peak (20~40sec).
4. Time: 2 times.



CAUTION: Electrostatic Sensitive Device. Observe precautions for handling.

NOTES:

1. The design, manufacturing process, and specifications of this device are subject to change.
2. US or International patents may apply.
3. RoHS compliant from the first date of manufacture.