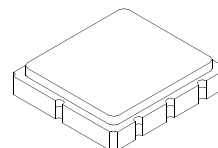


- **Complies with Directive 2002/95/EC (RoHS)**
- **AEC-Q200 Qualified**

**SF2364C**

**868.30 MHz**



**SM5050-8**

**Maximum Rating**

Rating	Value	Units
Input Power Level	0	dBm
DC Voltage on any Non-ground Terminal	0	V
Operating Temperature Range	-45 to +90	°C
Storage Temperature Range	-45 to +90	°C
Moisture Sensitivity Level: 1		
Symbolization: B66, <u>YWWS</u> (Y= year, WW = week, S= shift)		

**Electrical Characteristics**

Reference Temperature 25 °C

Item	Min.	Typ.	Max.	Note
Center frequency $F_c$ (MHz)	-	868.30	-	1
Minimum I.L. (868~868.78 MHz) (dB) $IL_{min}$	-	2.7	4.2	
Pass band (relative to $IL_{min}$ )				
868~868.78 MHz (dB)	-	1.0	3.0	1
867.9~868.88 MHz (dB)	-	1.5	6.0	
Pass bandwidth (relative to $IL_{min}$ ) $W_3$ (KHz)	-	1500	-	
Attenuation:( relative to $IL_{min}$ ) (dB )				
10~700 MHz (dB )	50	55	-	
700~830 MHz (dB )	40	45	-	
830~850 MHz (dB )	35	40	-	
850~865.02 MHz (dB )	25	28	-	1
871~874.5 MHz (dB )	11	15	-	
874.5~883 MHz (dB )	16	21	-	
883~900 MHz (dB )	30	35	-	
900~1000 MHz (dB )	40	45	-	
Impedance at $F_c$ ; Input $Z_{IN} = R_{IN} // C_{IN}$	117Ω // 3.7 pF			
Output $Z_{OUT} = R_{OUT} // C_{OUT}$	117Ω // 3.7 pF			

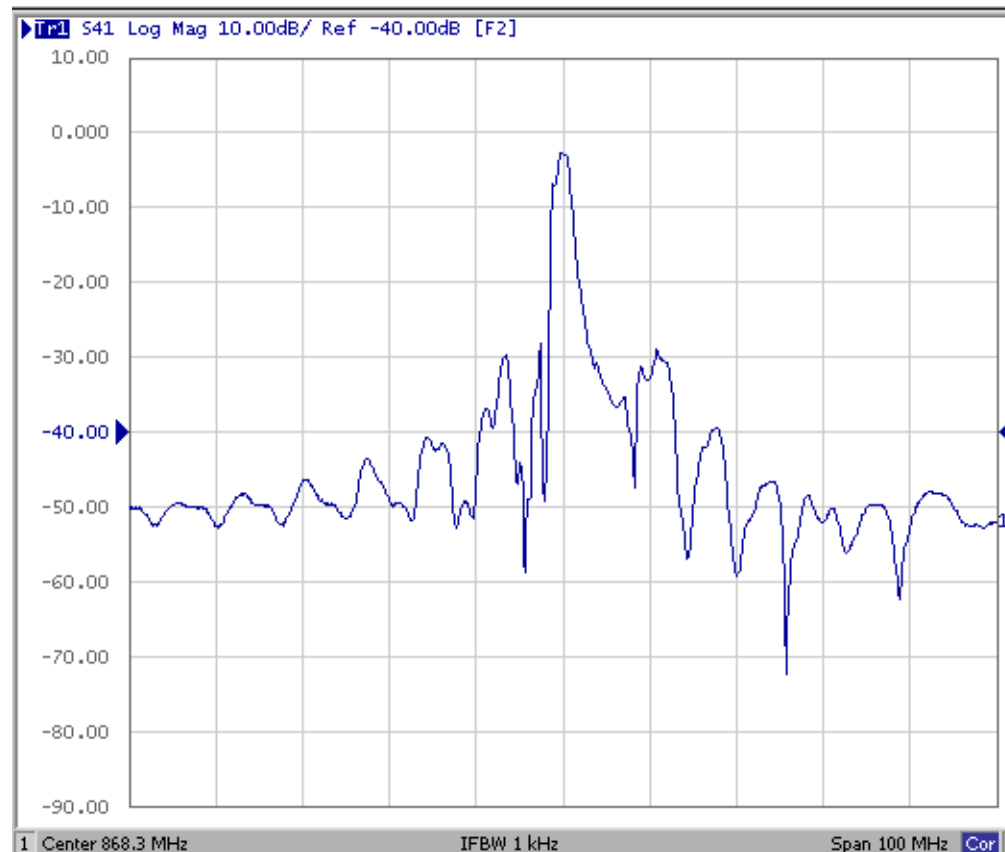
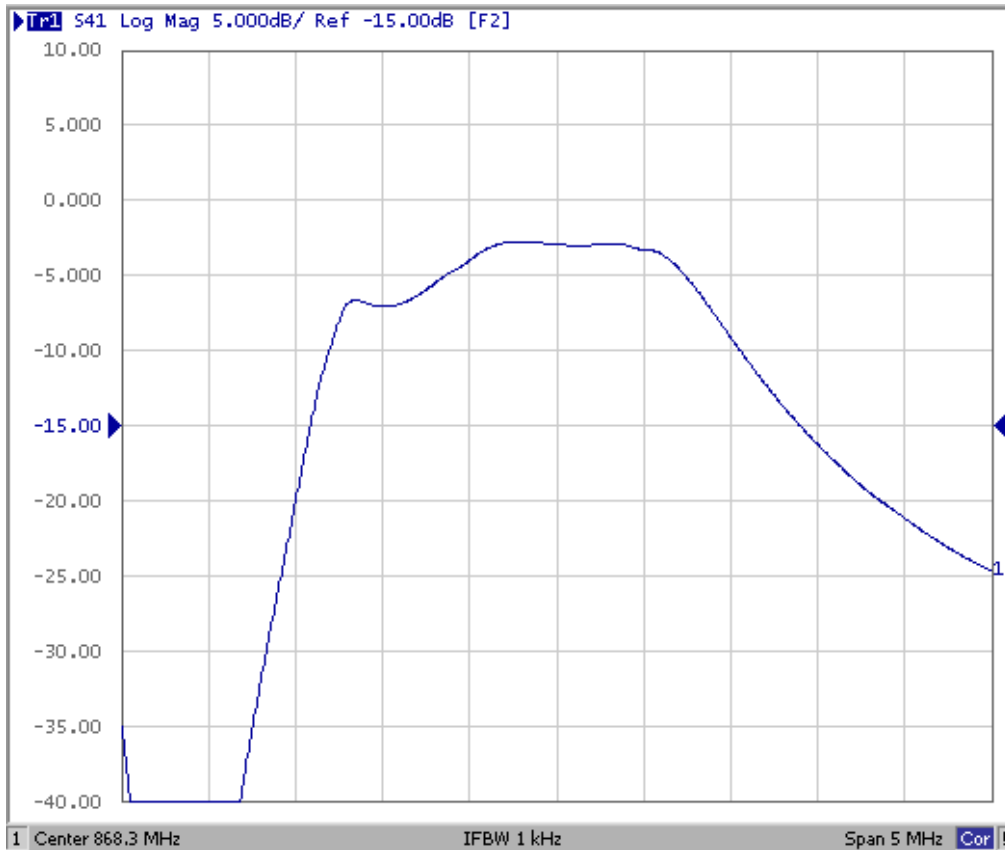
Note1. The standard definitions is in JIS C 6703

 **CAUTION: Electrostatic Sensitive Device. Observe precautions for handling.**  
**NOTES:**

1. The design, manufacturing process, and specifications of this device are subject to change.
2. US or International patents may apply.
3. RoHS compliant from the first date of manufacture.

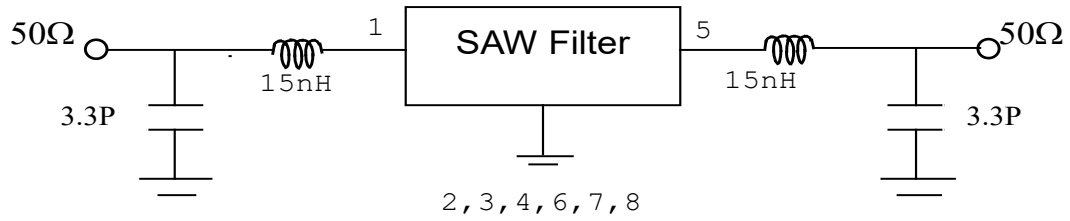
# Frequency Characteristics

The response included the loss of matching circuit.

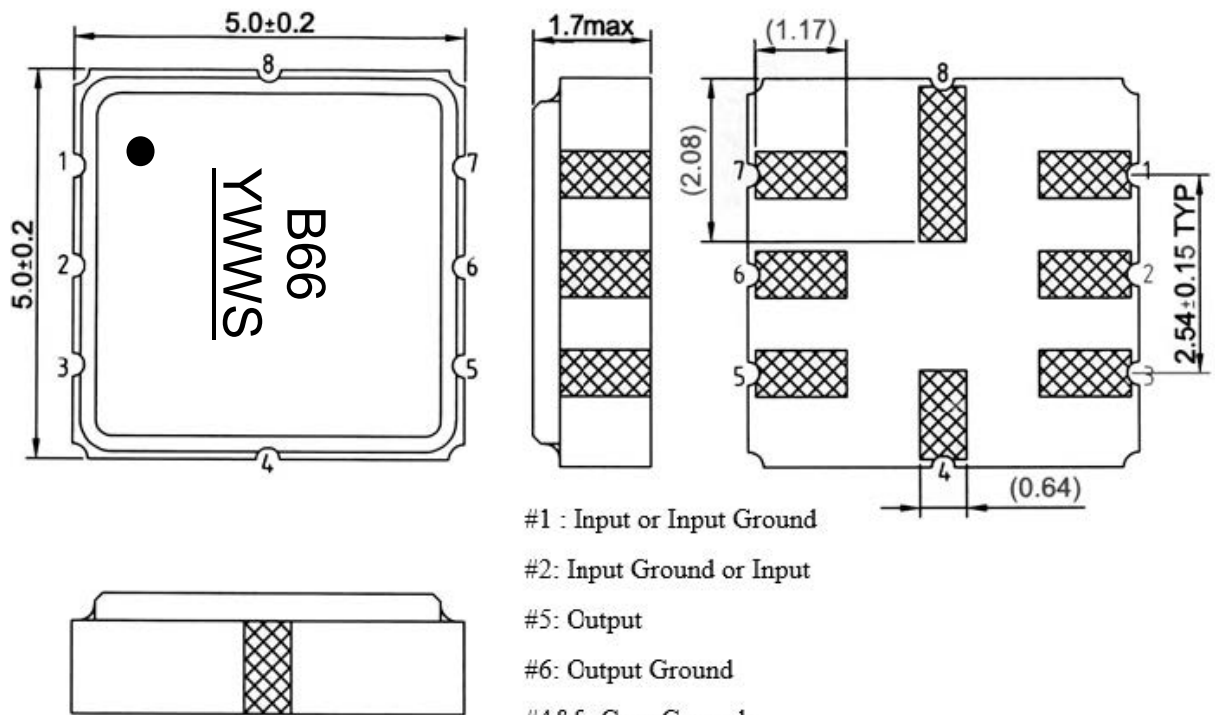


## Measurement Circuit

HP Network analyzer



## Outline Drawing



#1 : Input or Input Ground

#2: Input Ground or Input

#5: Output

#6: Output Ground

#4&8: Case Ground

#3&7: Ground

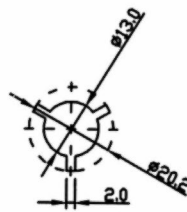
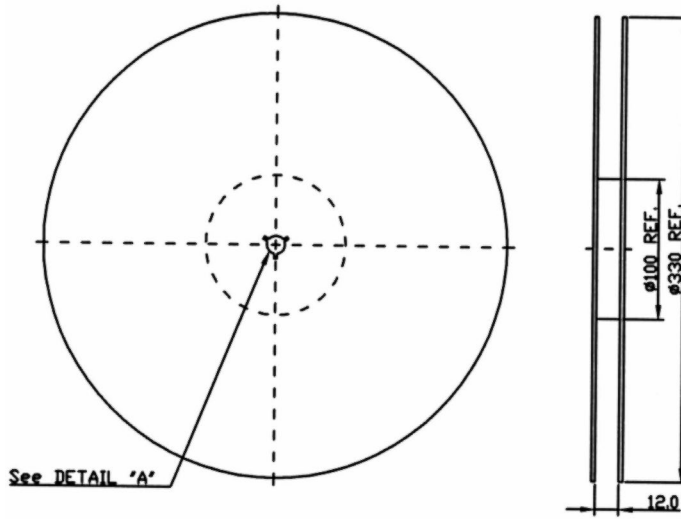
Unit: mm

# Packing

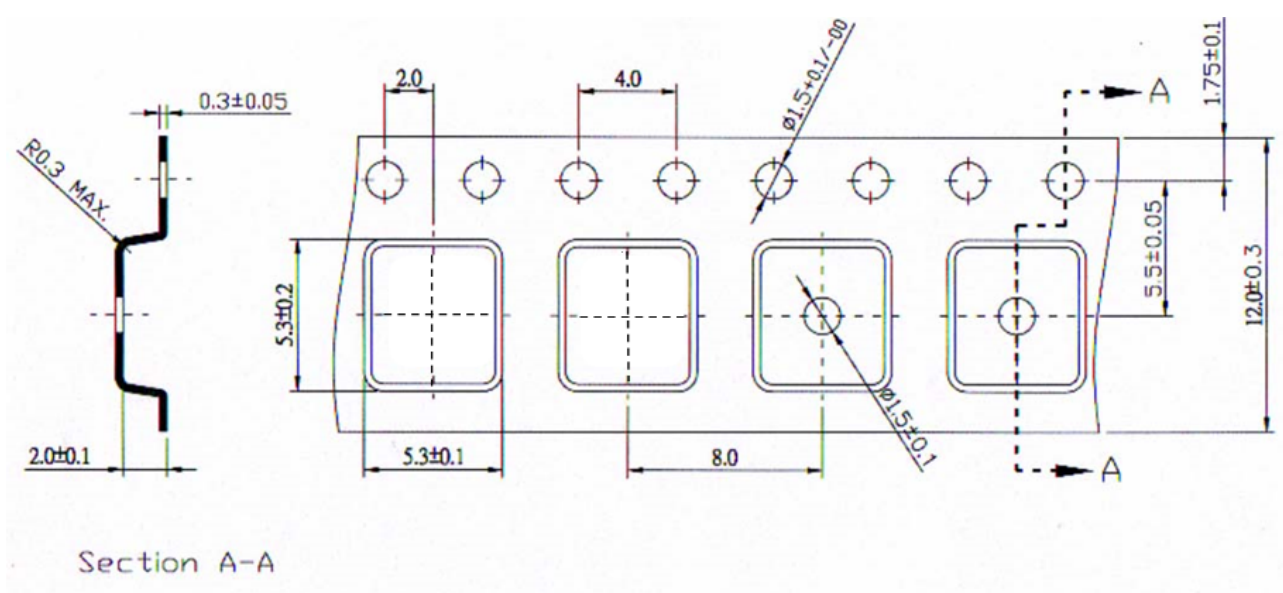
Reel Dimensions

Tape and Reel Standard per ANSI/EIA-481

Reel Count:  
7" = 500  
13" = 3000



Tape Dimensions



## Recommended Reflow Profile

1. Preheating shall be fixed at 150~180°C for 60~90 seconds.
2. Ascending time to preheating temperature 150°C shall be 30 seconds min.
3. Heating shall be fixed at 220°C for 50~80 seconds and at 260°C +0/-5°C peak (10 seconds).
4. Time: 5 times maximum.

