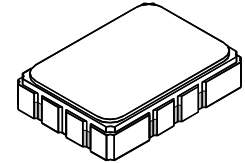


SF2514B

**50 MHz
SAW Filter**



SMP-03

Rating	Value	Units
Input power level	30	dBm
DC voltage	3	VDC
Specification Temperature Range	-40 to +85	°C
Storage Range in tape	-55 to +125	°C
Moisture sensitivity level: 1		
Case Style: SMP-03, 5.0 x 7.0 nominal footprint		
Symbolization: RFM, SF2514B, YYWWS (YY = year, WW = week, S = shift, ## = Sequence Code)		

ELECTRICAL CHARACTERISTICS:

Item	Unit	Min.	Typ.	Max.
Center Frequency F_c	MHz	-	50	-
Minimum Insertion Loss IL_{min}	dB	-	11.5	13.0
1 dB Bandwidth	MHz	10.0	11.6	-
Amplitude Ripple (F_c±5 MHz)	dB	-	0.8	1.0
Group Delay Ripple (F_c±5 MHz)	nsec	-	90	140
Absolute Group Delay	µsec	-	0.74	-
Return Loss (F_c±5 MHz)	dB	9.0	9.5	-
Attenuation (Reference level from IL _{min})				
DC ~ 35 MHz	dB	45	50	-
35 ~ 40 MHz	dB	25	45	-
60 ~ 65 MHz	dB	25	39	-
65 ~ 1000 MHz	dB	40	46	-
Temperature Coefficient of Frequency	ppm/°C	-94		

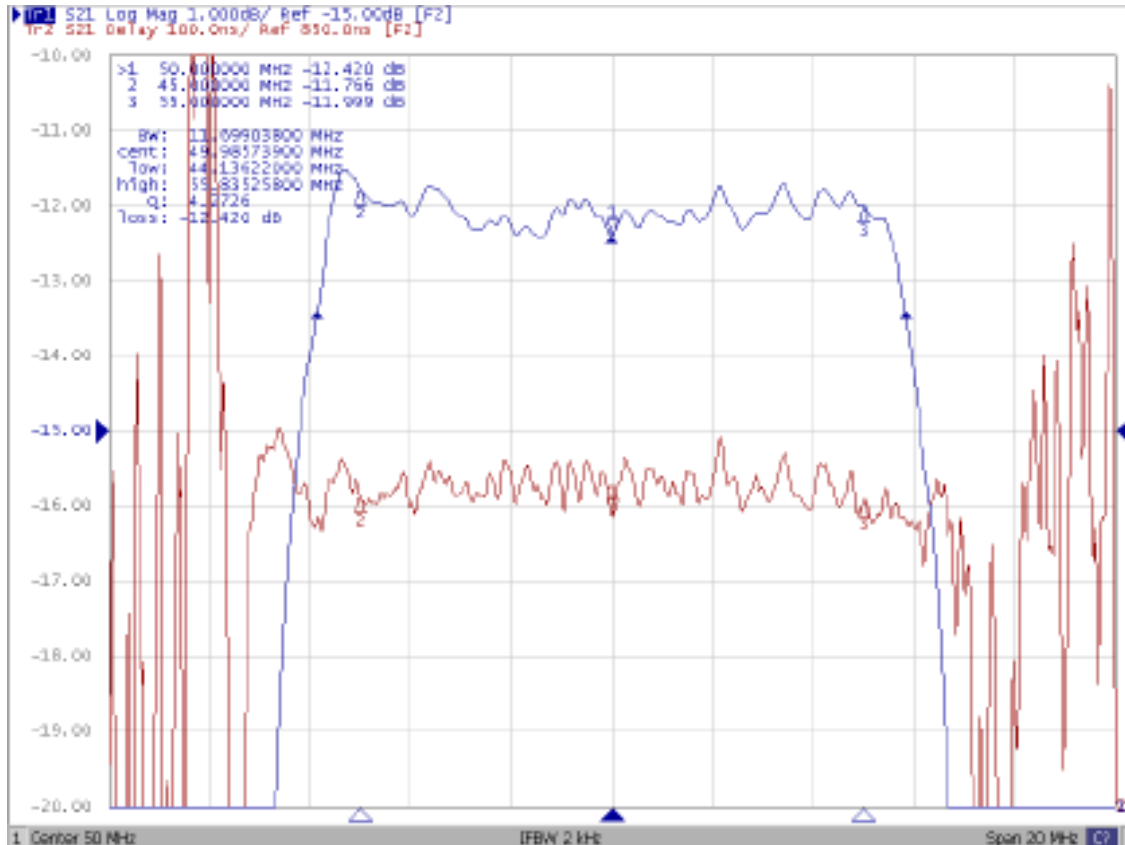
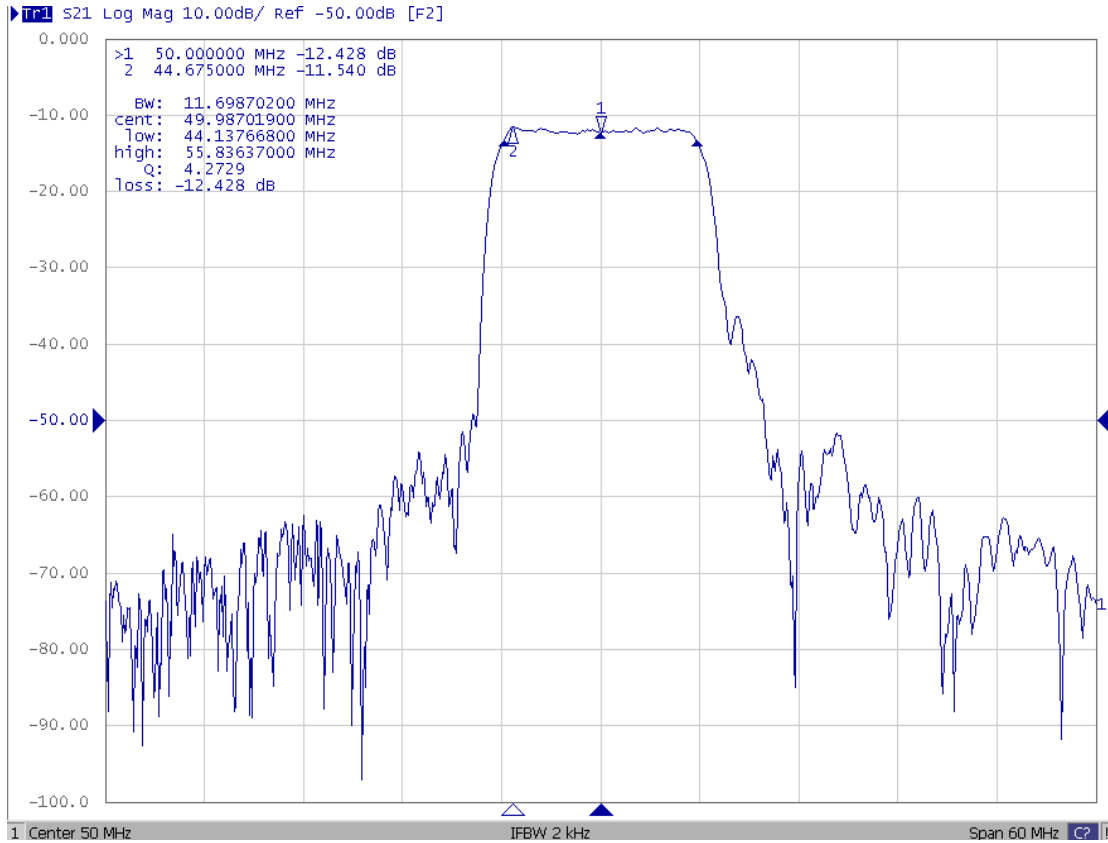


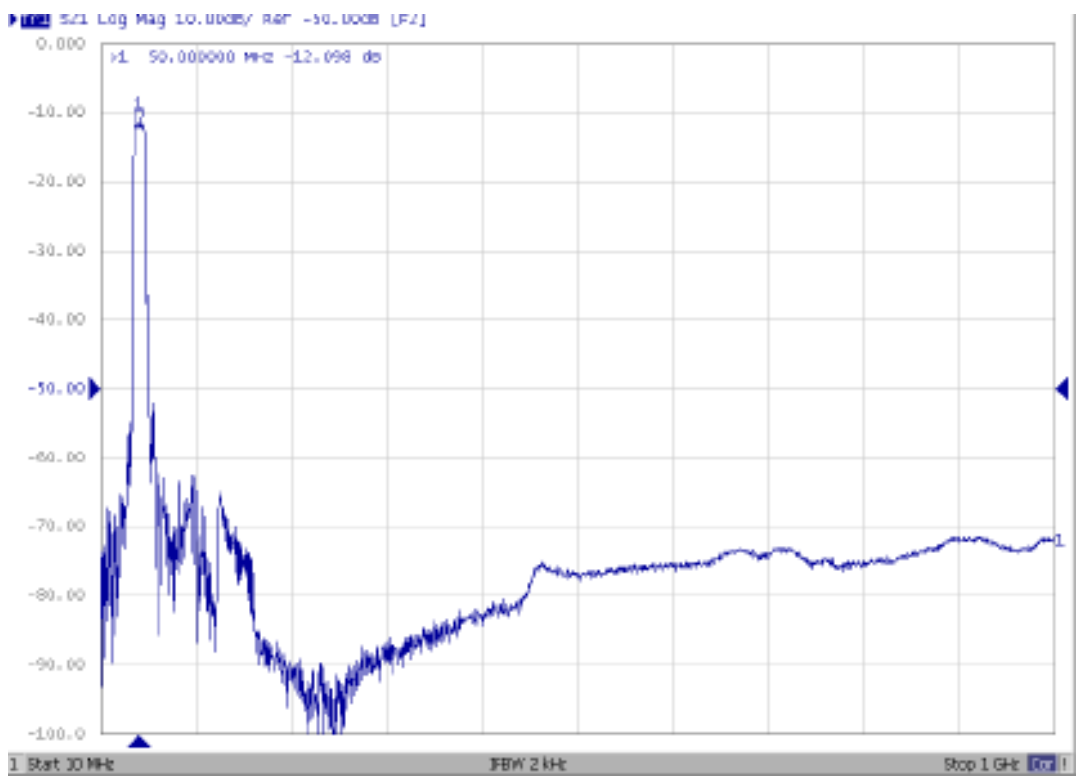
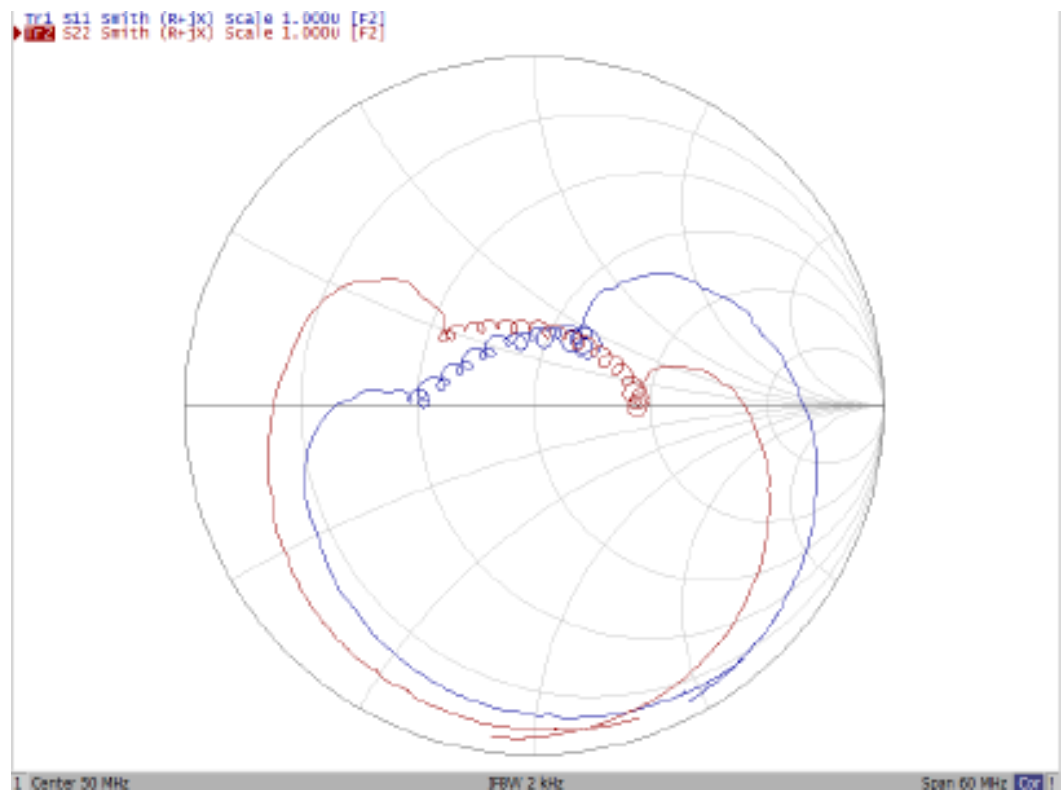
CAUTION: Electrostatic Sensitive Device. Observe precautions for handling.

NOTES:

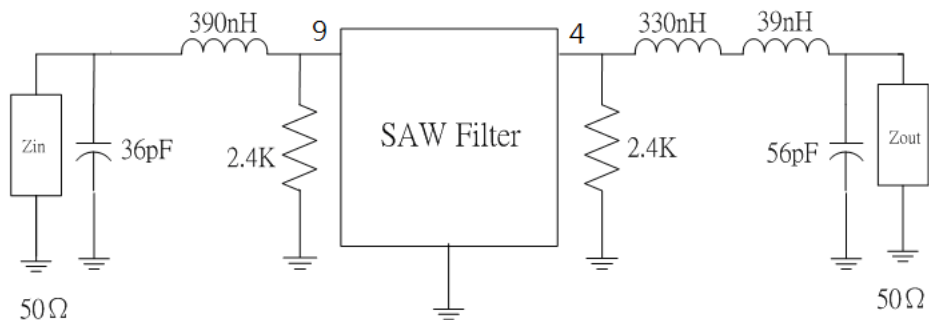
1. The design, manufacturing process, and specifications of this device are subject to change.
2. US or International patents may apply.
3. RoHS compliant from the first date of manufacture.

FREQUENCY CHARACTERISTIC:

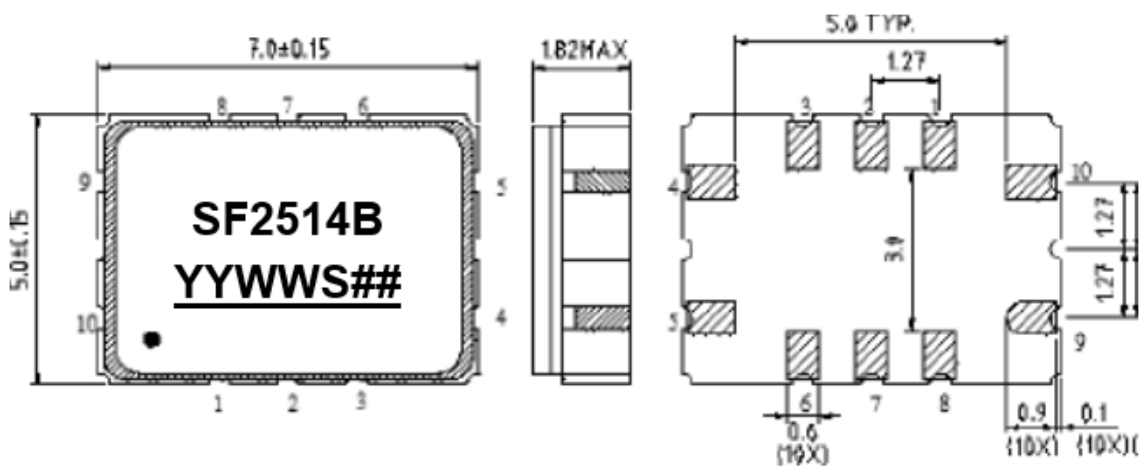




MEASUREMENT CIRCUIT:

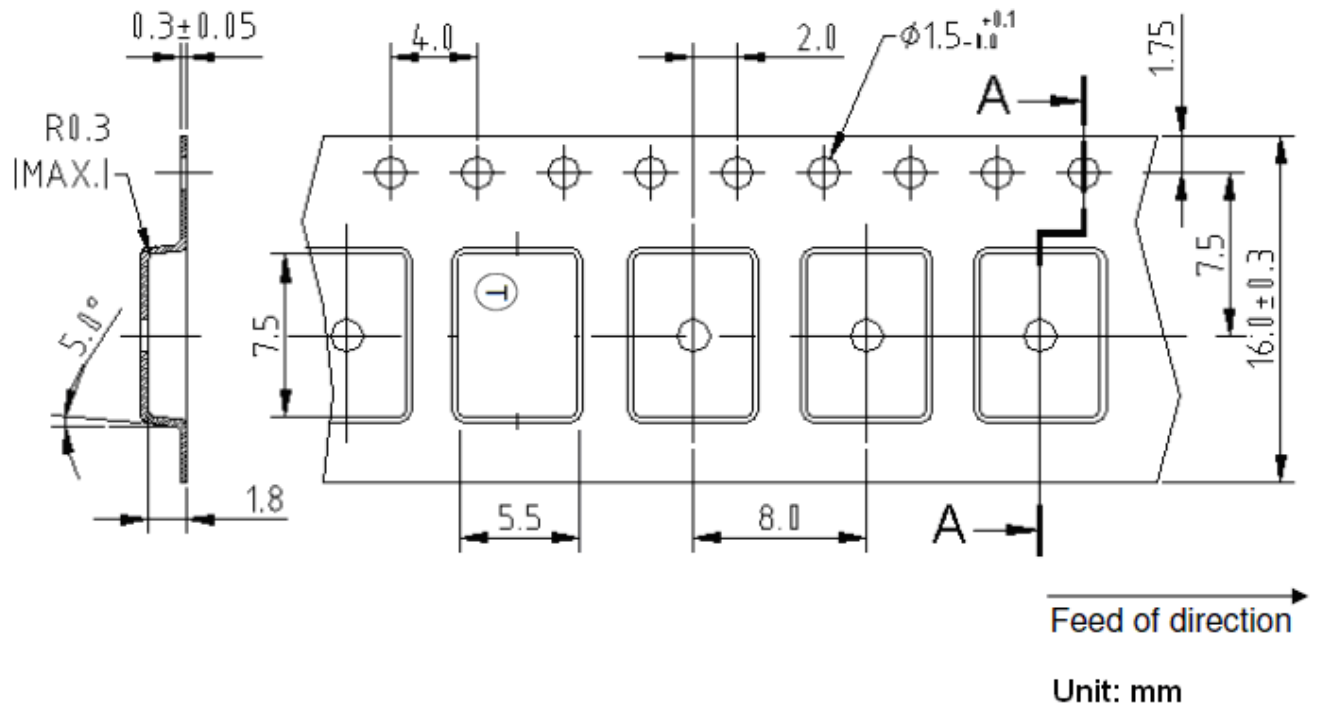


MARKING:



YY = Year WW = Week S = Shift, ## = Sequence Code

TAPE DIMENSION



RECOMMENDED REFLOW PROFILE:

1. Preheating shall be fixed at 150~180°C for 60~90 seconds.
2. Ascending time to preheating temperature 150°C shall be 30 seconds min.
3. Heating shall be fixed at 220°C for 50~80 seconds and at 260°C+0/-5°C peak (20~40sec).
4. Time: 2 times.

