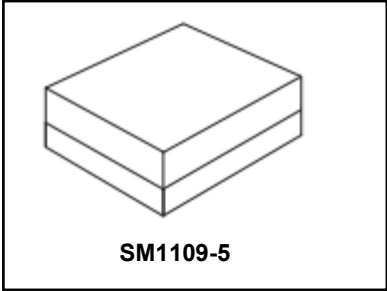


SF2542L

1650 MHz
Bypass SAW Filter



• *Complies with Directive 2002/95/EC (RoHS)*

Absolute Maximum Ratings

Rating
Input Power +15 dBm (2000 h)
D.C. Voltage 3 V @ 25+/-2 °C between terminals
Minimum resistance between terminals 10M ohm
Storage Temperature -40 to +85 °C

Characteristic	-30 to +85 °C	Min.	Typ.	Max.	Unit
Center Frequency					
Insertion Loss (600~1000 MHz)		-	0.1	0.3	dB
Insertion Loss (1000~2200 MHz)		-	0.3	0.4	dB
Insertion Loss (2200~2700 MHz)		-	0.3	0.5	dB
Case Style: 1.1 x 0.9 x 0.5 mm					
Lid Symbolization: <u>b</u>					

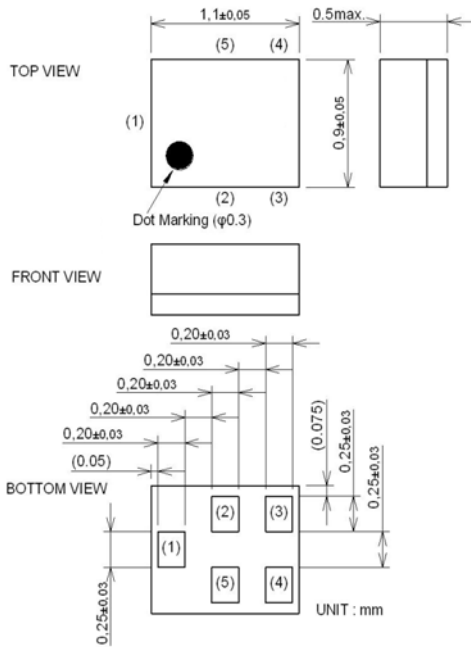
* Typical value at 25 +/- 2 deg. C

 **CAUTION: Electrostatic Sensitive Device. Observe precautions for handling.**

NOTES:

1. The design, manufacturing process, and specifications of this device are subject to change.
2. US or International patents may apply.
3. RoHS compliant from the first date of manufacture.

Dimensions



Marking : Laser Printing

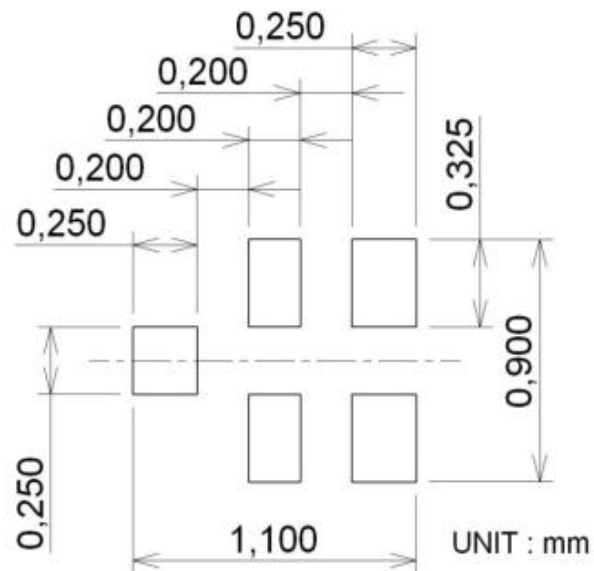
Terminal Number

(1) :Unbalance Port

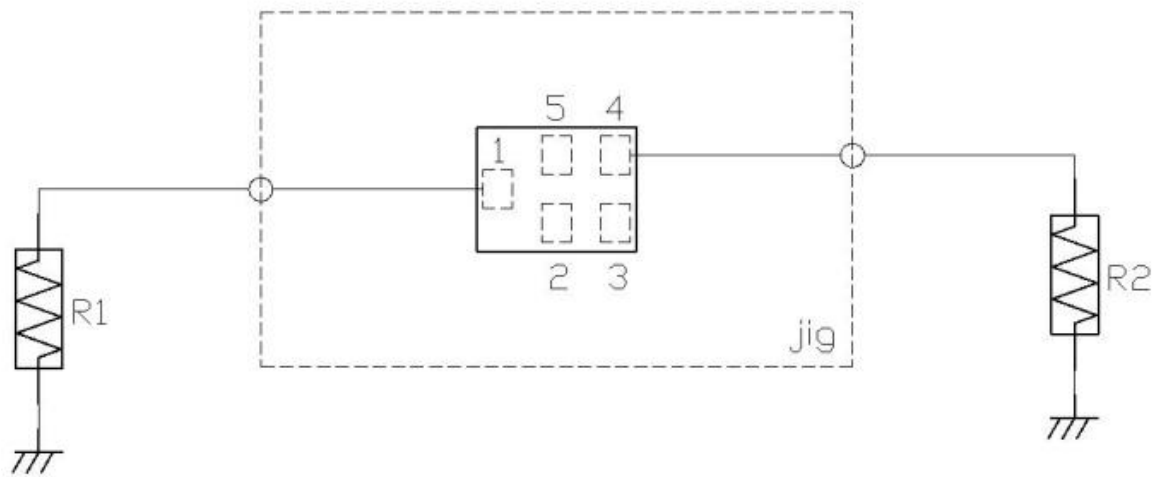
(4) :Unbalance Port

Others : GND.

Land Pattern

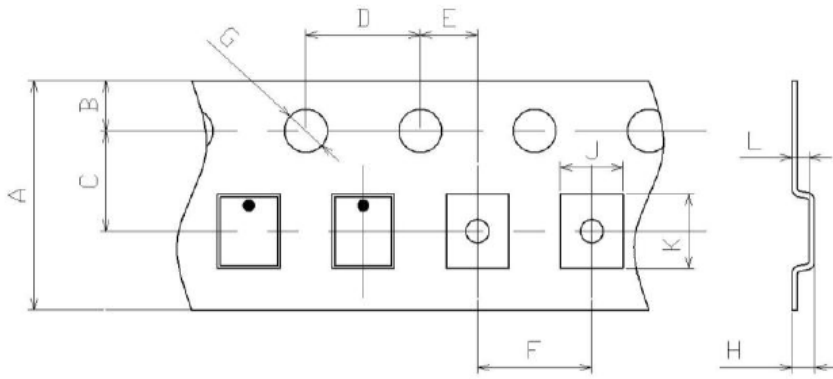


Measurement Circuit (Top View)



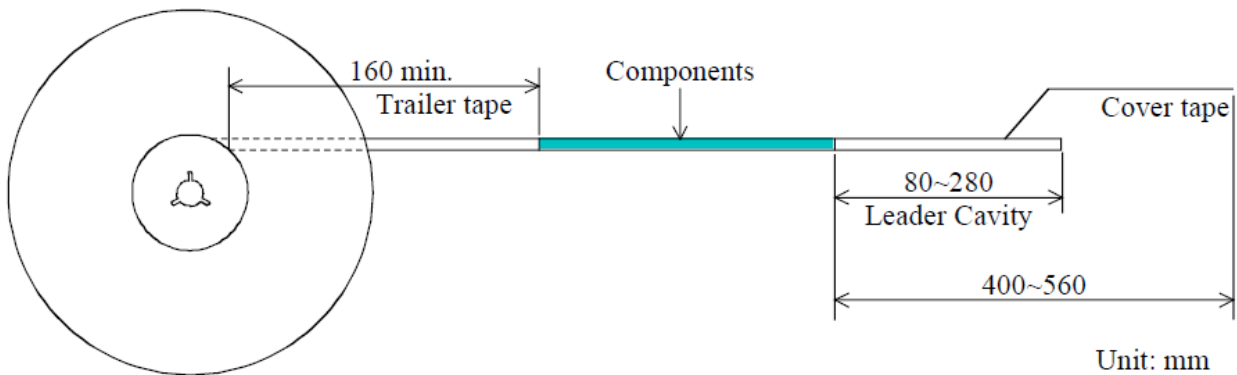
Tape and Reel Dimensions

Carrier Tape



A:	8.0	J:	1.05
B:	1.75	K:	1.25
C:	3.50	L:	0.55
D:	4.0		
E:	2.00		
F:	2.0		
G:	$\phi 1.5$		
H:	0.75		

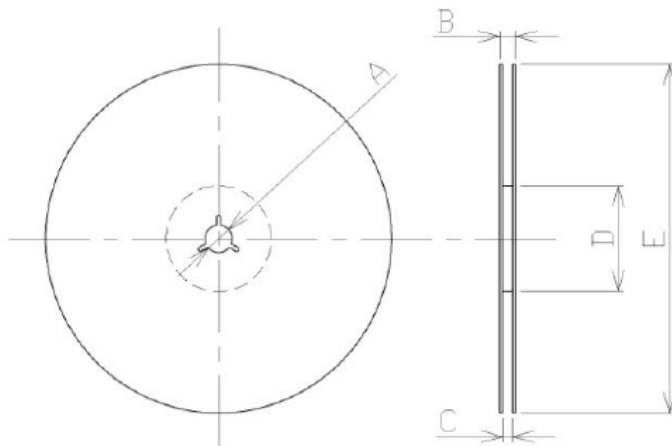
Tape



Reel

7" = 5000

13" = 10,000



	$\phi 178$ Reel	$\phi 330$ Reel
A:	$\phi 13.0$	-
B:	13.5max	-
C:	9.0	-
D:	$\phi 60$	-
E:	$\phi 178$	-

Marking Code

Year/Month Code (Follow the table)

Year/Month	1	2	3	4	5	6	7	8	9	10	11	12
2013	A	B	C	D	E	F	G	H	J	K	L	M
2014	N	P	Q	R	S	T	U	V	W	X	Y	Z
2015	a	b	c	c	e	f	g	h	j	k	l	m
2016	n	p	q	r	s	t	u	v	w	x	y	z
2017	A	B	C	D	E	F	G	H	J	K	L	M
2018	N	P	Q	R	S	T	U	V	W	X	Y	Z
2019	a	b	c	d	e	f	g	h	j	k	l	m
2020	n	p	q	r	s	t	u	v	w	x	y	z

Recommended Reflow Profile

1. Preheating shall be fixed at 150~180°C for 60~90 seconds.
2. Ascending time to preheating temperature 150°C shall be 30 seconds min.
3. Heating shall be fixed at 220°C for 50~80 seconds and at 260°C +0/-5°C peak (10 seconds).
4. Time: 5 times maximum.

