

SF2575L

**2605 MHz
SAW Filter**



SM1109

MAXIMUM RATING

- Input Power Level: 10 dBm
- DC Voltage: 0V
- Operating Temperature: -20°C to +85°C
- Storage Temperature: -40°C to +85°C
- Moisture Sensitivity Level: Level 3 (MSL3)
- ESD 50V(MM) 100V(HBM)

ELECTRICAL CHARACTERISTICS

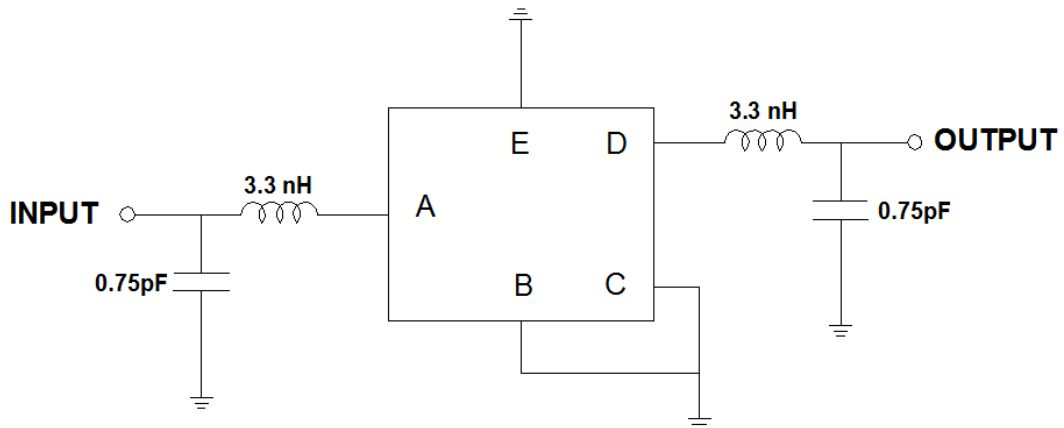
Parameters Description	Unit	Min.	Typ.	Max.
Center Frequency (Fo)	MHz	-	2605	-
Insertion Loss within 2555.0 ~ 2575.0 MHz	dB	-	3.6	3.8
2575.0 ~ 2635.0 MHz	dB	-	1.7	2.6
2635.0 ~ 2655.0 MHz	dB	-	3.2	3.5
Amplitude Ripple within 2550.0 ~ 2655.0 MHz	dBp-p	-	1.9	2.5
Attenuation:				
10.0 ~ 960.0 MHz	dB	32	38	-
1225.0 ~ 1559.0 MHz	dB	30	35	-
1559.0 ~ 1606.0 MHz	dB	30	35	-
1606.0 ~ 1710.0 MHz	dB	28	34	-
1710.0 ~ 2170.0 MHz	dB	28	35	-
2170.0 ~ 2400.0 MHz	dB	28	34	-
2401.0 ~ 2438.0 MHz	dB	35	38	-
2421.0 ~ 2483.0 MHz	dB	35	45	-
2750.0 ~ 4900.0 MHz	dB	27	38	-
4900.0 ~ 6000.0 MHz	dB	40	45	-
6000.0 ~ 8000.0 MHz	dB	40	45	-
VSWR within 2555.0~2655.0 MHz	-	-	1.5	2.2

CAUTION: Electrostatic Sensitive Device. Observe precautions for handling.



1. The design, manufacturing process, and specifications of this device are subject to change.
2. US or International patents may apply.
3. RoHS compliant from the first date of manufacture.

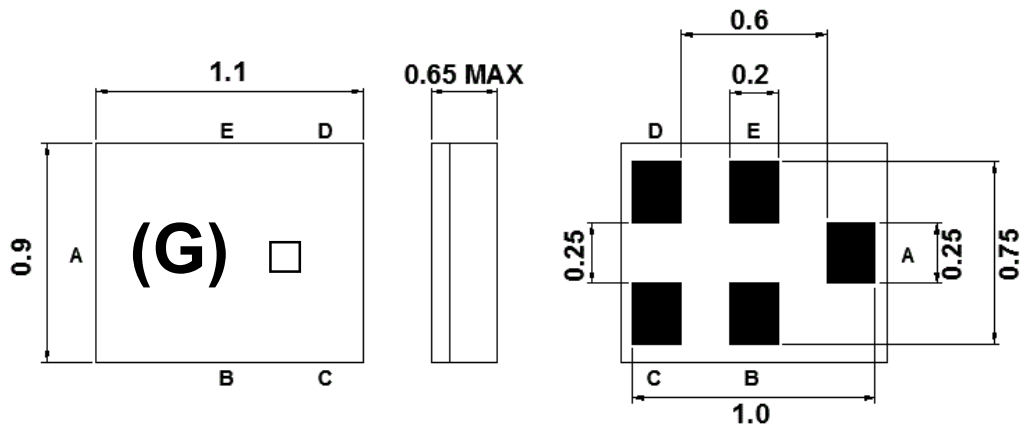
MEASUREMENT CIRCUIT



Pin Description

B, C, E	Ground
A	Input
D	Output

OUTLINE DRAWING



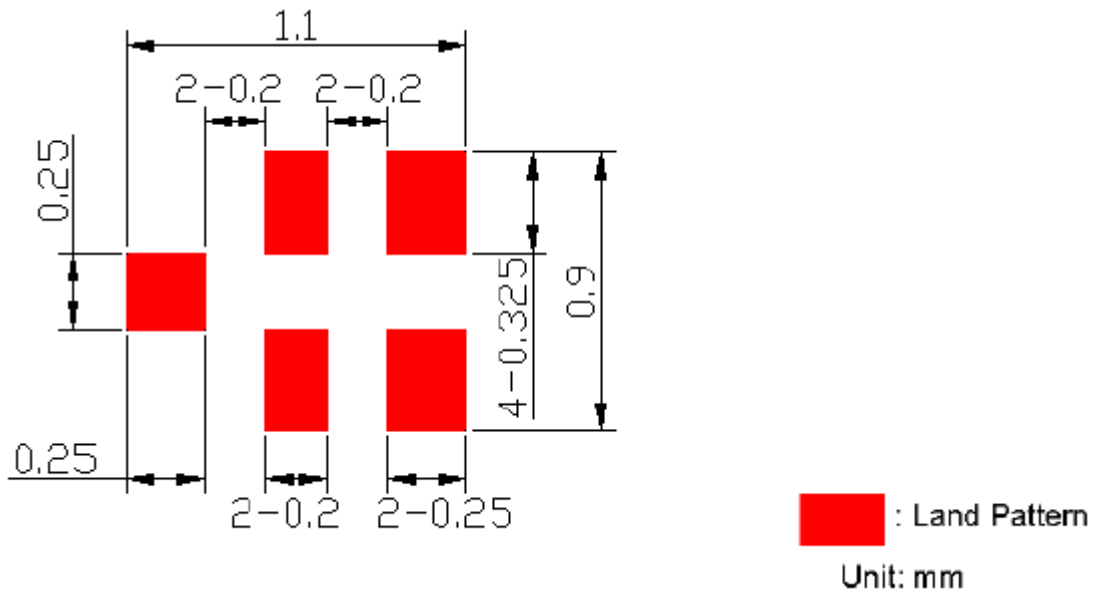
(G): Series Number

□: Date Code(Year+Month)

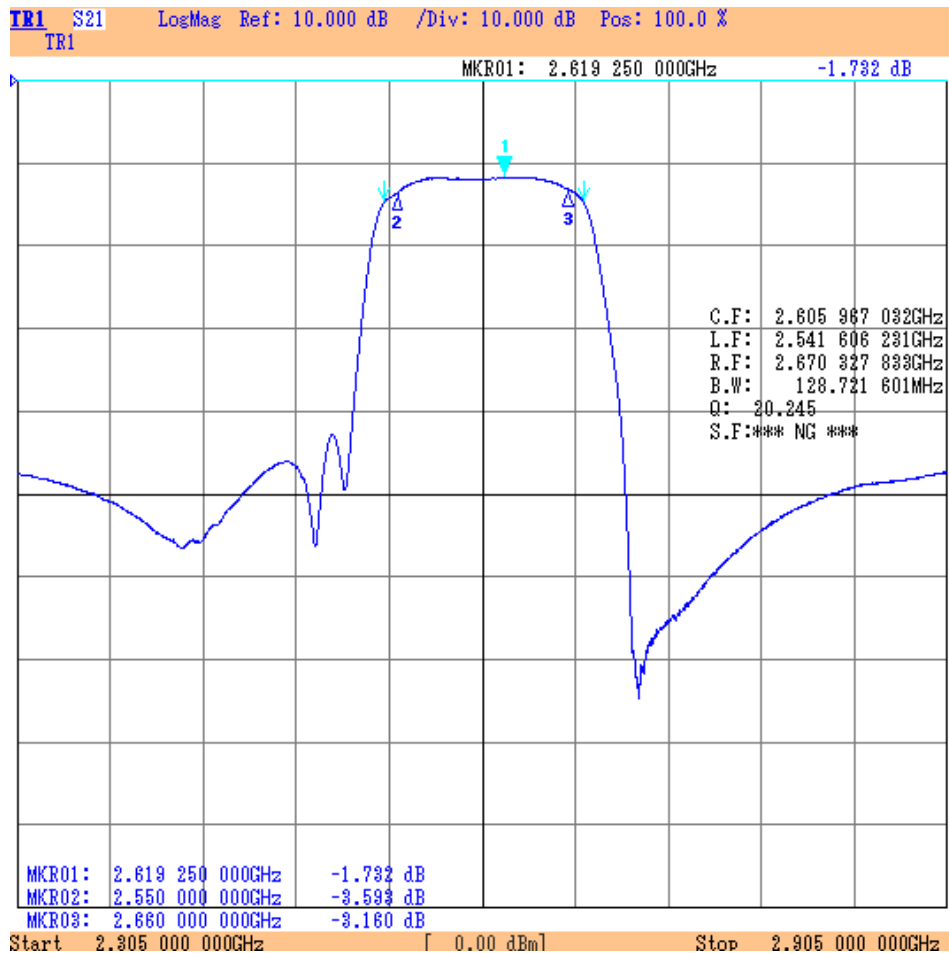
Date Code Table:

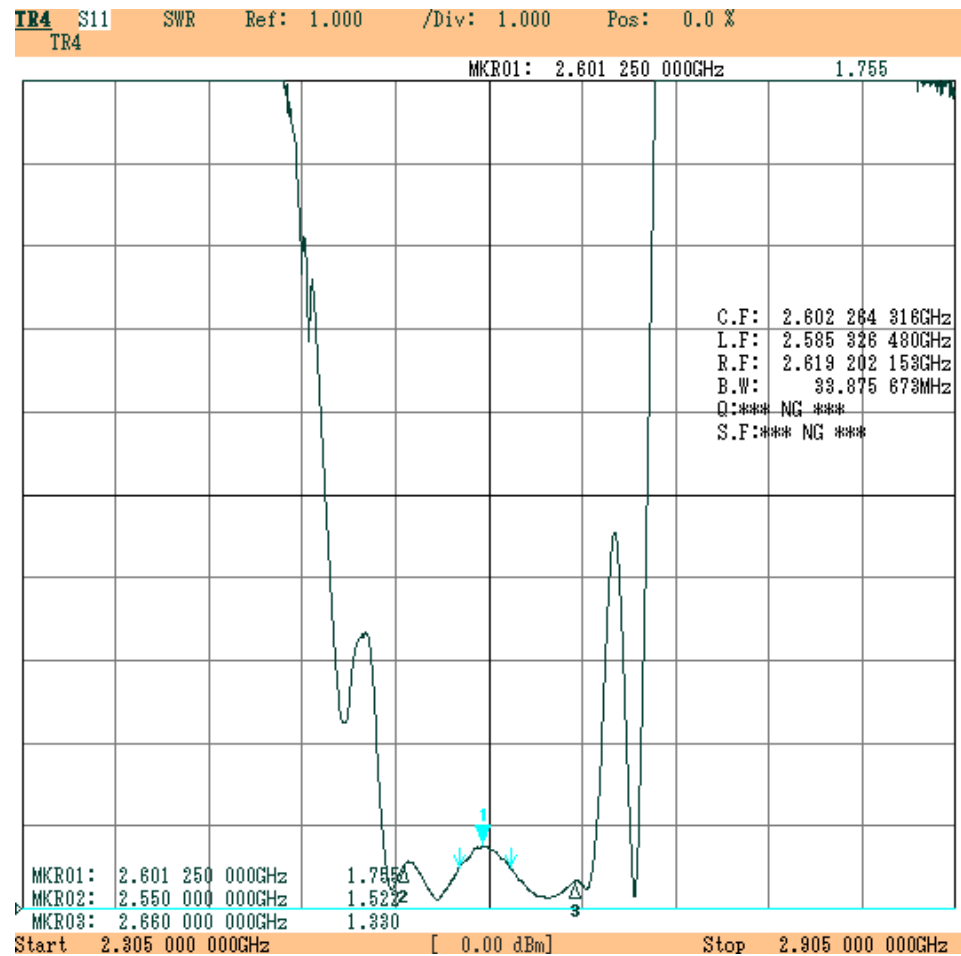
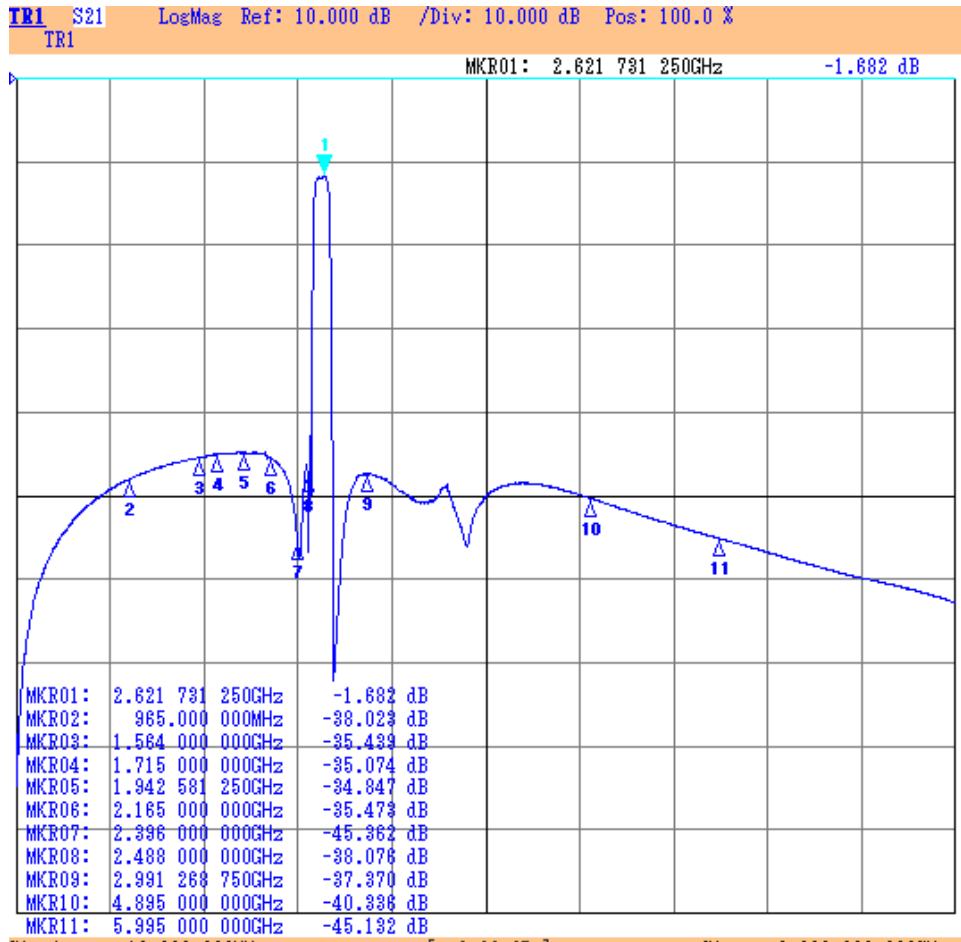
	Jan.	Feb.	Mar.	Apr.	May	Jun.	July	Aug.	Sep.	Oct.	Nov.	Dec.
2015	a	b	c	d	e	f	g	h	j	k	l	m
2016	n	p	q	r	s	t	u	v	w	x	y	z
2017	<u>A</u>	<u>B</u>	<u>C</u>	<u>D</u>	<u>E</u>	<u>F</u>	<u>G</u>	<u>H</u>	<u>J</u>	<u>K</u>	<u>L</u>	<u>M</u>
2018	<u>N</u>	<u>P</u>	<u>Q</u>	<u>R</u>	<u>S</u>	<u>T</u>	<u>U</u>	<u>V</u>	<u>W</u>	<u>X</u>	<u>Y</u>	<u>Z</u>

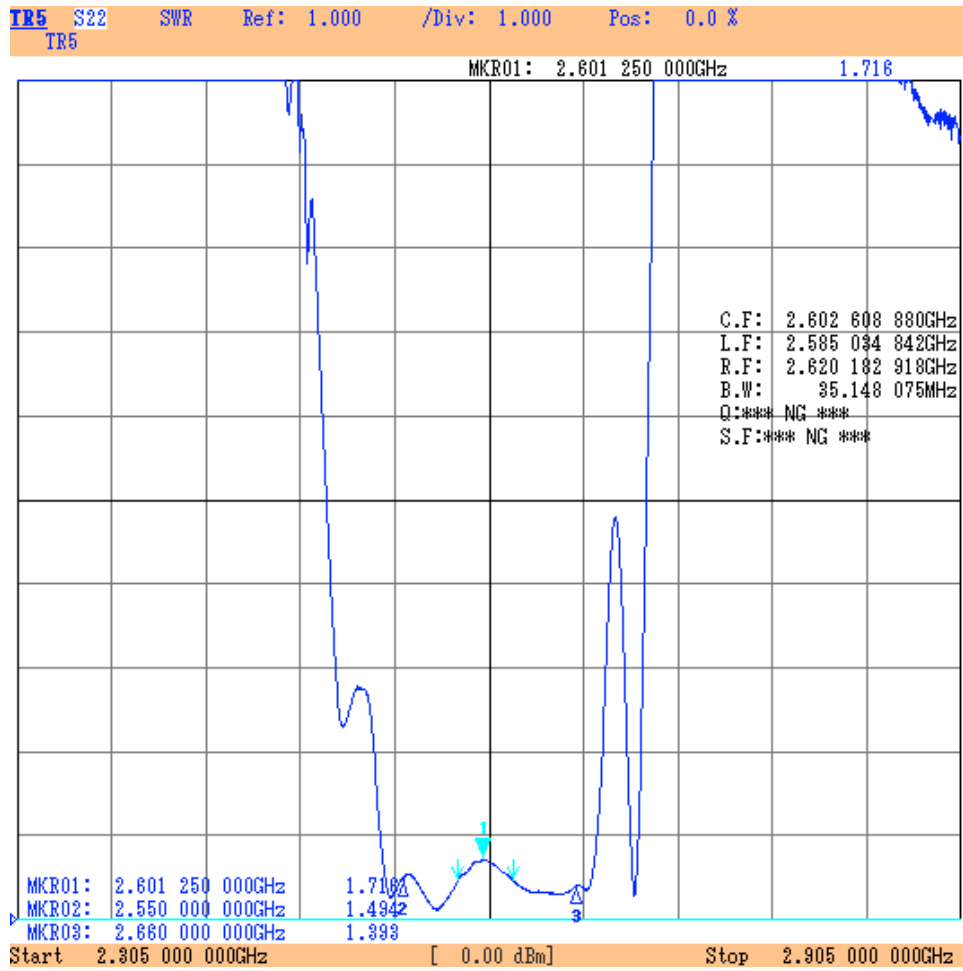
PCB Footprint



Frequency Characteristics







**PACKING
 REEL DIMENSION**

Reel Count
 7" = 3000
 13" = 10,000

