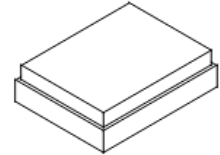


SF2583NA

**1880/1960 MHz
Filter Duplexer**



SM1814

MAXIMUM RATING:

- Operating temperature range: -40 °C to +85 °C
- Storage temperature range: -50 °C to +125 °C
- Input power : 29dBm (Ta=+50degC,50kh,CW)
- Maximum DC Voltage: +/-3 V
- Moisture Sensivity Level: Level 1 (MSL 1)
- ESD 50V(MM) 100V(HBM)
- AEC-Q200 Qualified

ELECTRICAL CHARACTERISTICS:

Terminating impedance (Tx Port): 50 Ω (Single-ended)

Terminating impedance (Rx Port): 50 Ω (Single-ended)

Terminating impedance (Ant Port): 50//3.9nH Ω (Single-ended)

Tx to ANT (f_{T0}=1880 MHz)

Parameters Description		Unit	Min	Typ	Max	Remarks
Insertion Loss	1850.48~1909.52MHz	dB(*1)	-	1.9	3.0	-20 to+85 °C
	1852.4~1907.6MHz(*2)	dB(*1)	-	1.7	2.7	-20 to+85 °C
	1851.25~1908.75MHz(*3)	dB(*1)	-	1.8	2.9	
Amplitude ripple	1850.48~1909.52MHz	dB	-	1.5	2.2	
VSWR	ANT	-	-	1.6	2.0	
	Tx	1850.48~1909.52MHz	-	-	1.6	2.1
Attenuation:						
1570~1580 MHz		dB	35	38	-	
1930.48~1989.52 MHz		dB	42	51	-	-20 to+85 °C
1931.25~1988.75 MHz(*3)		dB	41	51	-	
3700~3820 MHz		dB	20	34	-	
5550~5730 MHz		dB	15	27	-	



CAUTION: Electrostatic Sensitive Device. Observe precautions for handling.

NOTES:

1. The design, manufacturing process, and specifications of this device are subject to change.
2. US or International patents may apply.
3. RoHS compliant from the first date of manufacture.

ANT to Rx (f_{T0}=1960 MHz)

Parameters Description		Unit	Min	Typ	Max	Remarks
Insertion Loss	1930.48~1989.52MHz	dB(*1)		2.5	3.3	-20 to+85 °C
	1932.4~1987.6MHz(*2)	dB(*1)		2.2	3.0	-20 to+85 °C
	1931.25~1988.75MHz(*3)	dB(*1)		2.3	3.2	
Amplitude ripple	1930.48~1989.52MHz	dB		1.5	2.3	
VSWR	ANT	1930.48~1989.52MHz		1.6	2.1	
	Rx			1.9	2.2	
Attenuation:						
1850.48~1909.52MHz		dB	42	53	-	-20 to+85 °C
1851.25~1908.75MHz(*3)		dB	43	53	-	

Tx to Rx

Isolation	1850.48~1909.52 MHz	dB	51	54	-	-20 to+85 °C
	1851.25~1908.75 MHz(*3)	dB	51	54	-	
	1930.48~1989.52 MHz	dB	48	54	-	-20 to+25 °C
		dB	51	54	-	+25 to+85 °C
	1932.4~1987.6 MHz(*2)	dB	50	54	-	-20 to+25 °C
		dB	51	54	-	+25 to+85 °C
	1931.25~1988.75 MHz(*3)	dB	47	54	-	-30 to+25 °C
		dB	51	54	-	+25 to+85 °C

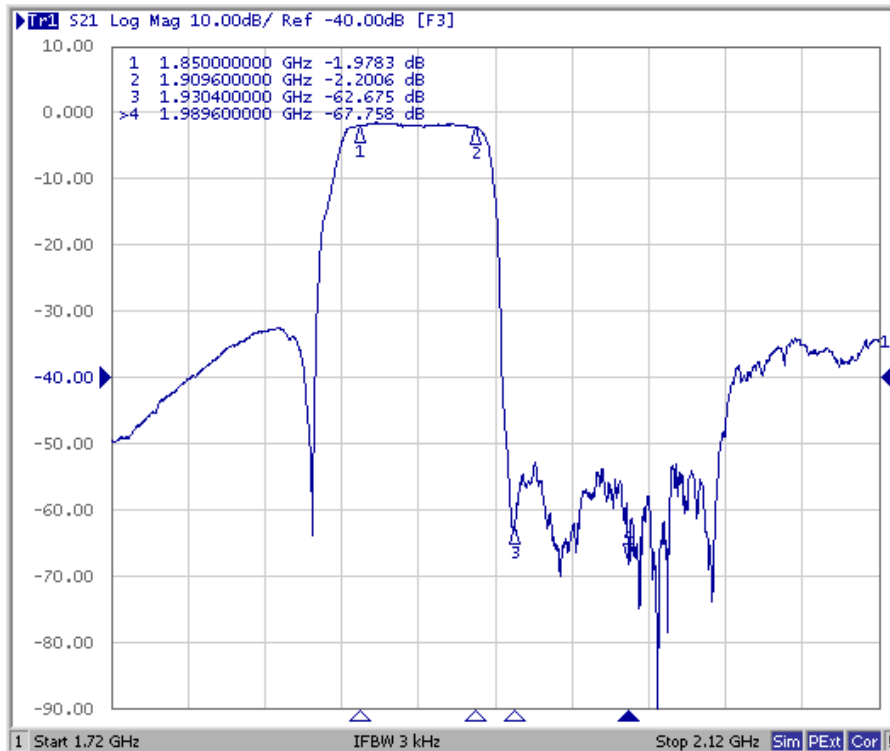
(*1) Specification of insertion loss excludes loss that comes from the test board.

(*2) The integrated loss over any 3.84MHz(+/- 1.92MHz) channel within the band.

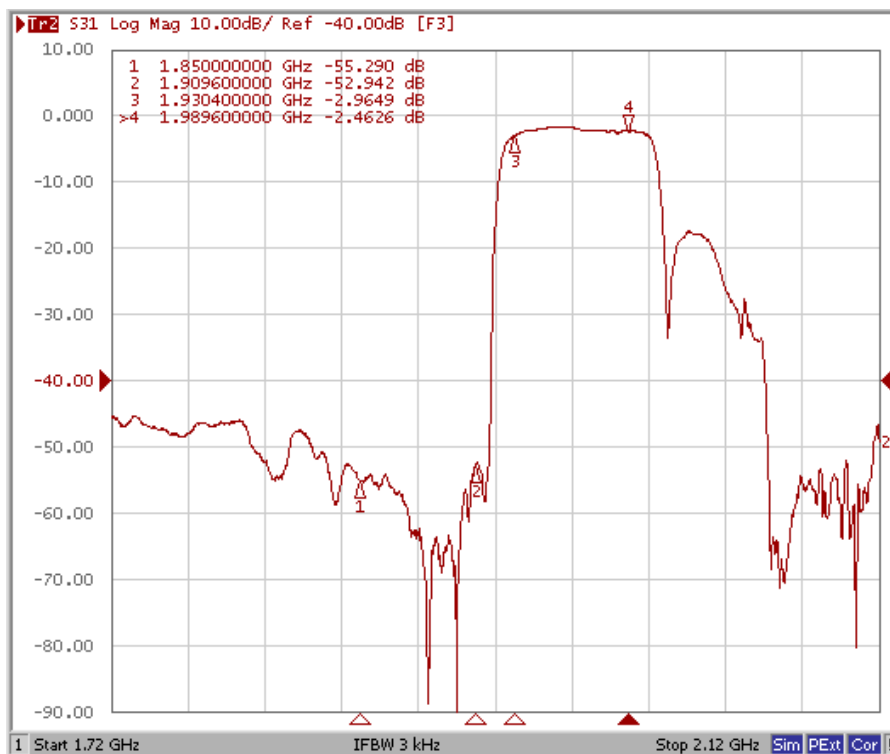
(*3) The integrated loss over any 1.25MHz(+/- 0.625MHz) channel within the band.

FREQUENCY CHARACTERISTICS:

Tx to Ant

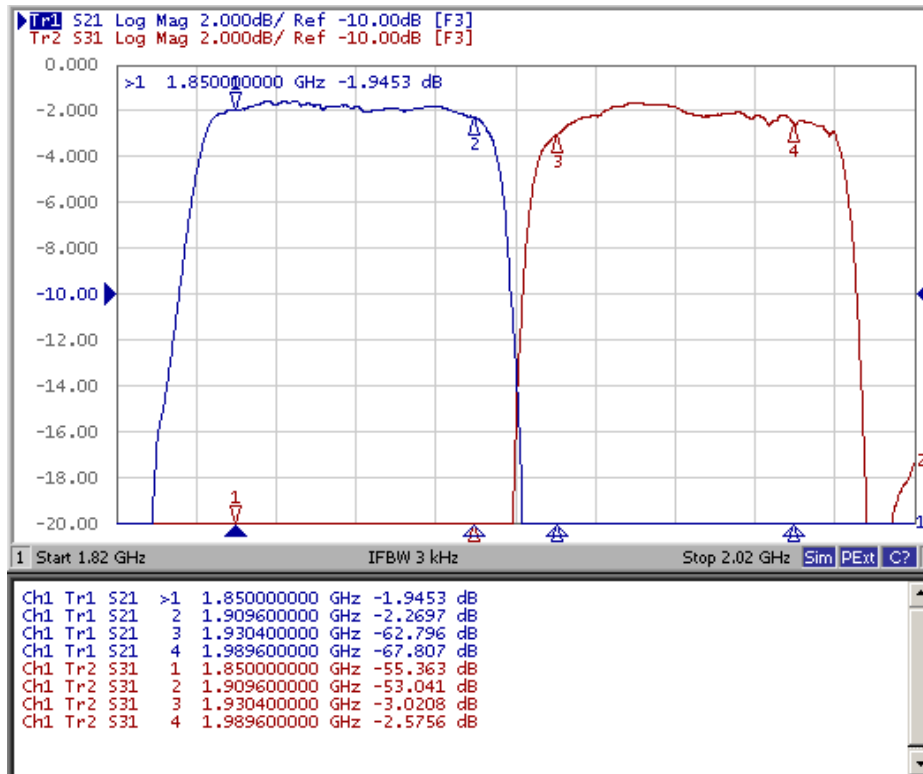


Ant to Rx

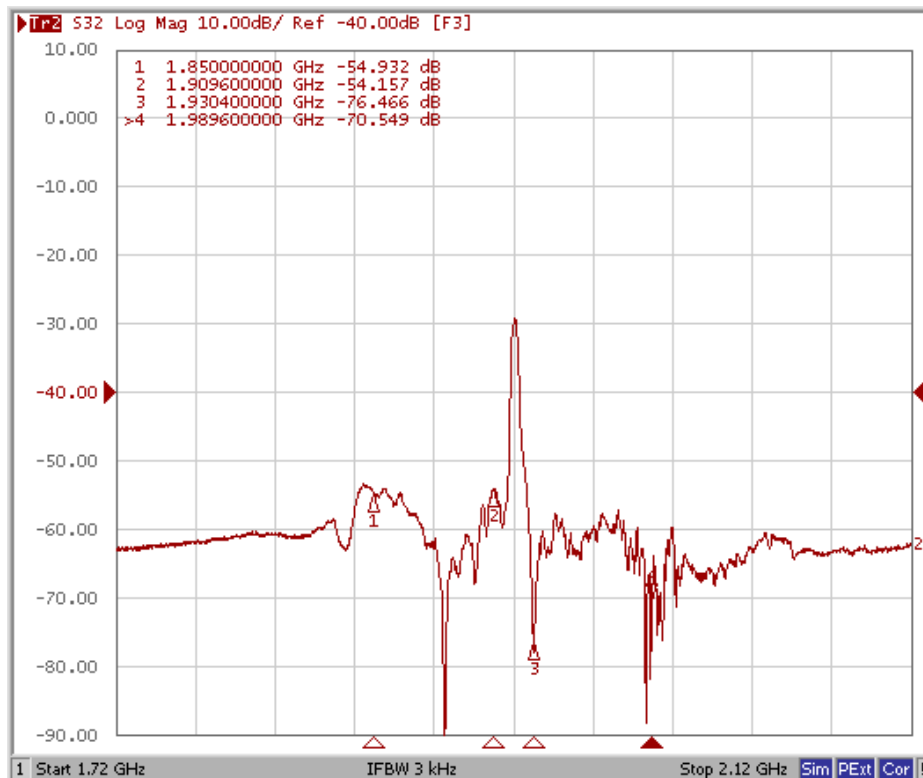


These data exclude loss that comes from the test board.

Tx to Ant ,Ant to Rx

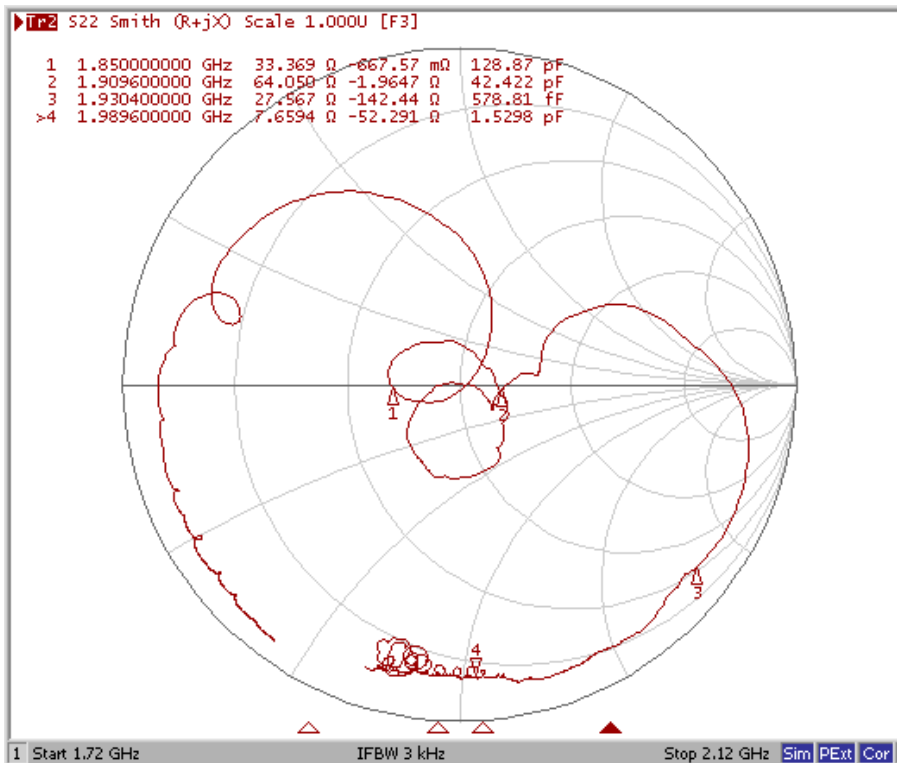
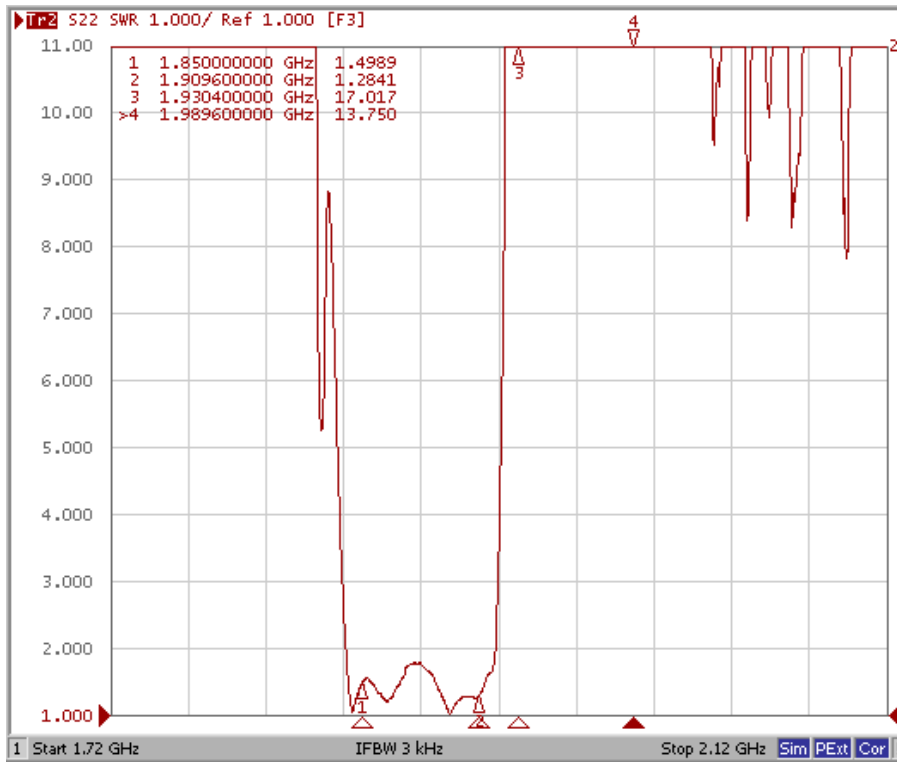


Tx to Rx Isolation

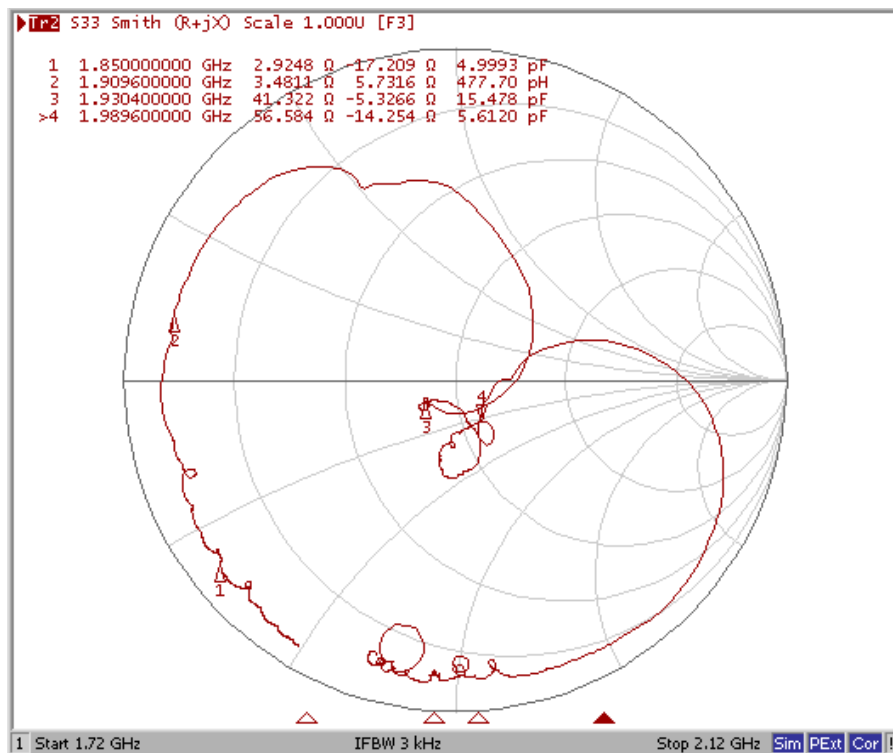
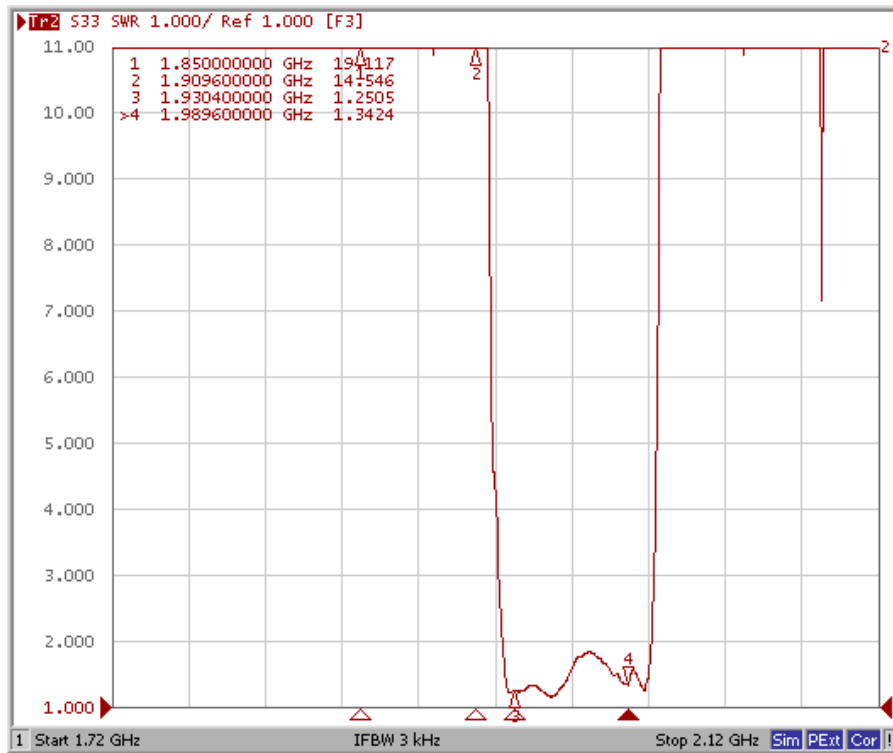


These data exclude loss that comes from the test board

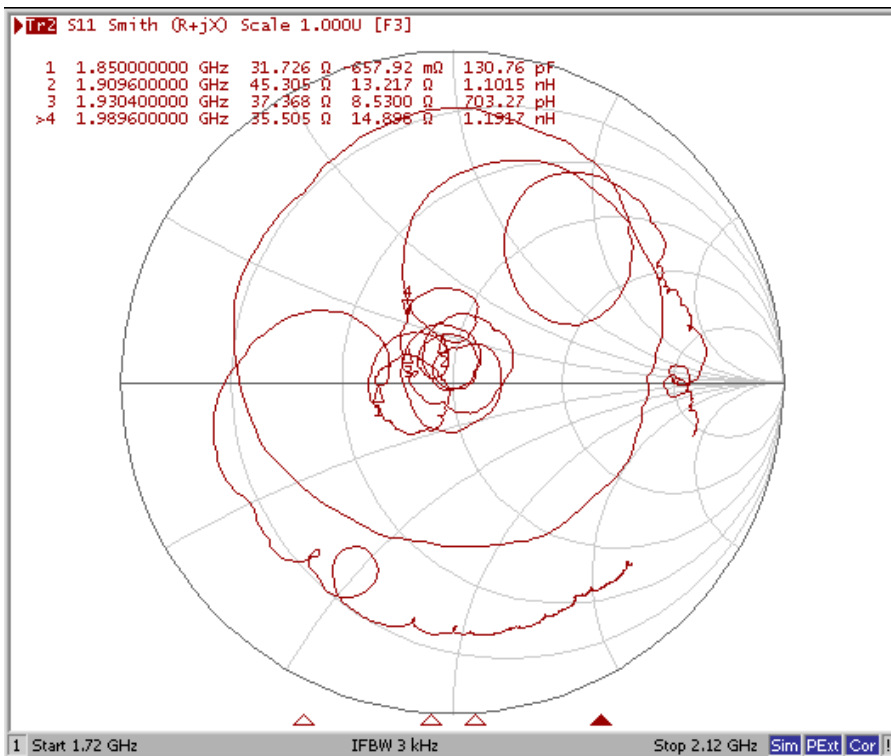
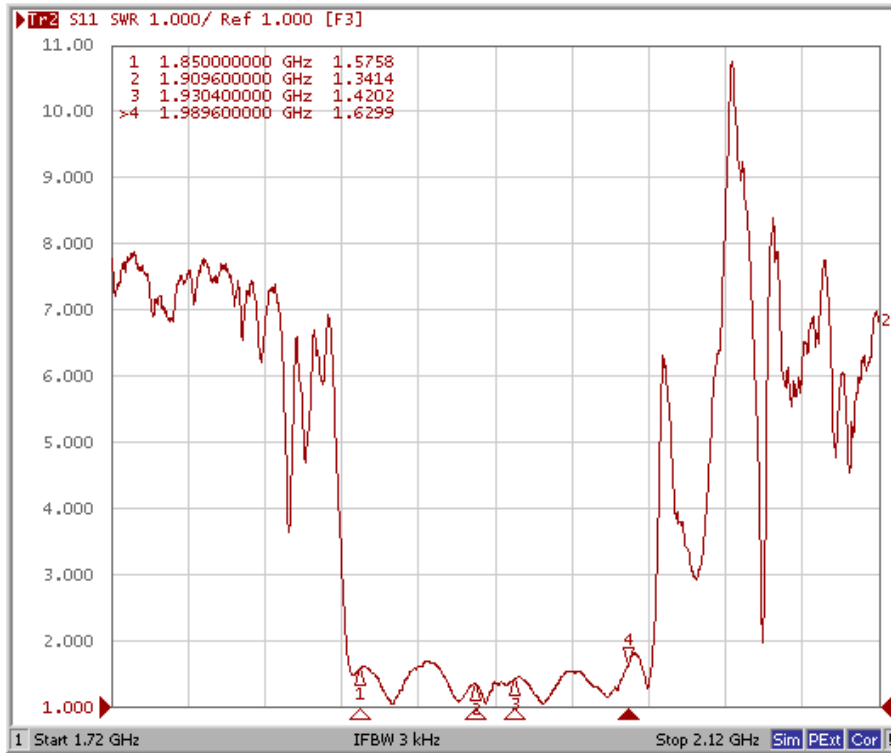
Tx Port



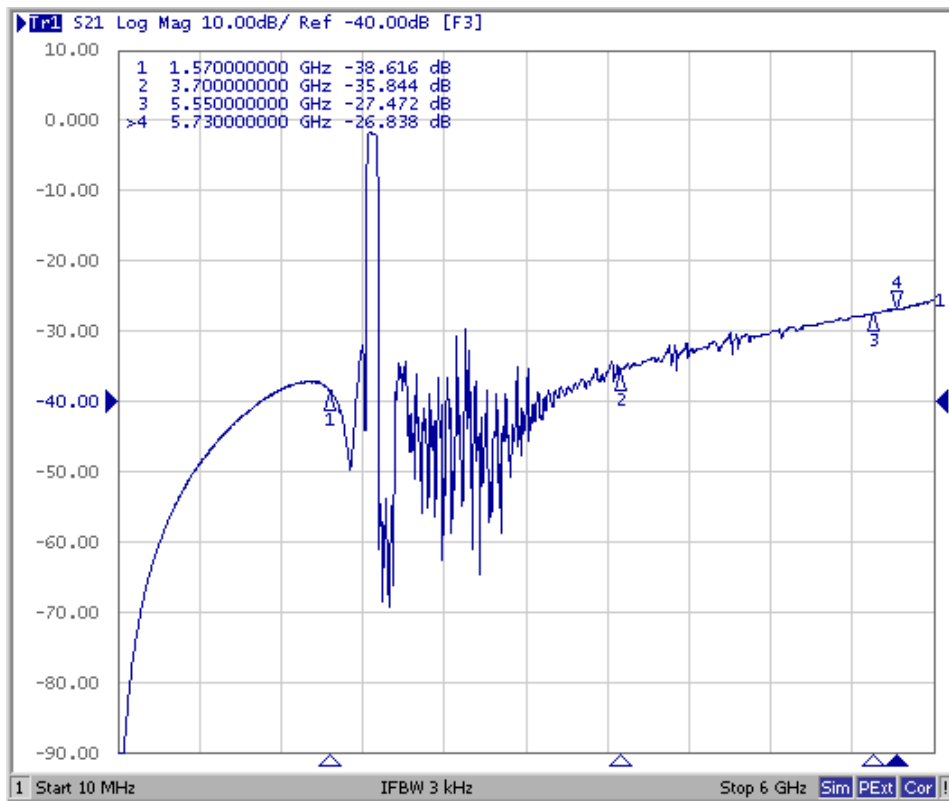
Rx Port



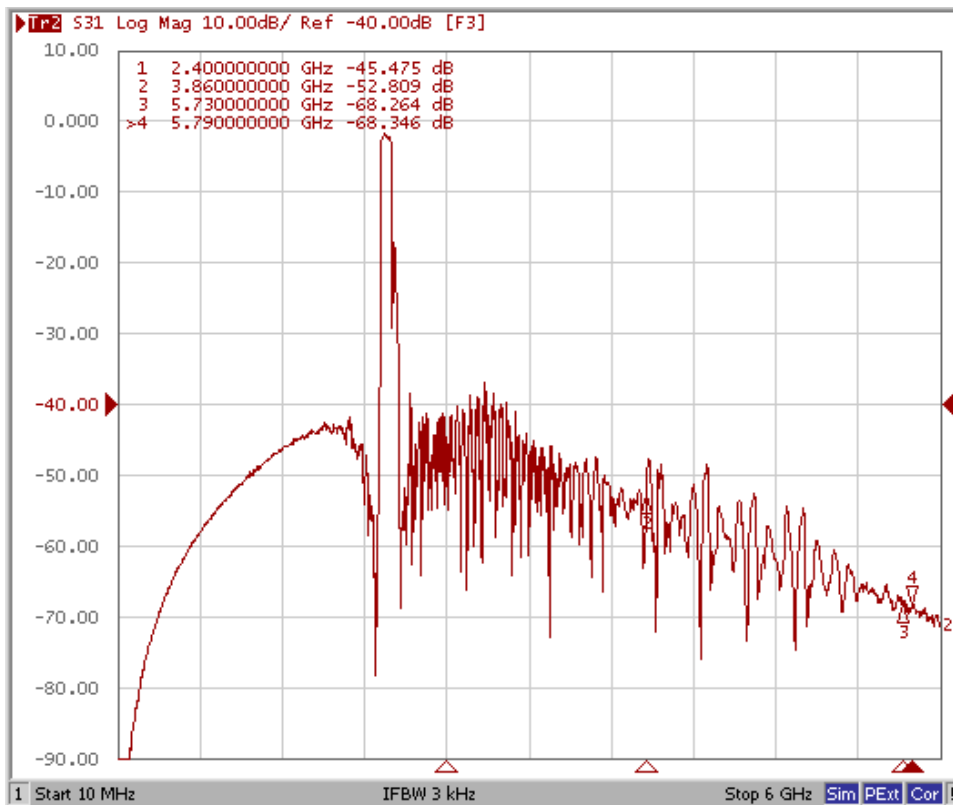
Ant Port



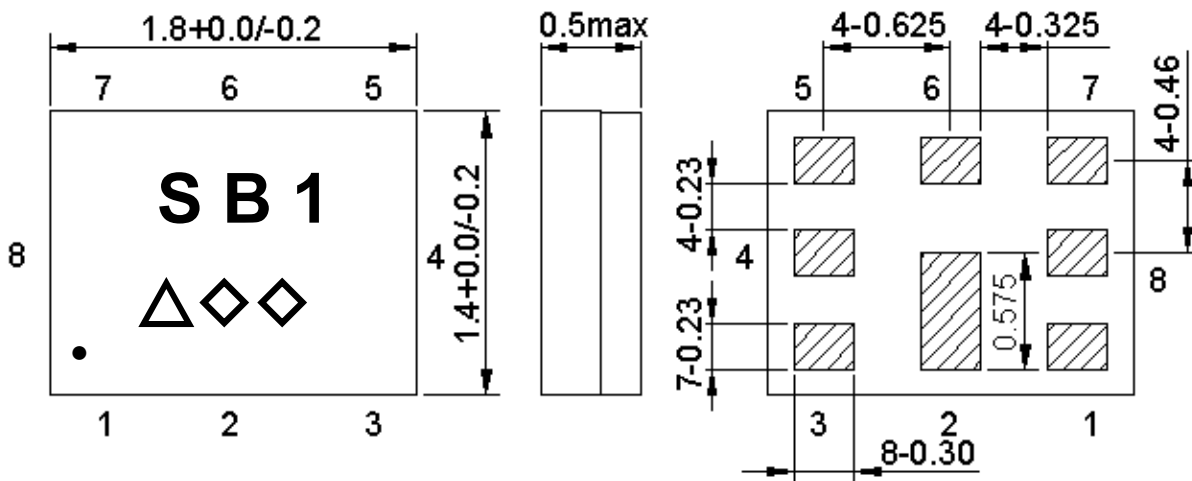
Tx to Ant (Wide span)



Ant to Rx (Wide span)



OUTLINE DRAWING:



Marking name : SB1

△: Date code(2016 May → s ,....., 2019 Dec→m.)

◇◇: Lot Code.

Product Date Code. Follow below table.

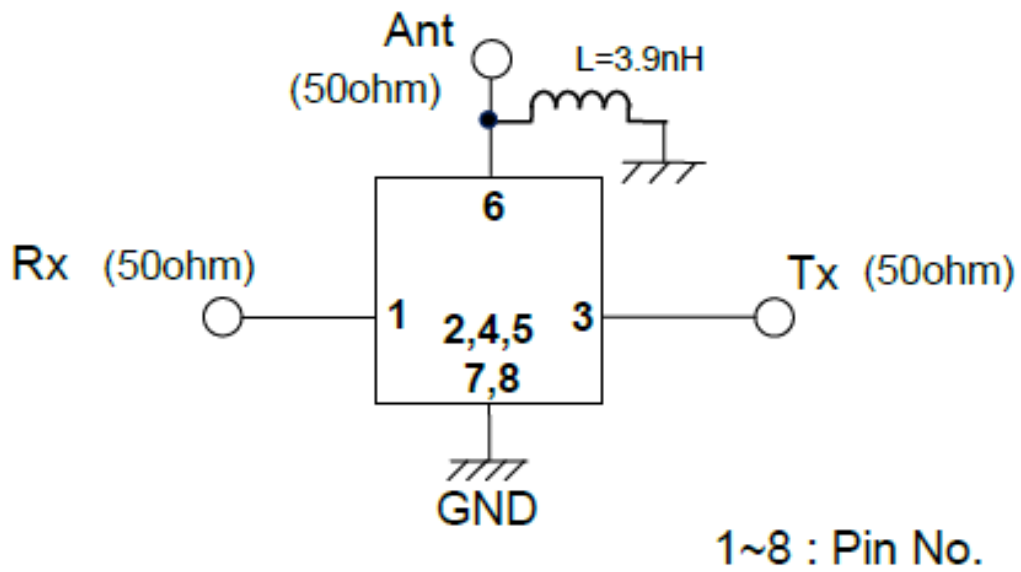
Year	Jan	Feb	Mar	Apr	May	Jun	Jul	Aug	Sep	Oct	Nov	Dec
2016	n	p	q	r	s	t	u	v	w	x	y	z
2017	A	B	C	D	E	F	G	H	J	K	L	M
2018	N	P	Q	R	S	T	U	V	W	X	Y	Z
2019	a	b	c	d	e	f	g	h	j	k	l	m
2020	n	p	q	r	s	t	u	v	w	x	y	z
2021	A	B	C	D	E	F	G	H	J	K	L	M

Pin Configuration

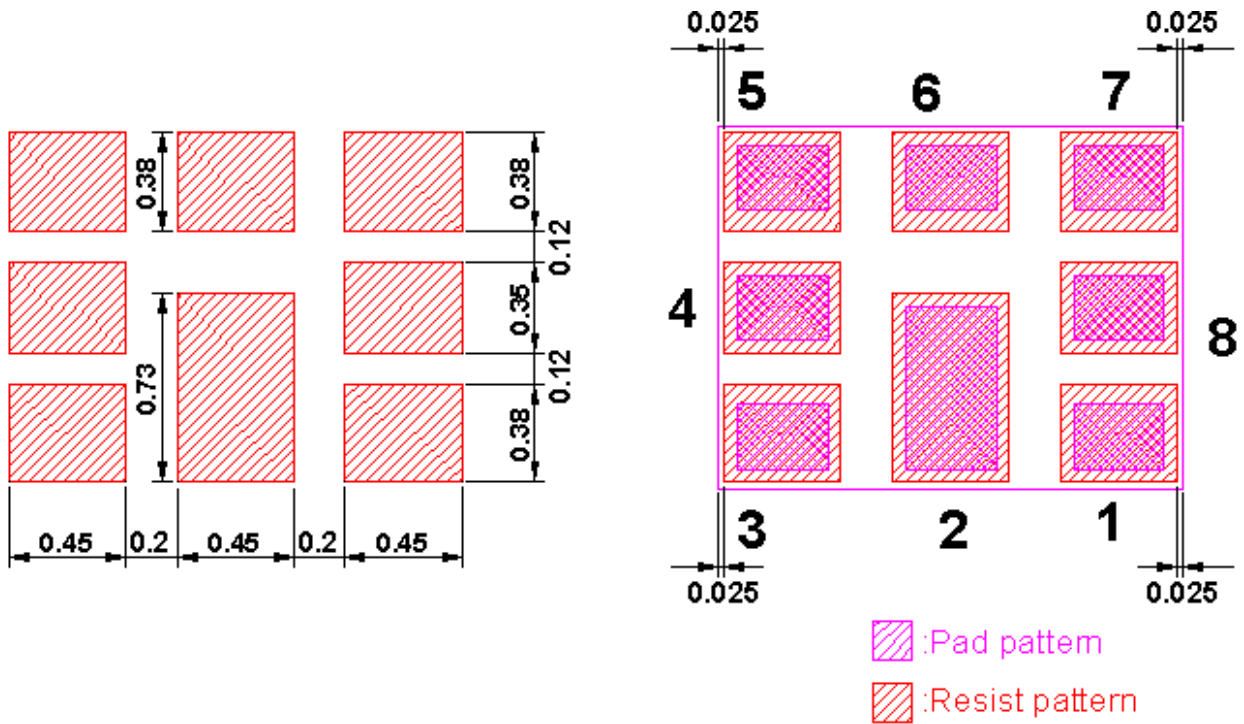
Pin No.	Pin name	Description
1	Rx	Receiver Pin
2	GND	Ground Pin
3	Tx	Transmitter Pin
4	GND	Ground Pin
5	GND	Ground Pin
6	ANT	Antenna Pin
7	GND	Ground Pin
8	GND	Ground Pin

Figure 1. Dimensions and Pin assignment

Evaluation Circuit



FOOTPRINT:



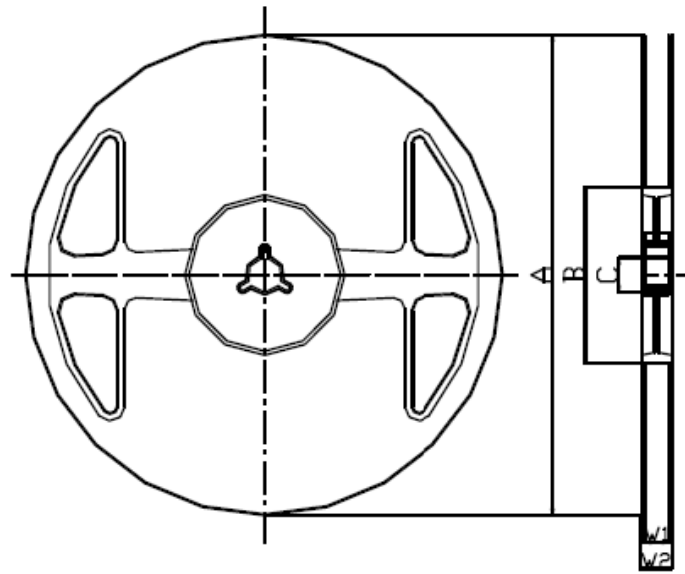
PACKING:

REEL DIMENSION

Reel Count:

7" = 3000

13" = 10,000



Materials of Reel

Material : Polystyrene + Carbon

Characteristics : Conforms to EIAJ-ET-7200A

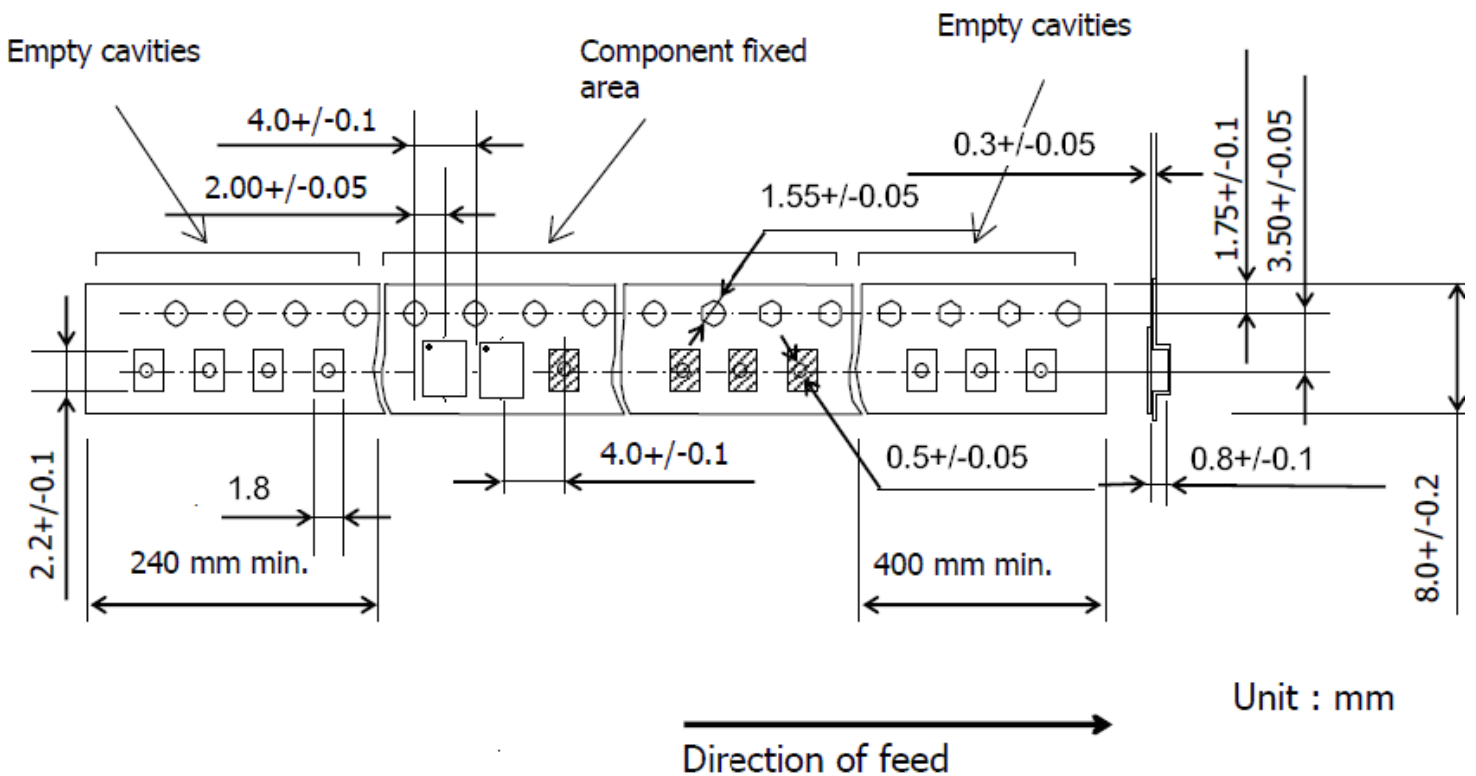
Color : Black

Surface resistance (reference value) : $10^9\Omega/\text{sq}$ Max.

Unit : mm

Code	Quantity	A	B	C	W1	W2
Z	3,000 pcs	ϕ 180.0 +0.0/-1.5	ϕ 66.0 +/-0.5	ϕ 13.0 +/-0.2	9.0 +1.0/-0.0	11.4 +/-1.0

TAPE DIMENSION



Unit : mm

RECOMMENDED REFLOW PROFILE :

1. Preheating shall be fixed at 150~180°C for 60~90 seconds.
2. Ascending time to preheating temperature 150°C shall be 30 seconds min.
3. Heating shall be fixed at 220°C for 50~80 seconds and at 245~260°C peak (min. 10sec).
4. Time : 2 times.

