

SM3030-8

MAXIMUM RATING:

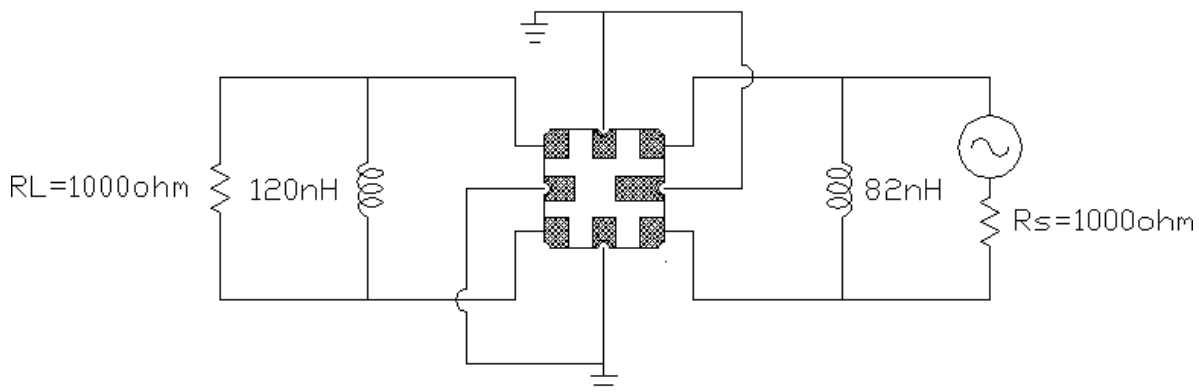
- Operating Temperature: -10 °C ~ +80 °C
- Storage Temperature: -40 °C ~ +85 °C
- Input Power Level: 10dBm
- Moisture Sensitivity Level: 1

Characteristics :

- Ambient Temperature: 25 °

Characteristics	Value			Note.
	Min.		Max.	
Center frequency F_c MHz	-	190	-	-
Maximum Insertion loss I.L. dB	-	5.3	7.0	-
3dB Bandwidth MHz	4.60	6.80	-	-
Passband Ripple ($F_c \pm 2\text{MHz}$) MHz	-	0.60	2.00	-
Group Delay Ripple ($F_c \pm 2\text{MHz}$) nS	-	30	100	-
Attenuation:(Reference level from Max.IL)				
From $F_c \pm 5\text{MHz}$ to $F_c \pm 7.5\text{MHz}$ dB	10	15	-	-
From $F_c \pm 7.5\text{MHz}$ to $F_c \pm 12.5\text{MHz}$ dB	25	35	-	-
From $F_c \pm 12.5\text{MHz}$ to $F_c \pm 100\text{MHz}$ dB	36	40	-	-
Temp Coefficient ppm/° C	-	-18	-	-

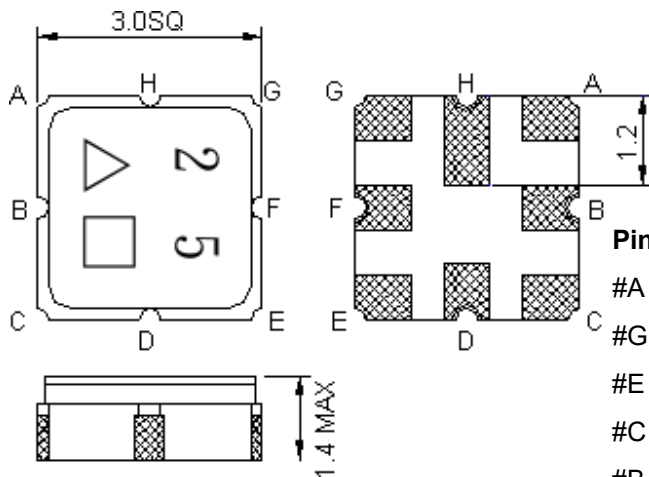
TEST FIXTURE :



 **CAUTION: Electrostatic Sensitive Device. Observe precautions for handling.**
NOTES:

1. The design, manufacturing process, and specifications of this device are subject to change.
2. US or International patents may apply.
3. RoHS compliant from the first date of manufacture.

OUTLINE DRAWING:



Pin configuration

- #A RF Balanced input
- #G RF Balanced Input ground
- #E RF Balanced Output
- #C RF Balanced Output ground
- #B,D,E,F,H To be ground

Unit : mm

△ : Year Code (2007→7, ..., 2009→9)

□ : Date Code (Follow the table from planner each year)

Frequency Characteristics :

1. S21 Response

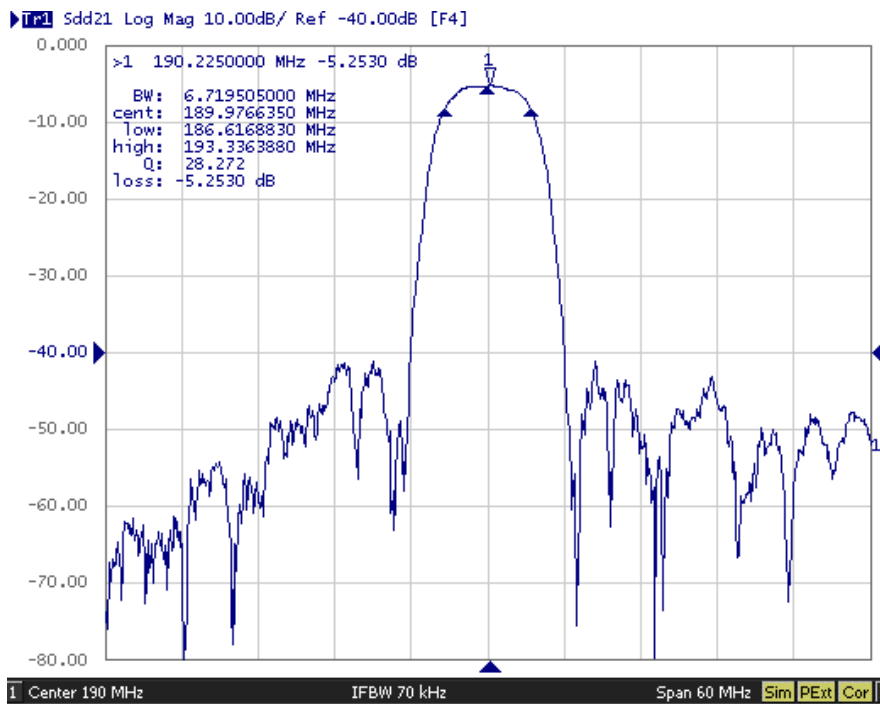


Fig1. Horizontal: 6MHz/Div Vertical: 10dB/Div

2. Pass band Ripple and Group Delay Ripple

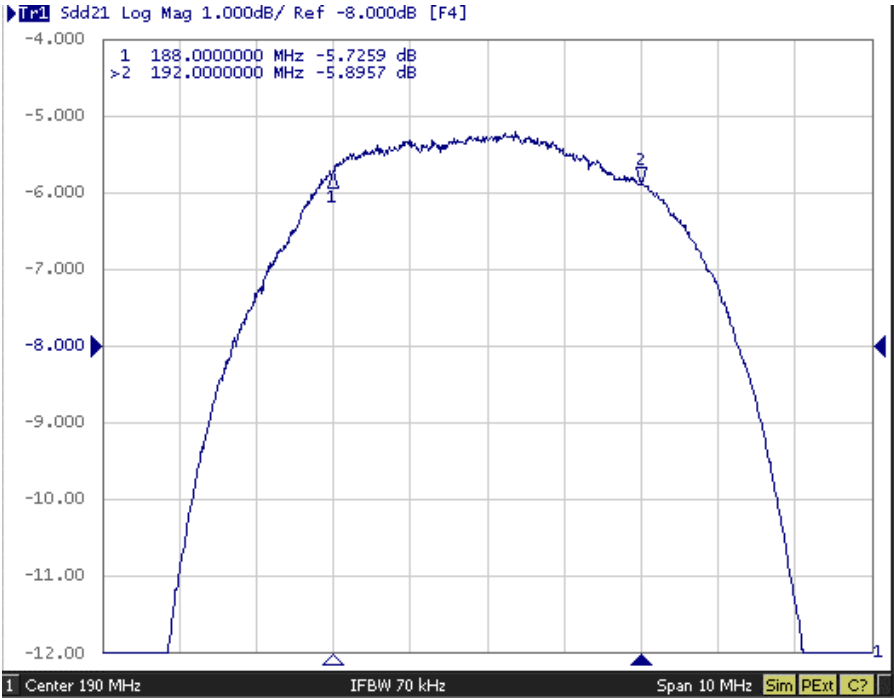


Fig2. Horizontal: 1MHz/Div; Vertical: 1dB/Div,

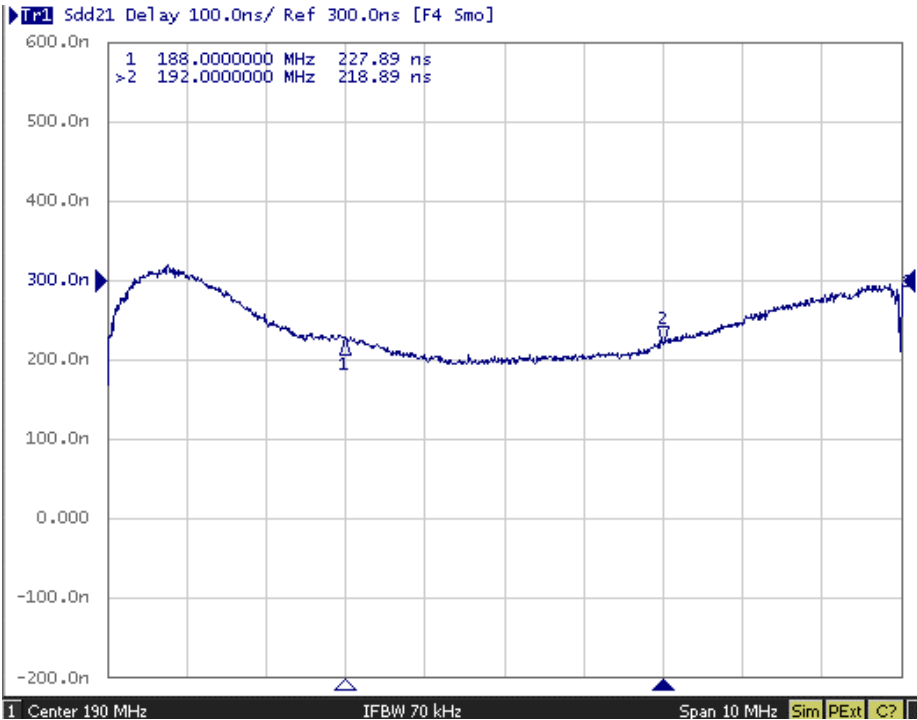
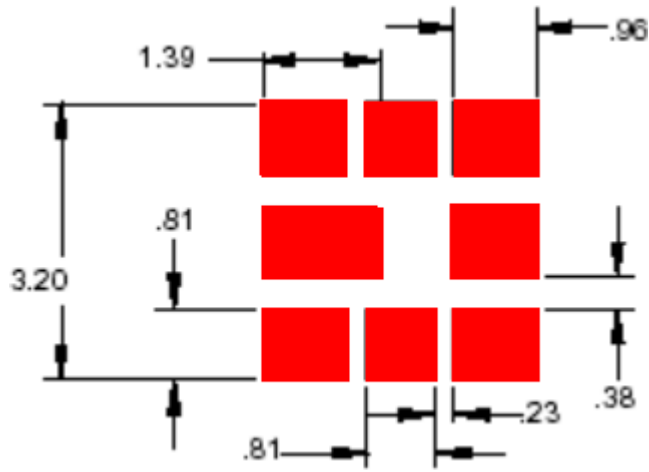


Fig3. Horizontal: 1MHz/Div; Vertical: 100nS/Div,

PCB FOOTPRINT



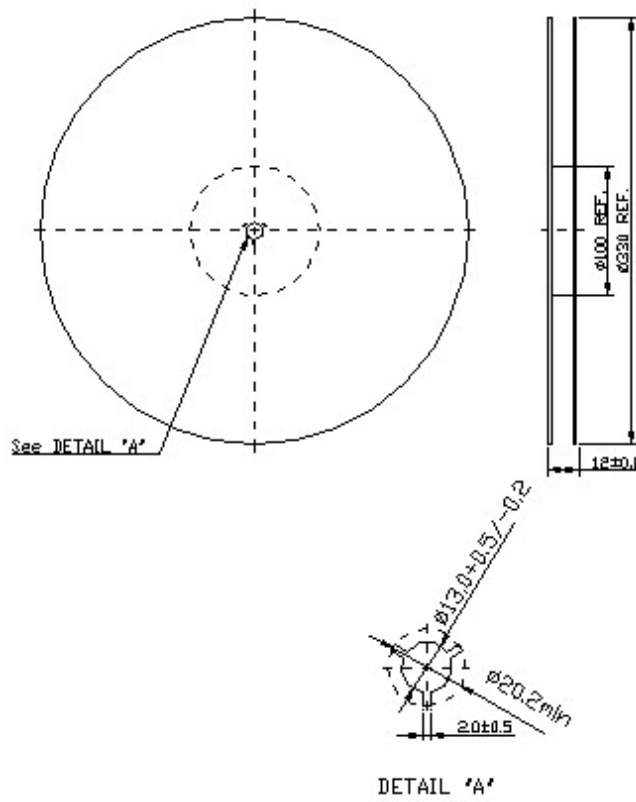
PACKING:

1. REEL DIMENSION

Reel Count:

7" = 500

13" = 3000



2. TAPE DIMENSION

