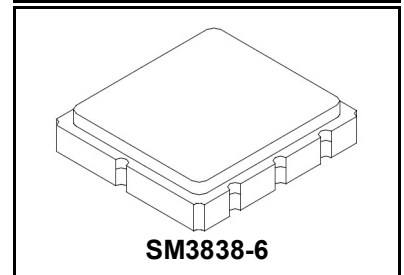


SF2696D

**550 MHz
SAW Filter**



MAXIMUM RATING:

- Input Power Level: 10 dB_m
- DC voltage: 5 V
- Operating Temperature: -30°C to 60°C
- Storage Temperature: -40°C to +85°C

CHARACTERISTICS:

1. Ambient Temperature: 25°C

Item	Unit	Min.	Typ.	Max.
Center frequency, F _c	MHz	-	550	-
Amplitude ripple (538 ~ 562 MHz)	dB	-	1.2	1.7
Insertion loss, IL (538 ~ 562 MHz)	dB	-	2.2	3.0
Group Delay, GD (538 ~ 562 MHz)	ns	-	46	200
Bandwidth @ -3 dB		24	34.9	-
Attenuation (reference from 0dB)				
0.3 ~ 475 MHz	dB	36	41	-
475 ~ 517 MHz	dB	10	18	-
580 ~ 625 MHz	dB	10	22	-
625 ~ 850 MHz	dB	38	43	-
850 ~ 1000 MHz	dB	33	38	-
Source impedance, Z _s	Ω	-	50	-
Load impedance, Z _L	Ω	-	50	-

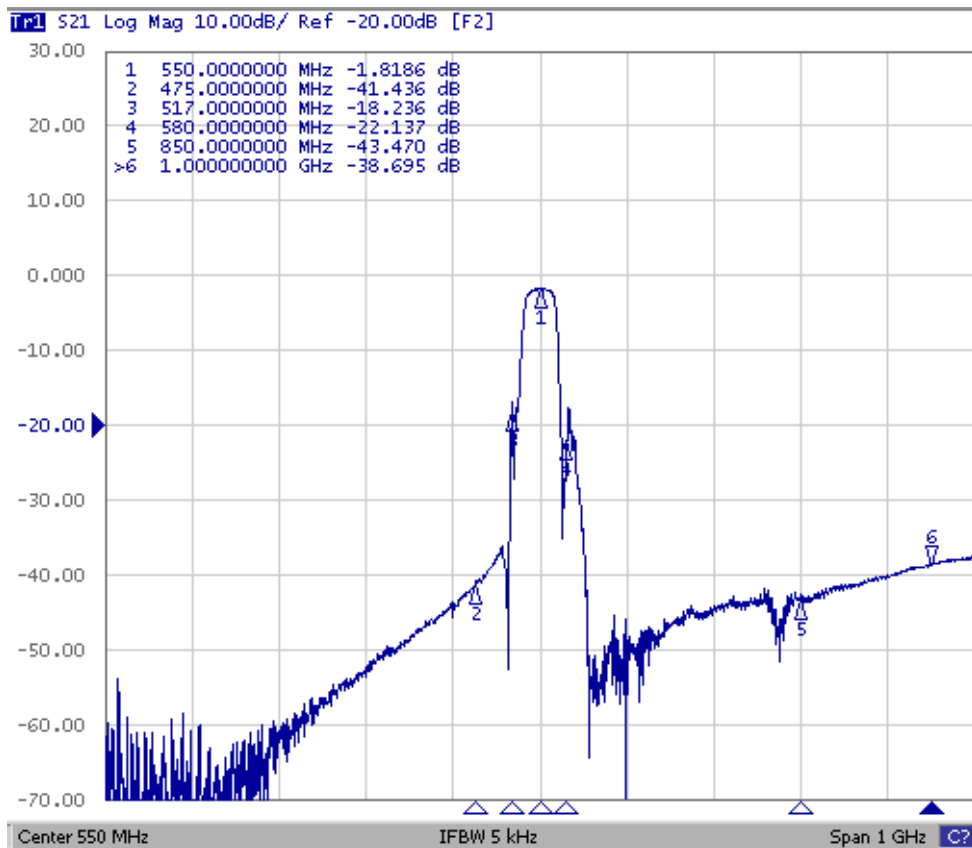
Note1. No matching network required for operation at 50Ω

2. Ambient Temperature: -30°C ~ 60°C

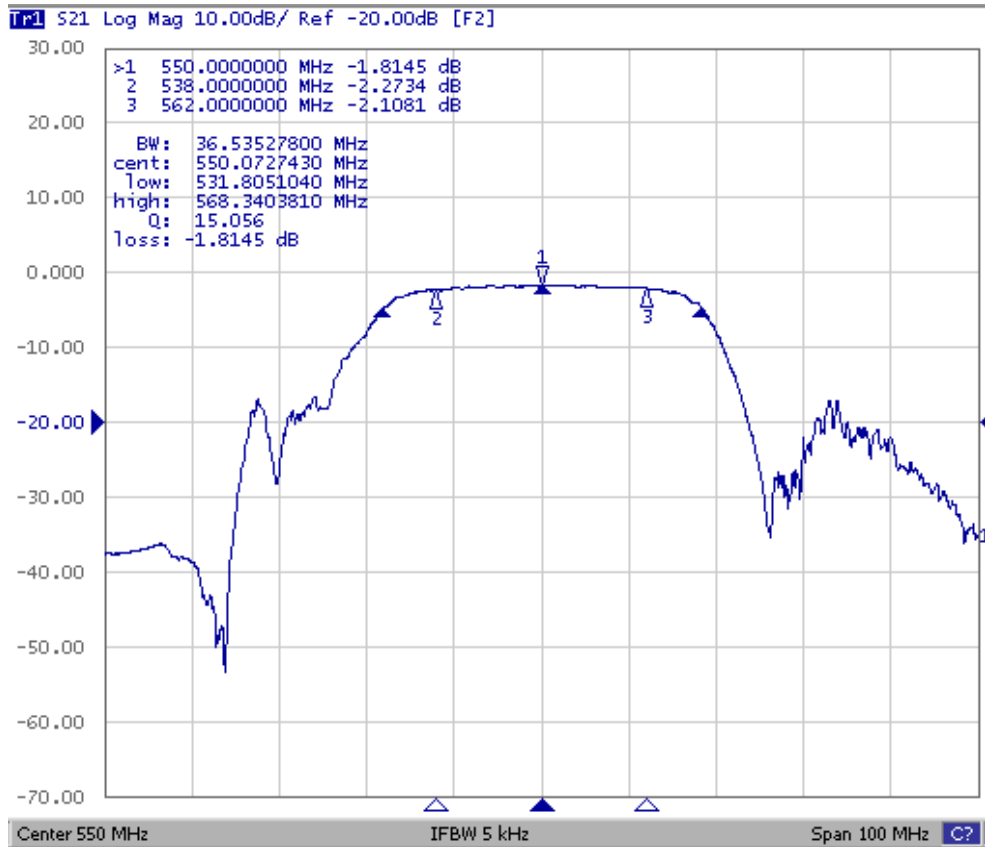
Item	Unit	Min.	Typ.	Max.
Center frequency, Fc	MHz	-	550	-
Amplitude ripple (538 ~ 562 MHz)	dB	-	1.2	2.0
Insertion loss, IL (538 ~ 562 MHz)	dB	-	2.2	4.0
Group Delay, GD (538 ~ 562 MHz)	ns	-	46	200
Bandwidth @ -3 dB		24	34.9	-
Attenuation (reference from 0dB)				
0.3 ~ 475 MHz	dB	36	41	-
475 ~ 517 MHz	dB	10	18	-
580 ~ 625 MHz	dB	10	22	-
625 ~ 850 MHz	dB	38	43	-
850 ~ 1000 MHz	dB	33	38	-
Source impedance, Z _s	Ω	-	50	-
Load impedance, Z _L	Ω	-	50	-

Note1. No matching network required for operation at 50Ω

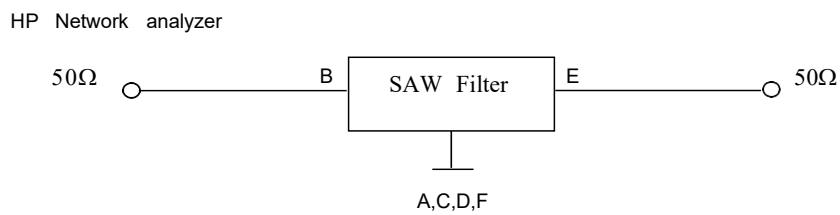
Transfer Function :
Wideband



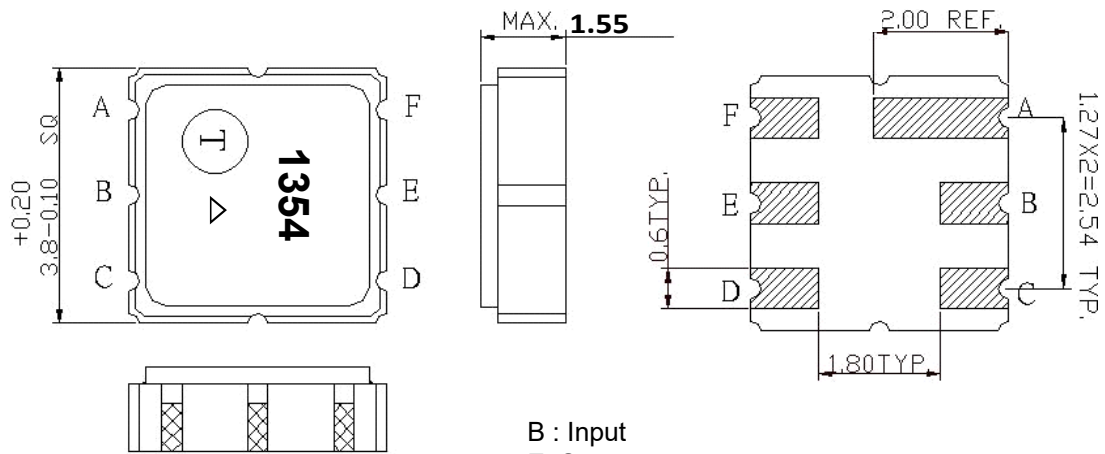
Passband



MEASUREMENT CIRCUIT:



OUTLINE DRAWING:



B : Input
 E: Output
 A,C,D,F Ground
 △:Year Code
 □: Date Code
 Unit: mm

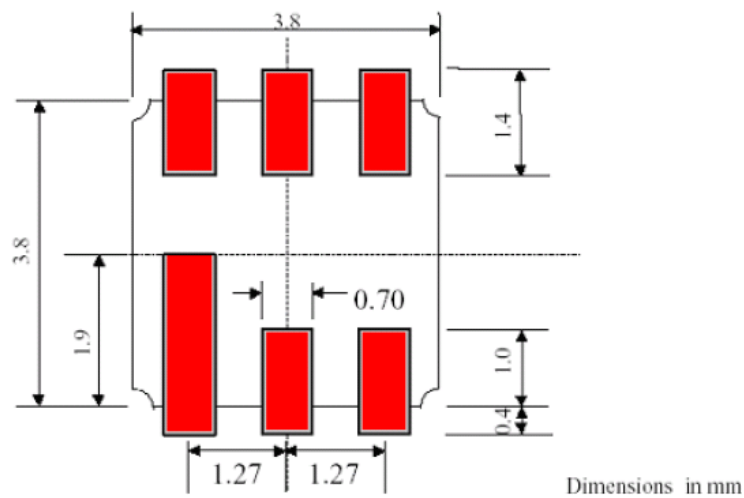
△ Product Year Code

Year	2011	2012
	2013	2014
	2015	2016
Product Code	A	a

Week Code Table

WK01	WK02	WK03	WK04	WK05	WK06	WK07	WK08	WK09	WK10	WK11	WK12	WK13
A	B	C	D	E	F	G	H	I	J	K	L	M
WK14	WK15	WK16	WK17	WK18	WK19	WK20	WK21	WK22	WK23	WK24	WK25	WK26
N	O	P	Q	R	S	T	U	V	W	X	Y	Z
WK27	WK28	WK29	WK30	WK31	WK32	WK33	WK34	WK35	WK36	WK37	WK38	WK39
a	b	c	d	e	f	g	h	i	j	k	l	m
WK40	WK41	WK42	WK43	WK44	WK45	WK46	WK47	WK48	WK49	WK50	WK51	WK52
n	o	p	q	r	s	t	u	v	w	x	y	z

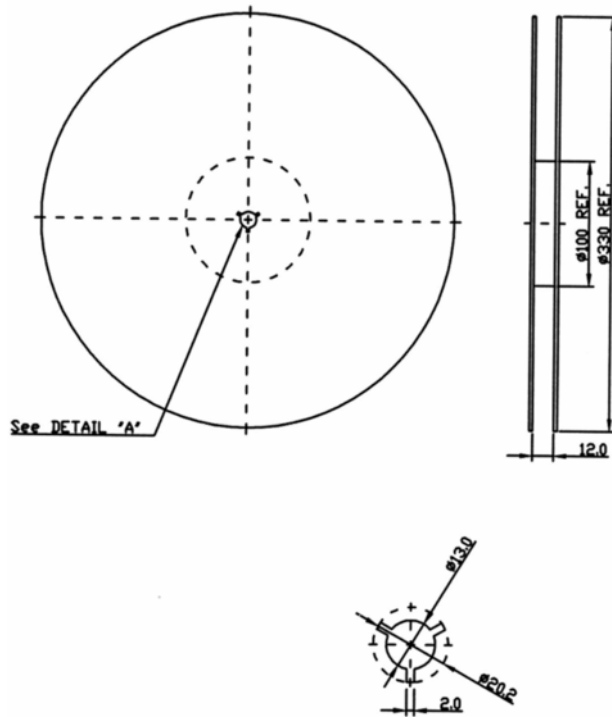
PCB Footprint:



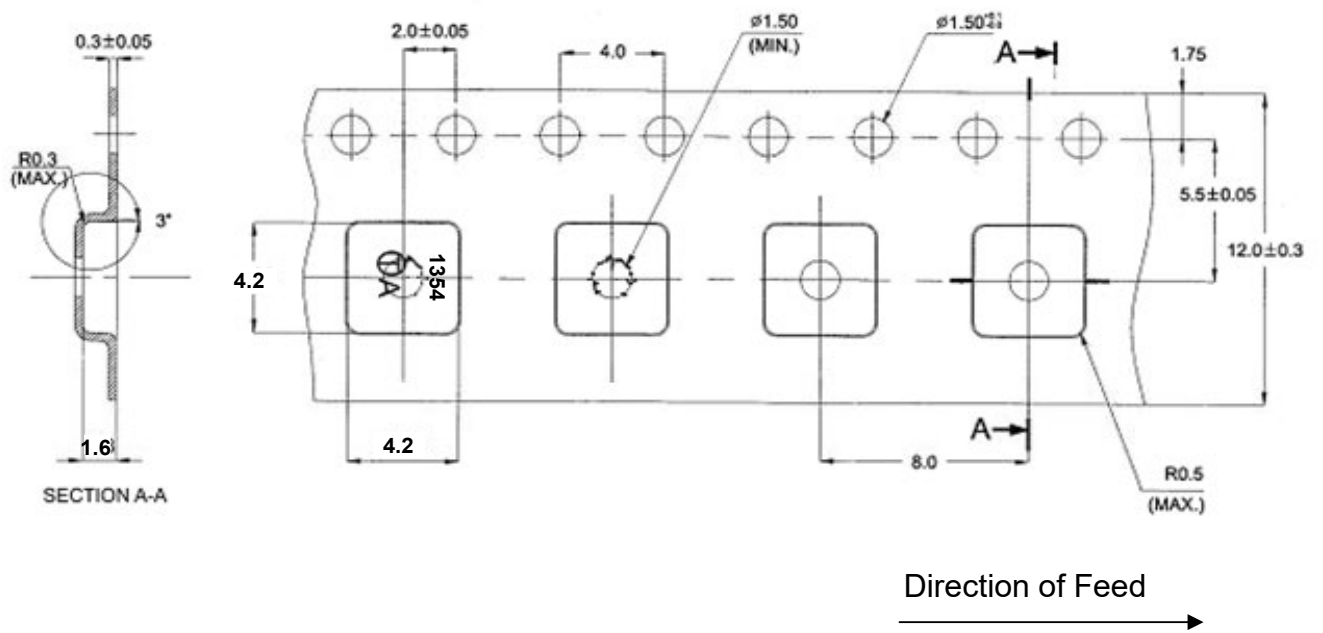
PACKING:

Reel Count:
7" = 500
13" = 3000

1. REEL DIMENSION

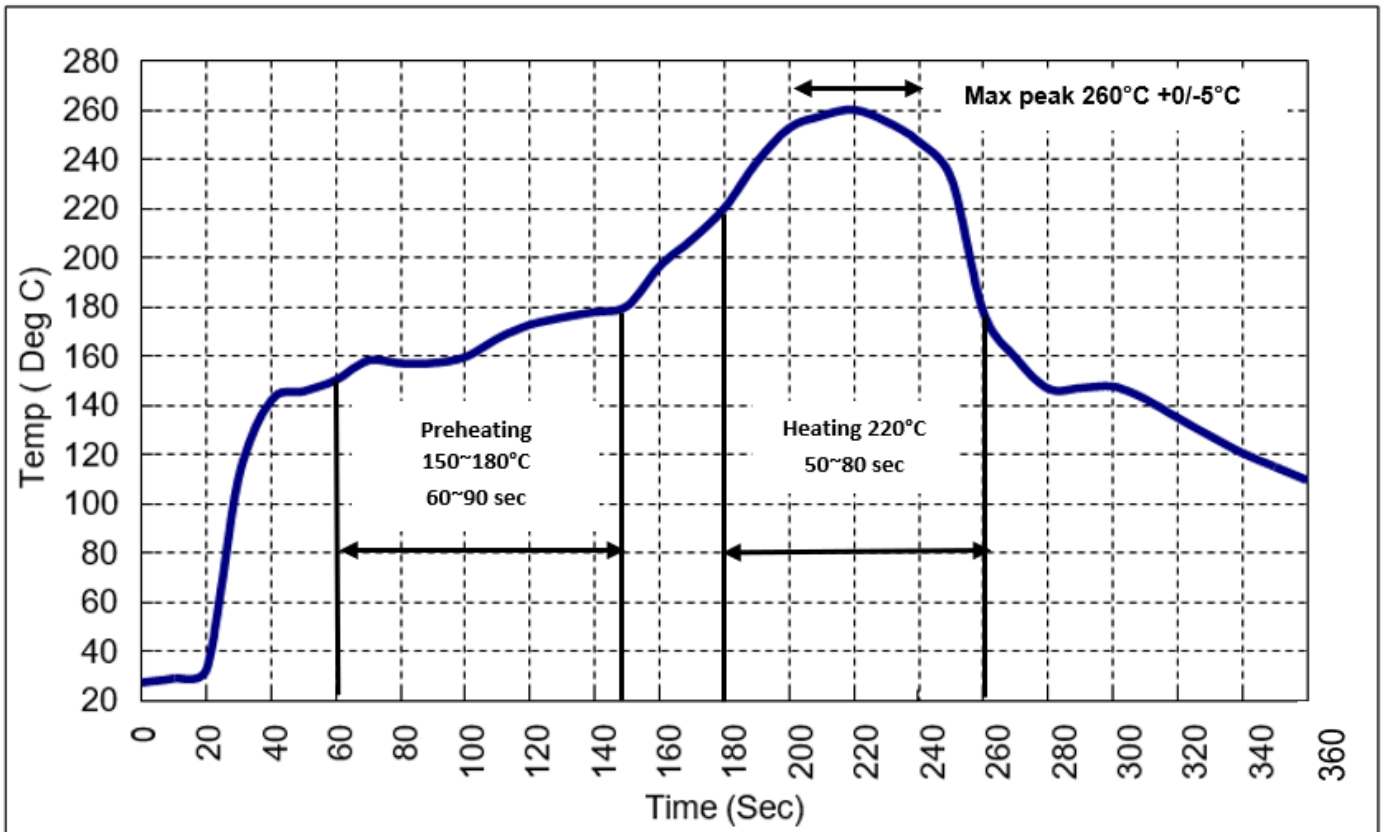


2. TAPE DIMENSION



RECOMMENDED REFLOW PROFILE :

1. Preheating shall be fixed at 150~180°C for 60~90 seconds.
2. Ascending time to preheating temperature 150°C shall be 30 seconds min.
3. Heating shall be fixed at 220°C for 50~80 seconds and at 260°C +0/-5°C peak (10 seconds).
4. Time: 5 times maximum.



CAUTION: Electrostatic Sensitive Device. Observe precautions for handling.

NOTES:

1. The design, manufacturing process, and specifications of this device are subject to change.
2. US or International patents may apply.
3. RoHS compliant from the first date of manufacture.