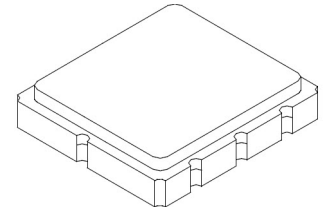


**SF2697D**

**576 MHz  
SAW Filter**



**SM3838-6**

**MAXIMUM RATING:**

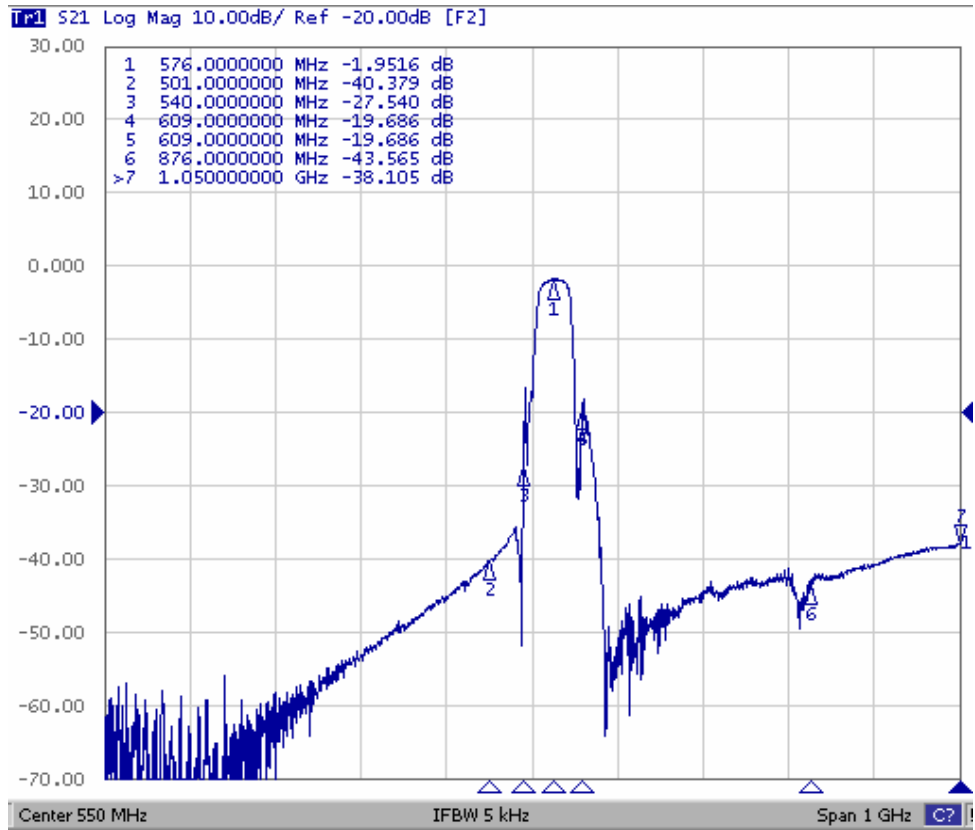
- Input Power Level: 10 dB<sub>m</sub>
- DC voltage: 5 V
- Operating Temperature: -30°C to 60°C
- Storage Temperature: -40°C to +85°C

**CHARACTERISTICS:**

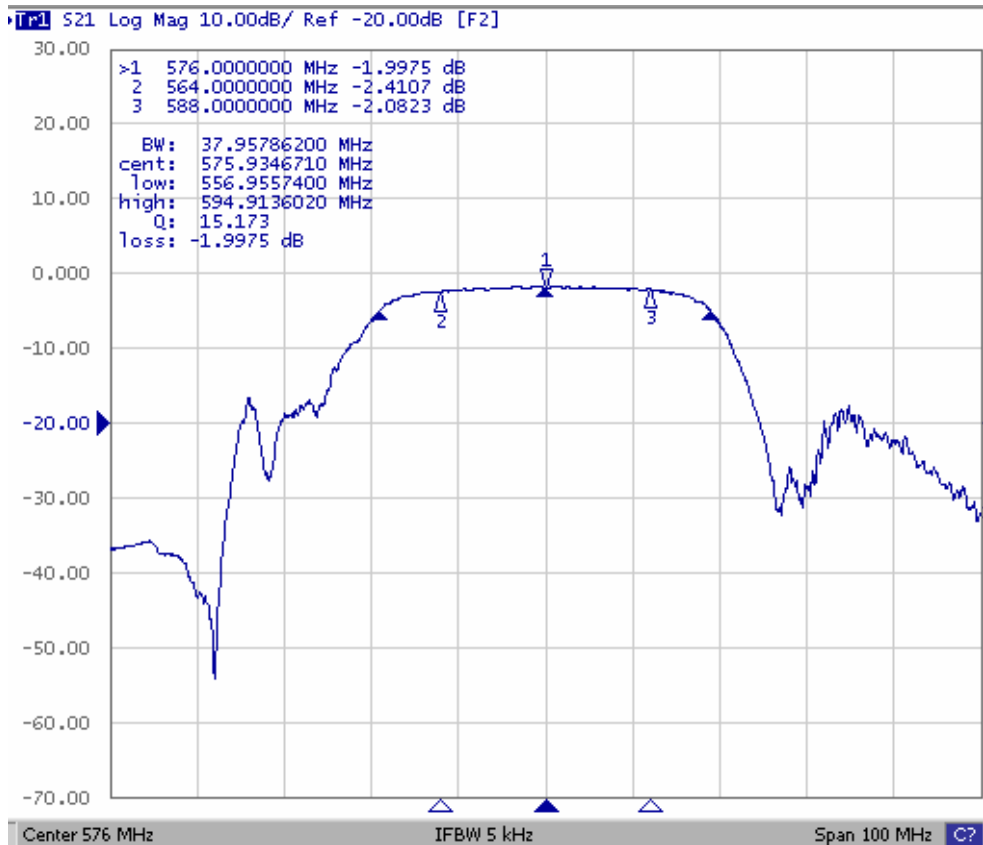
Item	Unit	Min.	Typ.	Max.
Center frequency, F <sub>c</sub>	MHz	-	576	-
Amplitude ripple (564 ~ 588 MHz)	dB	-	1.1	1.7
Insertion loss, IL (564 ~ 588 MHz)	dB	-	2.4	3.0
Group Delay, GD (564 ~ 588 MHz)	ns	-	52	200
Bandwidth @ -3 dB		24	37.9	-
Attenuation (reference from 0dB)				
0.3 ~ 501 MHz	dB	35	35	-
501 ~ 540 MHz	dB	10	27	-
609 ~ 666 MHz	dB	10	19	-
666 ~ 876 MHz	dB	38	43	-
876 ~ 1026 MHz	dB	33	38	-
Source impedance, Z <sub>s</sub>	Ω	-	50	-
Load impedance, Z <sub>L</sub>	Ω	-	50	-

Note1. No matching network required for operation at 50Ω

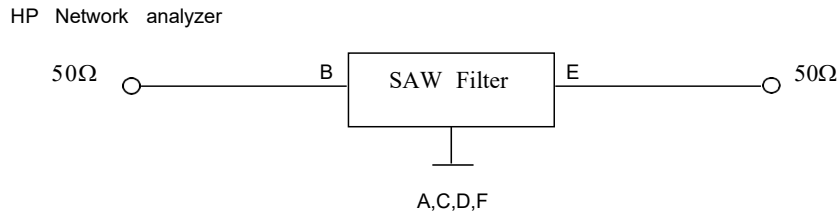
## Transfer Function : Wideband



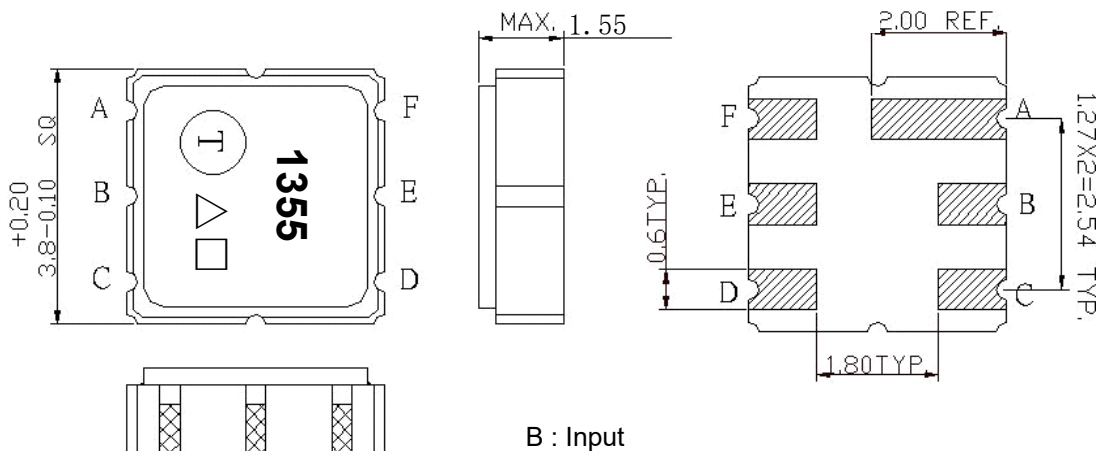
## Passband



**MEASUREMENT CIRCUIT:**



**OUTLINE DRAWING:**



- B : Input
- E: Output
- A,C,D,F Ground
- △:Year Code
- : Date Code(Follow the table provided by planner each year.)Unit: mm

△ Product Year Code

Year	2011	2012
	2013	2014
	2015	2016
	.	.
Product Code	A	a

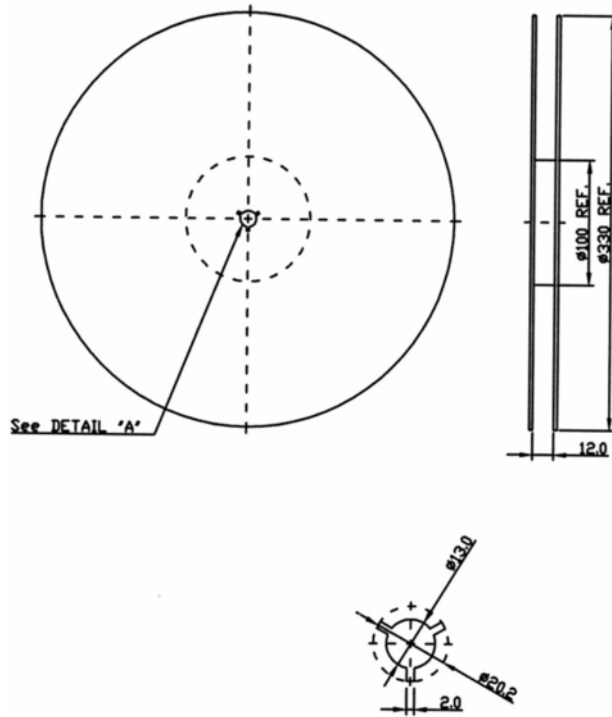
**PACKING:**

Reel Count:

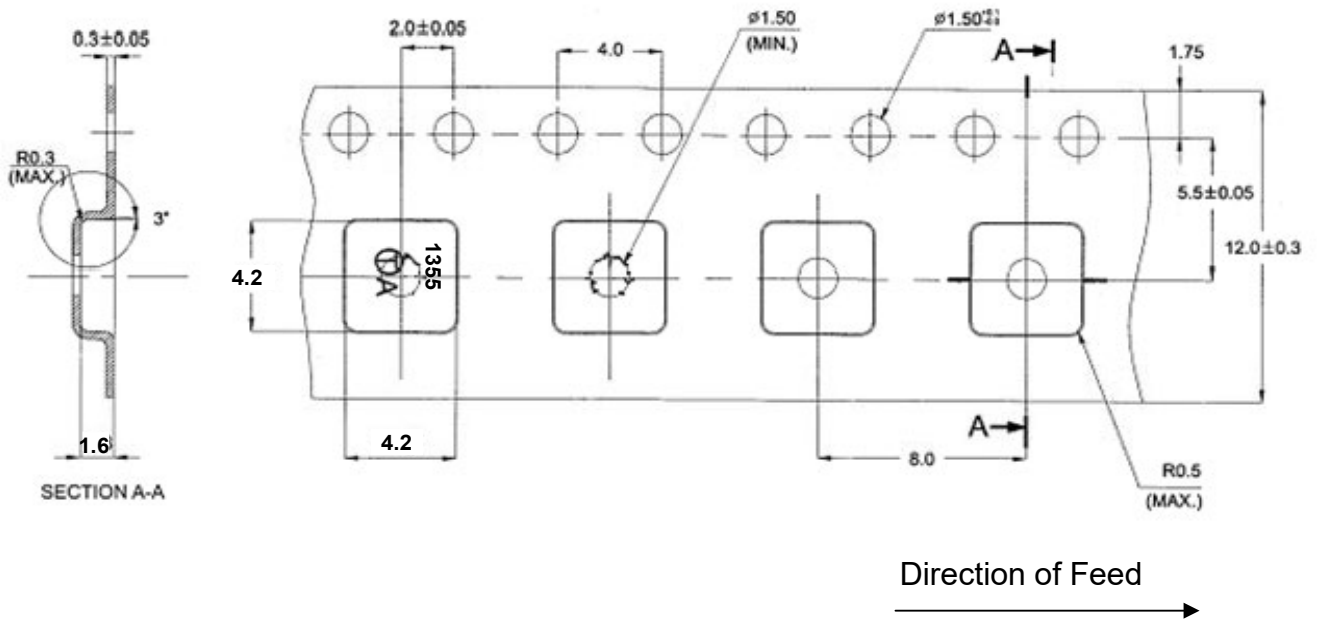
7" = 500

13" = 3000

**1. REEL DIMENSION**

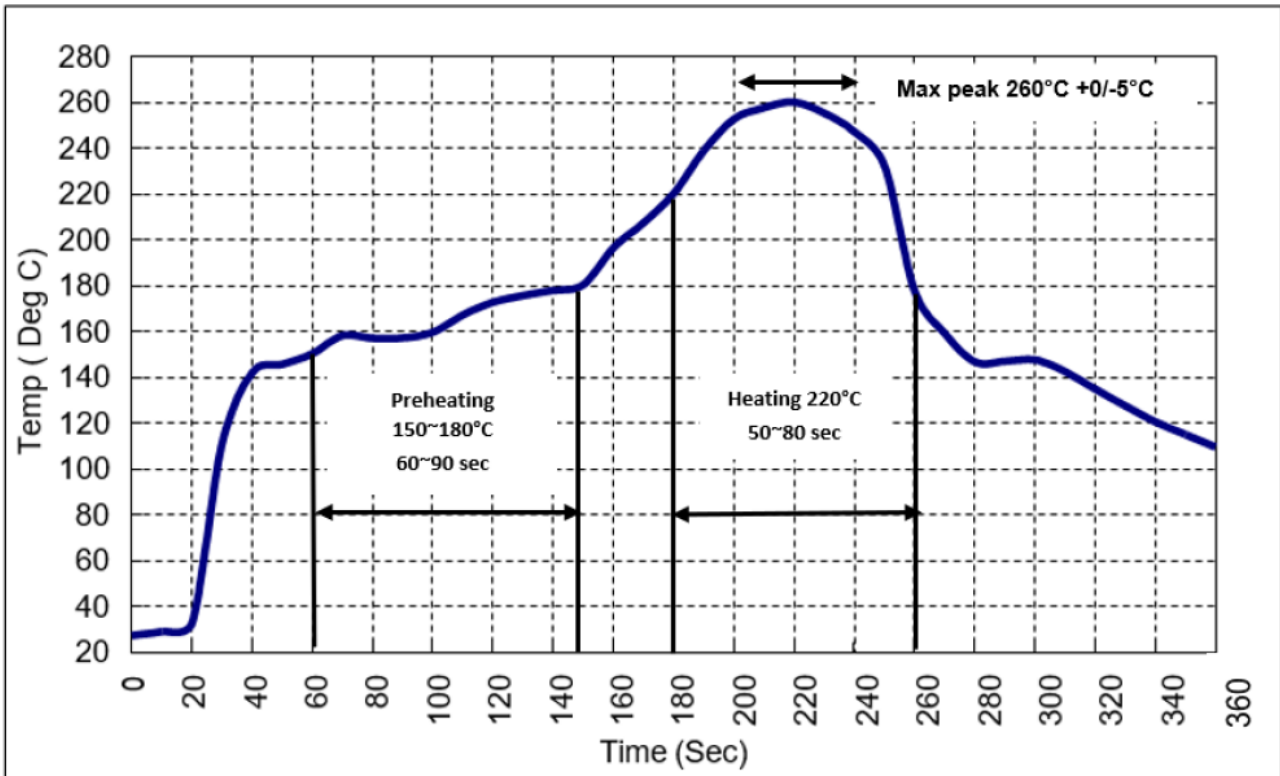


**2. TAPE DIMENSION**



## RECOMMENDED REFLOW PROFILE :

1. Preheating shall be fixed at 150~180°C for 60~90 seconds.
2. Ascending time to preheating temperature 150°C shall be 30 seconds min.
3. Heating shall be fixed at 220°C for 50~80 seconds and at 260°C +0/-5°C peak (10 seconds).
4. Time: 5 times maximum.



**CAUTION: Electrostatic Sensitive Device. Observe precautions for handling.**

### NOTES:

1. The design, manufacturing process, and specifications of this device are subject to change.
2. US or International patents may apply.
3. RoHS compliant from the first date of manufacture.