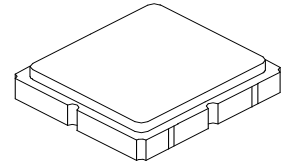


SF2700E

**996 MHz
SAW Filter**



SM3030-6

MAXIMUM RATING:

- Input Power Level: 10 dB_m
- DC voltage: 5 V
- Operating Temperature: -20°C to 65°C
- Storage Temperature: -40°C to +85° C
- Moisture Sensitivity Level: 1

ELECTRICAL CHARACTERISTICS:

Item		Min.	Typ.	Max.
Center frequency	Fc MHz	-	996	-
Insertion loss	992 ~ 1000 MHz IL_{max} (dB)	-	2.8	4.0
Amplitude ripple	992 ~ 1000 MHz (dB)	-	0.5	2.0
Attenuation (Relative to 0 dB)				
10.0 ~ 840.0 MHz	(dB)	45	49	-
840.0 ~ 932.0 MHz	(dB)	40	46	-
932.0 ~ 945.0 MHz	(dB)	30	41	-
1045 ~ 1200 MHz	(dB)	40	45	-
Source impedance	Z_s (Ω)	-	50	-
Load impedance	Z_L (Ω)	-	50	-

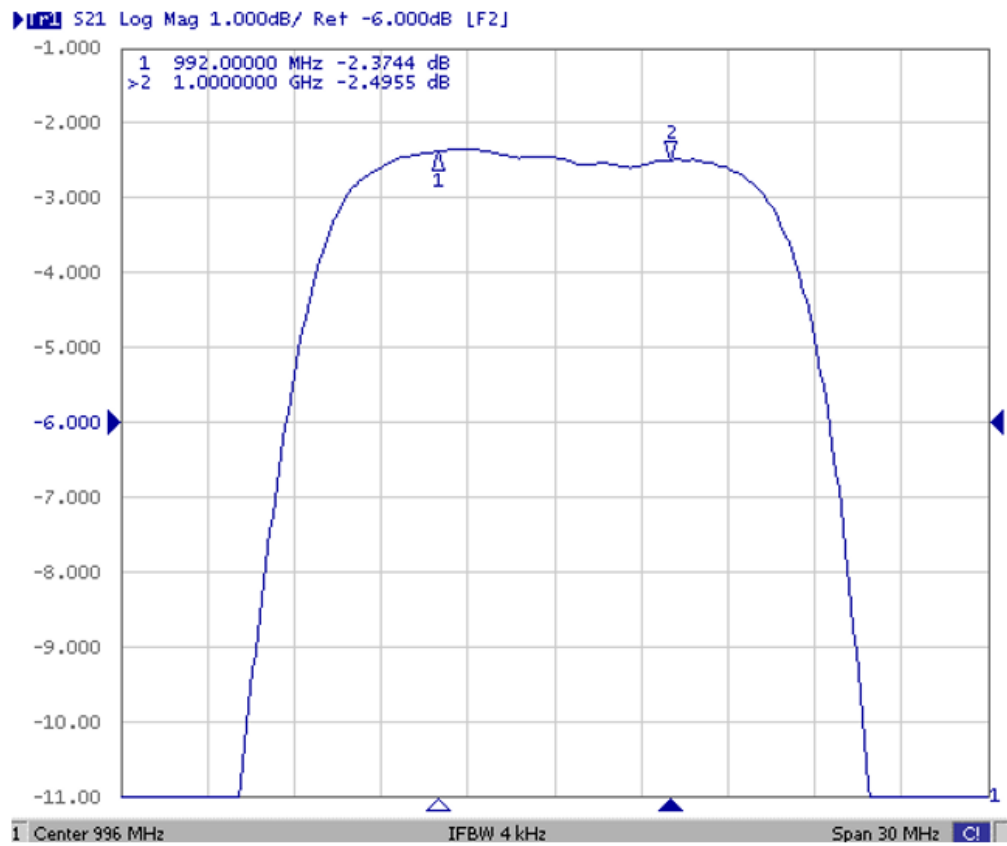
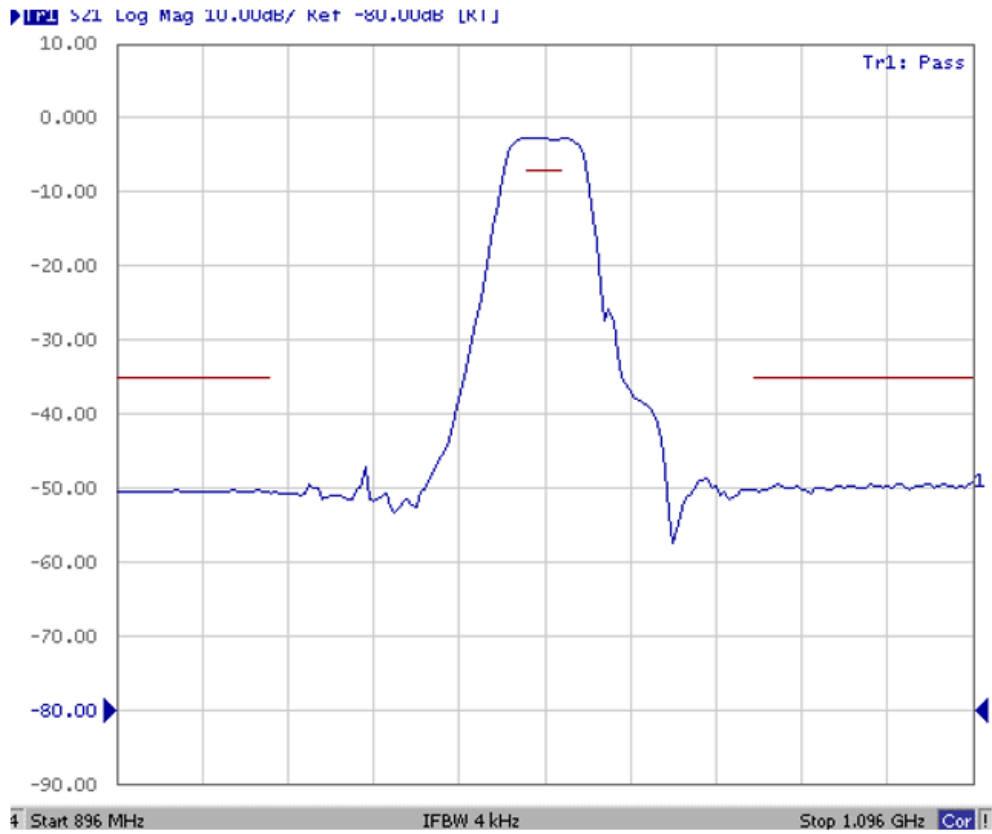
Note1. No matching network required for operation at 50Ω



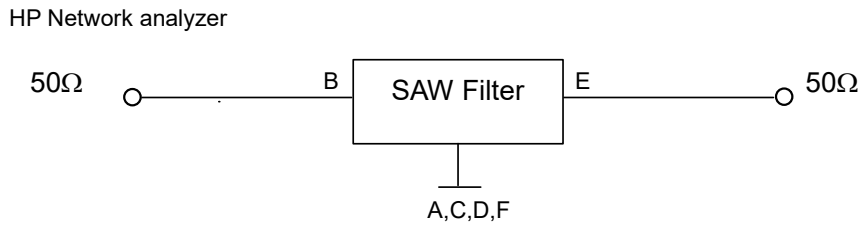
CAUTION: Electrostatic Sensitive Device. Observe precautions for handling.

1. The design, manufacturing process, and specifications of this device are subject to change.
2. US or International patents may apply.
3. RoHS compliant from the first date of manufacture.

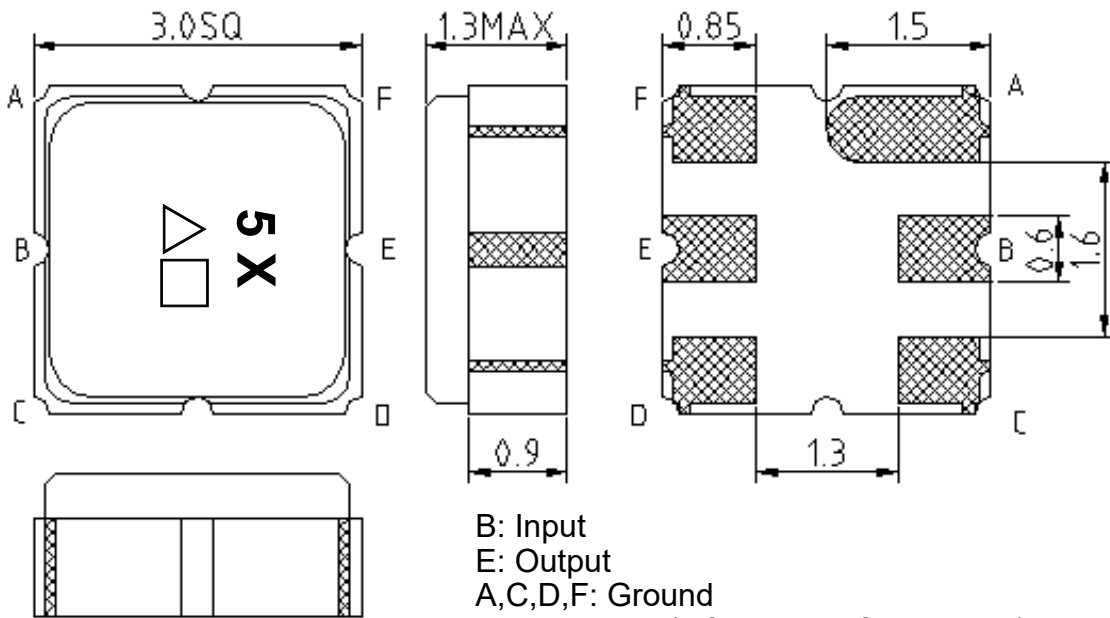
TRANSFER FUNCTION :



MEASUREMENT CIRCUIT:

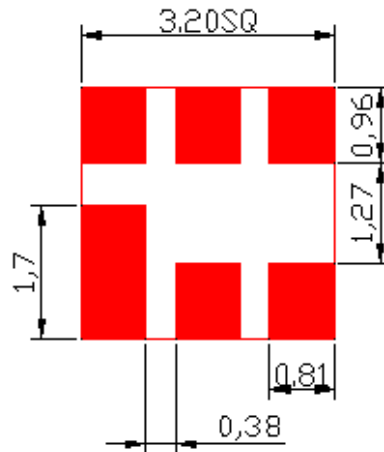


E.OUTLINE DRAWING:



B: Input
 E: Output
 A,C,D,F: Ground
 △: Year code(7 for 2007,8 for 2008,...)
 □: Date code code (Provided by planer each year)
 Unit: mm

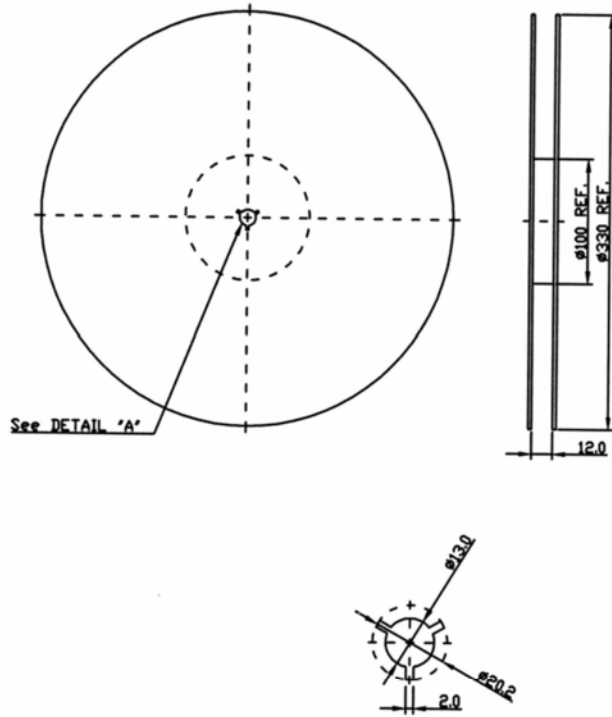
PCB FOOTPRINT:



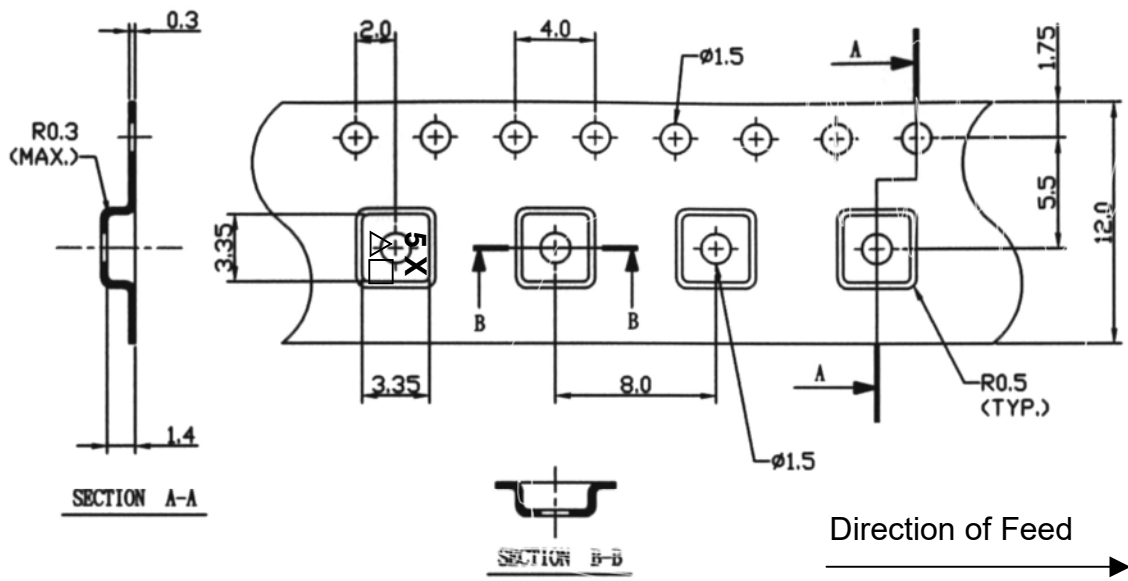
PACKING:

Reel Count:
7" = 1000
13" = 3000

1. REEL DIMENSION



2. TAPE DIMENSION



RECOMMENDED REFLOW PROFILE:

