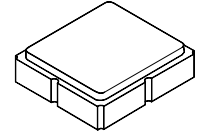


SF2705C

**262 MHz
SAW Filter**



SM3030-8

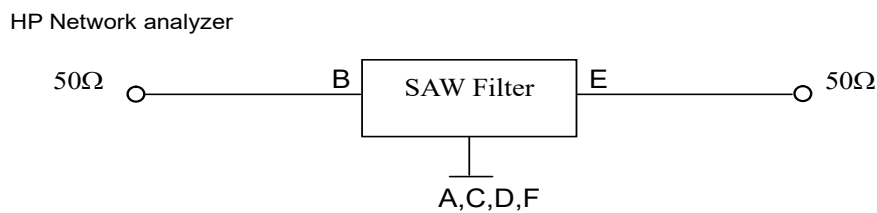
MAXIMUM RATING:

- Input Power Level: 10 dB_m
- DC voltage: 3 V
- Operating Temperature: : -10°C to +50°C
- Storage Temperature: -40°C to +85°C
- Moisture Sensitivity Level: Level 1
- ESD 100V(MM) 200V(HBM)

ELECTRICAL CHARACTERISTICS:

Item		Min.	Typ.	Max.
Center frequency , Fc	MHz	-	262	-
Insertion loss, IL (260 ~ 264 MHz)	dB	-	1.8	3
Amplitude ripple (260 ~ 264 MHz)	dB	-	0.7	2
Attenuation (Reference level from 0 dB)				
Fc-100 ~ Fc-40 MHz	dB	40	47	-
Fc-40 ~ Fc-11 MHz	dB	30	42	-
Fc+11 ~ Fc+40 MHz	dB	15	35	-
Fc+40 ~ Fc+100 MHz	dB	38	43	-
Source impedance	Z _s	Ω	50	-
Load impedance	Z _L	Ω	50	-

MEASUREMENT CIRCUIT:



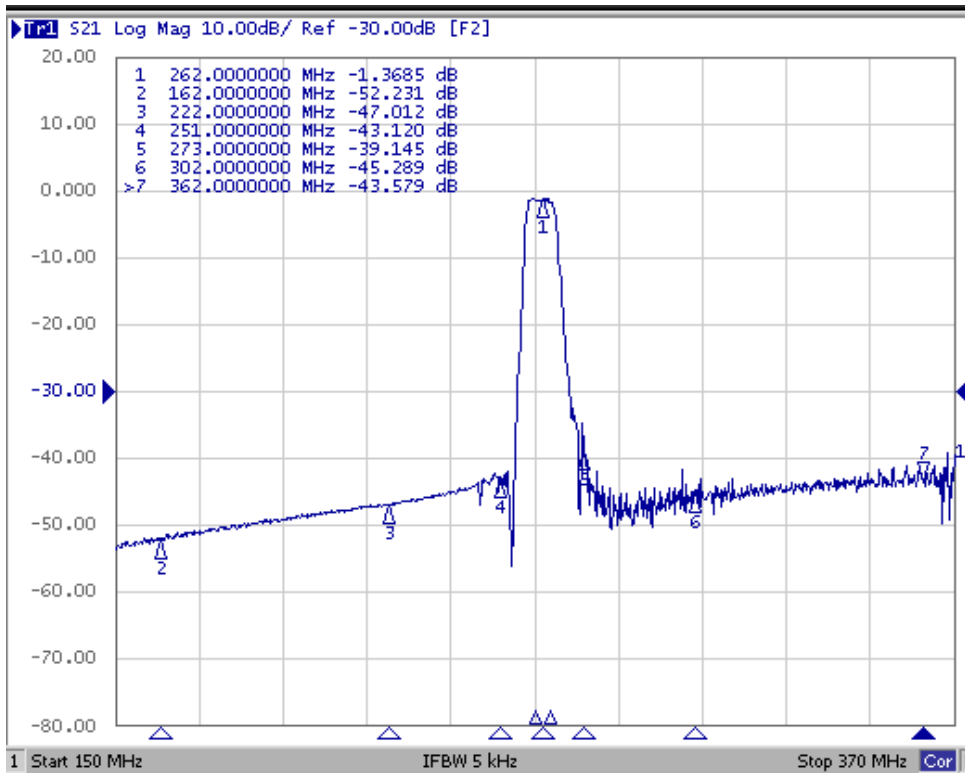
CAUTION: Electrostatic Sensitive Device. Observe precautions for handling.

NOTES:

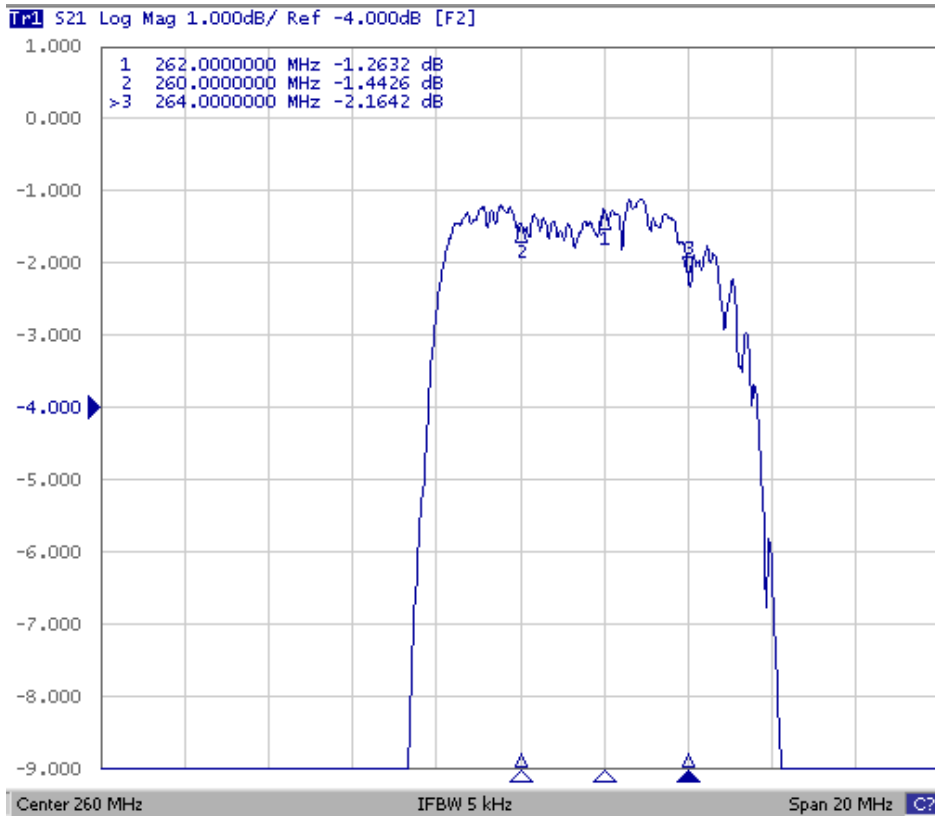
1. The design, manufacturing process, and specifications of this device are subject to change.
2. US or International patents may apply.
3. RoHS compliant from the first date of manufacture.

FREQUENCY CHARACTERISTICS:

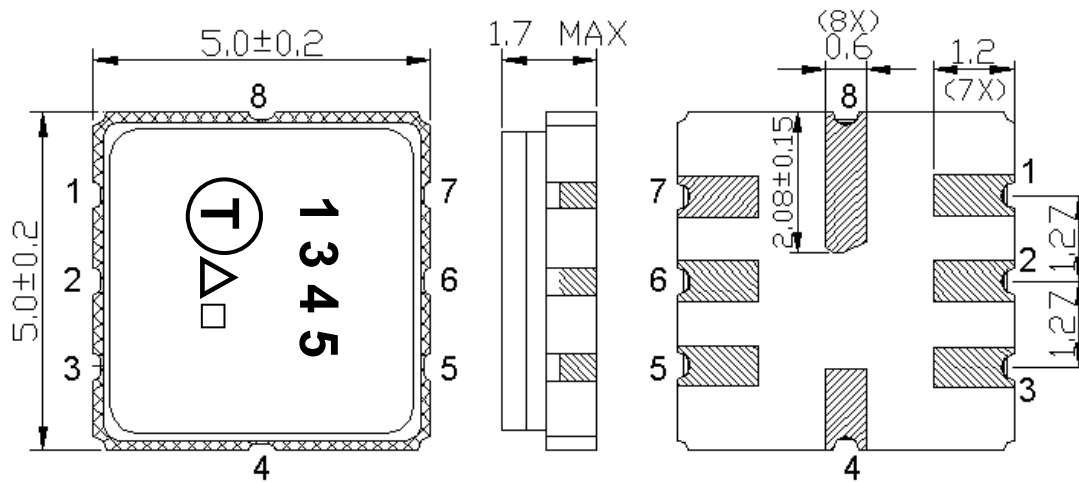
1. Wideband response (span: 150~370MHz)



3. Narrow-band response (span 20MHz)



OUTLINE DRAWING:



#2 : Input
#6 : Output
#1,3,4,5,7,8 : Ground
Unit : mm

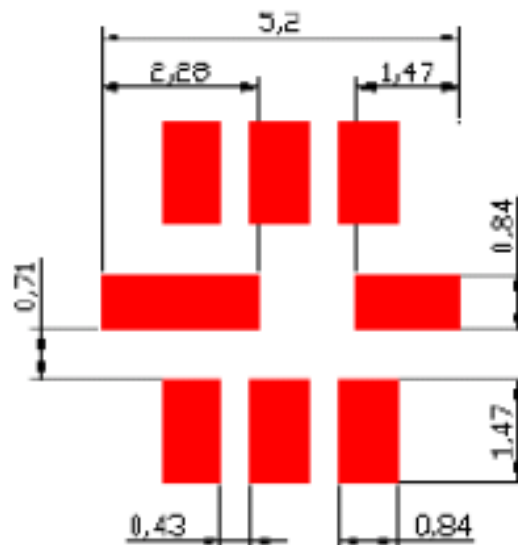
□ Data code : See the table

WK	01	02	...	26	27	28	...	52
Code	A	B	...	Z	a	b	...	z

△ Year code : See the table

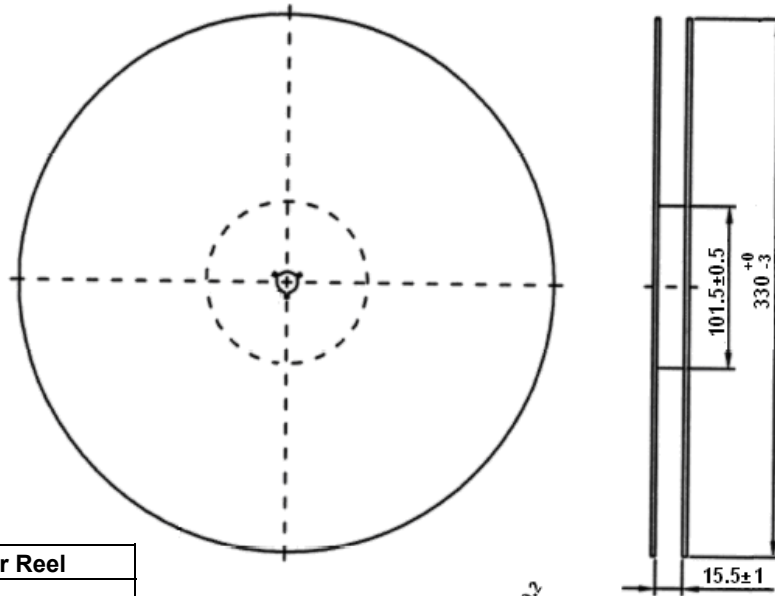
Year	2021	2022	2023	2024
	2025	2026	2027	2028
Code	A	a	<u>A</u>	<u>a</u>

PCB Footprint:

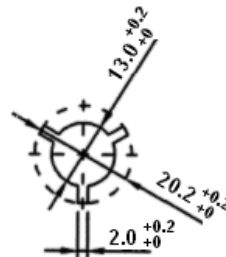


PACKING:

1. REEL DIMENSION

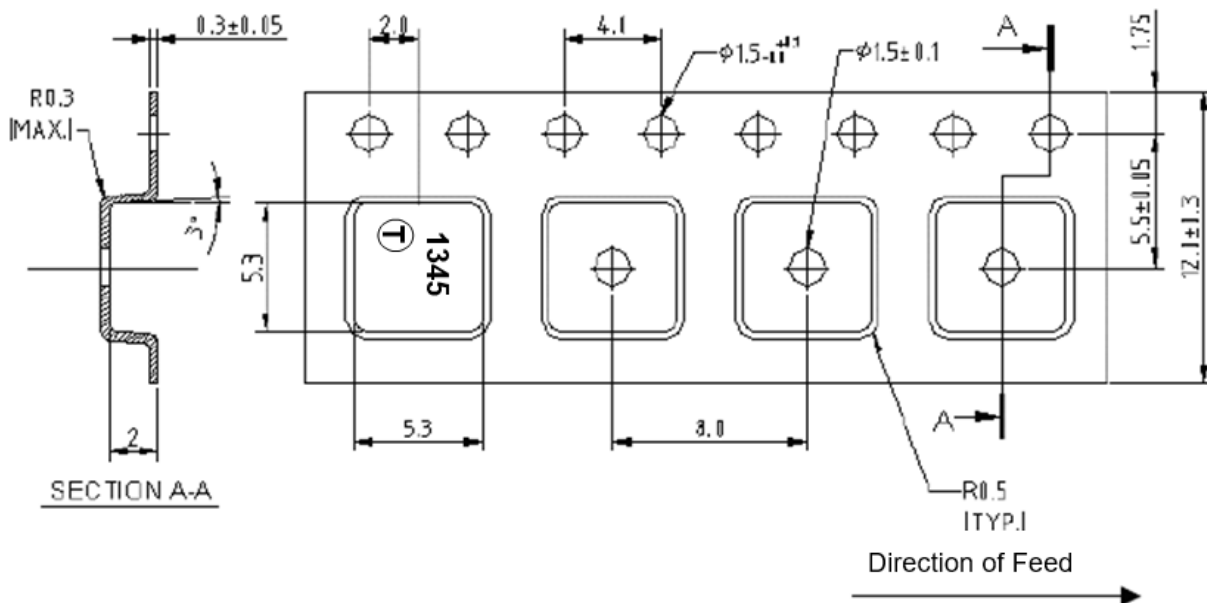


Inches	QTY per Reel
7	500
13	3000



Unit: mm

2. Tape dimension



RECOMMENDED REFLOW PROFILE :

1. Preheating shall be fixed at 150~180°C for 60~90 seconds.
2. Ascending time to preheating temperature 150°C shall be 30 seconds min.
3. Heating shall be fixed at 220°C for 50~80 seconds and at 245~260°C peak (min. 10sec).
4. Time : 2 times.

