



RFM Integrated Device, Inc.

PRODUCT SPECIFICATION

Part Number: SF2718E

Description:
FILTER, SAW, 918.6 MHz,
BW 3.6 MHz, IL 7 dB

Preliminary

A. MAXIMUM RATING:

- 1. Input Power Level: 10 dBm
- 2. DC Voltage : 5 V
- 3. Operating Temperature: 0°C to +80°C
- 4. Storage Temperature: -30°C to +85°C
- 5. Moisture Sensitivity Level: Level 1 (**MSL 1**)

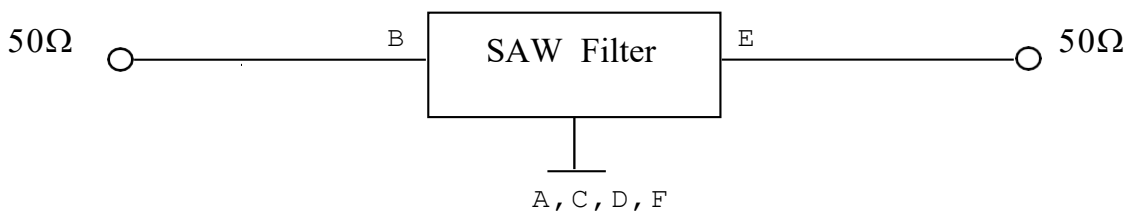


B. ELECTRICAL CHARACTERISTICS:

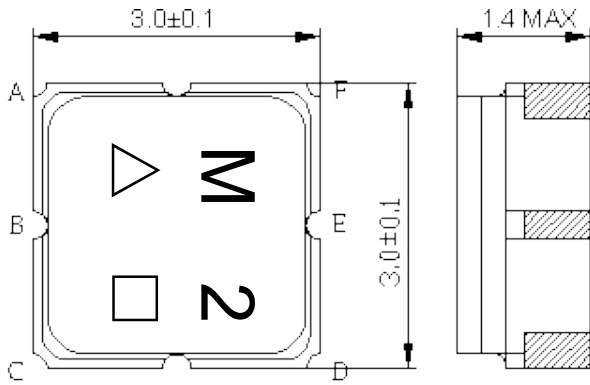
Item	Unit	Min.	Typ.	Max.
Center frequency Fc	MHz	-	918.6	-
Insertion Loss (916.8~920.4 MHz) IL	dB	-	4.2	7
Amplitude Ripple (916.8~920.4 MHz)	dB	-	0.7	4.5
Attenuation (Reference level from 0 dB)				
715 ~ 900 MHz	dB	15	47	-
900 ~ 915 MHz	dB	2.5	6	-
928 ~ 1000 MHz	dB	5	20	-
1000 ~ 1500 MHz	dB	15	41	-
Temperature Coefficient of Frequency	ppm/°C	-	-36	-

C. MEASUREMENT CIRCUIT:

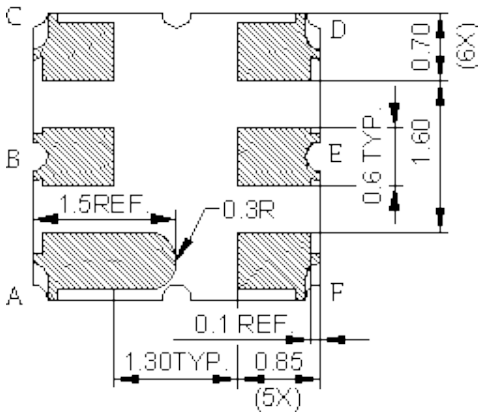
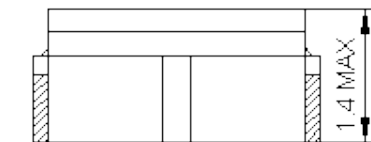
HP Network analyzer



D. OUTLINE DRAWING:



Not Specified Tolerance : +/-0.15 mm
Unit: mm



B: Input
E: Output
A、C、D、F: Ground
Unit: mm

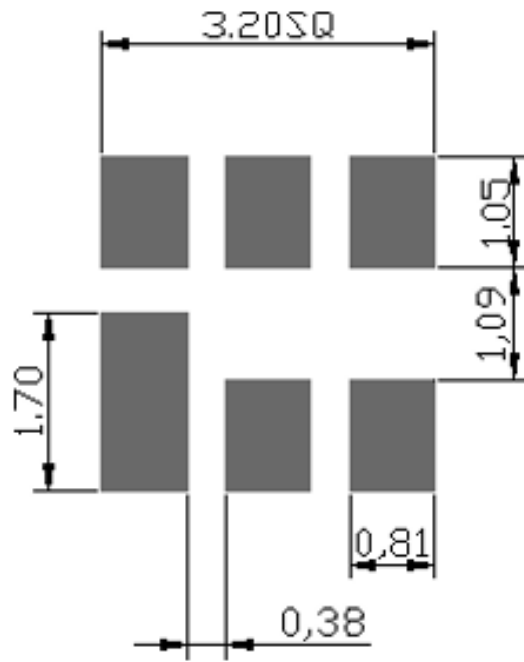
△: Year Code (2011->1,...., 2030->0) 10year cycle

□: Date Code (Follow the table from planner each year)

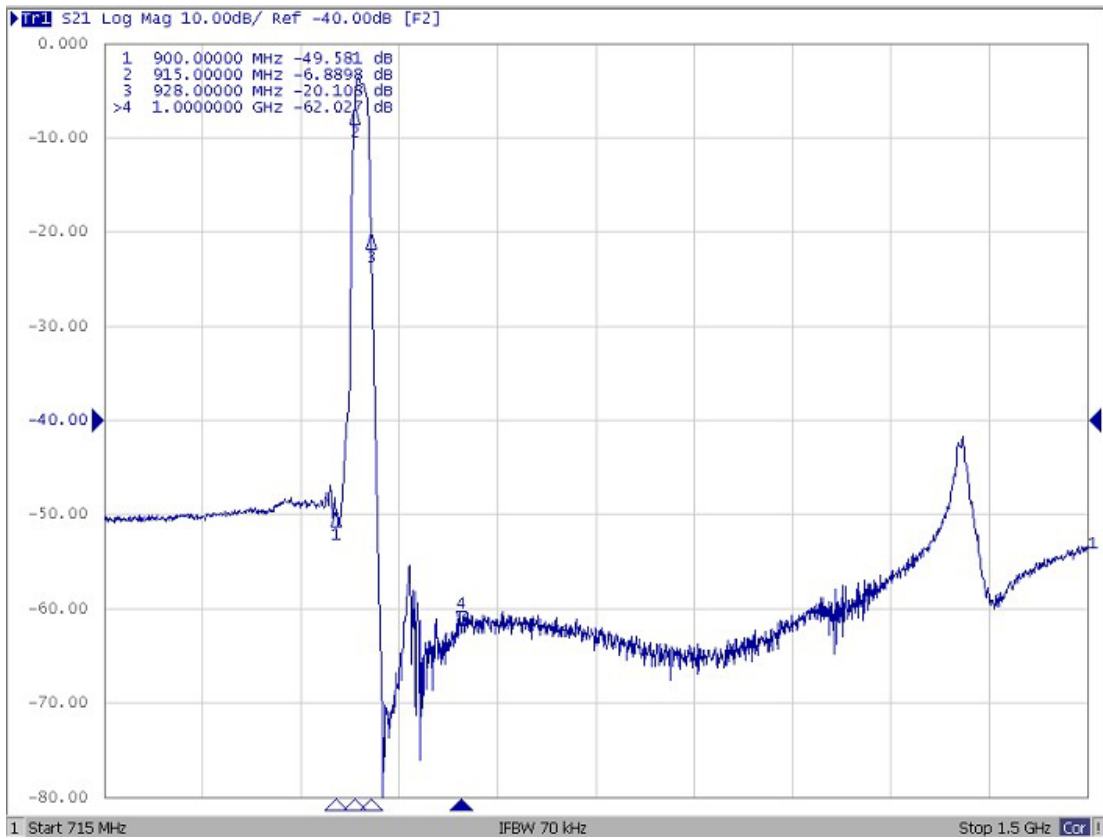
Date Code Table:

WK01	WK02	WK03	WK04	WK05	WK06	WK07	WK08	WK09	WK10	WK11	WK12	WK13
A	B	C	D	E	F	G	H	I	J	K	L	M
WK14	WK15	WK16	WK17	WK18	WK19	WK20	WK21	WK22	WK23	WK24	WK25	WK26
N	O	P	Q	R	S	T	U	V	W	X	Y	Z
WK27	WK28	WK29	WK30	WK31	WK32	WK33	WK34	WK35	WK36	WK37	WK38	WK39
a	b	c	d	e	f	g	h	i	j	k	l	m
WK40	WK41	WK42	WK43	WK44	WK45	WK46	WK47	WK48	WK49	WK50	WK51	WK52
n	o	p	q	r	s	t	u	v	w	x	y	z

E. PCB FOOTPRINT:



F. FREQUENCY CHARACTERISTICS:



H. RECOMMENDED REFLOW PROFILE:

1. Preheating shall be fixed at 150~180°C for 60~90 seconds.
2. Ascending time to preheating temperature 150°C shall be 30 seconds min.
3. Heating shall be fixed at 220°C for 50~80 seconds and at 260°C+0/-5°C peak (20~40sec).
4. Time: 2 times.

