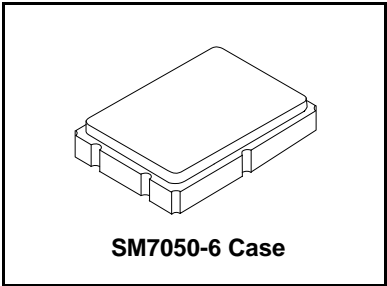


- Crystal Filter
- Surface Mount Seam Weld Package
- 2-pole IF Filter
- High Reliability
- Complies with Directive 2002/95/EC (RoHS)
- Moisture Sensitivity Level: 1

RoHS
Compliant

XFL8001

**76.8 MHz
Crystal Filter**

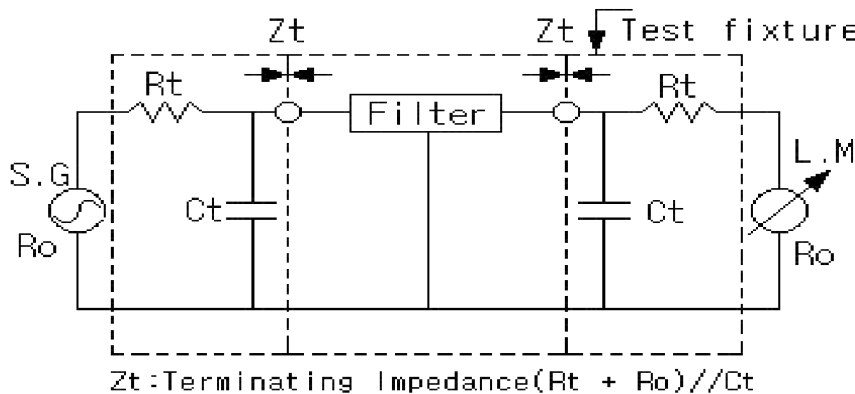


Surface mount 5.0 x 7.0 x 1.27 mm Crystal Filter

Electrical Characteristics

| Characteristic | Sym | Notes | Minimum | Typical | Maximum | Units |
|--|----------------|-------|--------------------------|------------|---------|-------|
| Center Frequency | F ₀ | | 76.8 MHz, Third Overtone | | | MHz |
| Insertion Loss | | | | | 3.0 | dB |
| Ripple (@ ±4 kHz) | | | | | 1.0 | dB |
| 3 dB Passband | | | | ±4 | | kHz |
| Stopband (@ ±60 kHz) | | | 35 | | | dB |
| Spurious | | | 10 | | | dB |
| Terminating Impedance | | | | 1500Ω/-1.4 | | pF |
| Power Level | | | | | 10 | dBm |
| Operating Temperature (without lost of function) | | | -40 ~ +85 | | | °C |
| Lid Symbolization (Y = Year, WW = Week, S = Shift) | | | 8001 YWWS | | | |

Testing Circuit



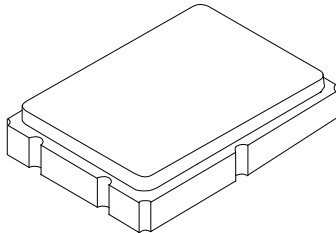
| | |
|----------------|-----------|
| R _t | 1450 ohms |
| R _o | 50 ohms |
| C _t | -1.4 pF |

 **CAUTION: Electrostatic Sensitive Device. Observe precautions for handling.**
NOTES:

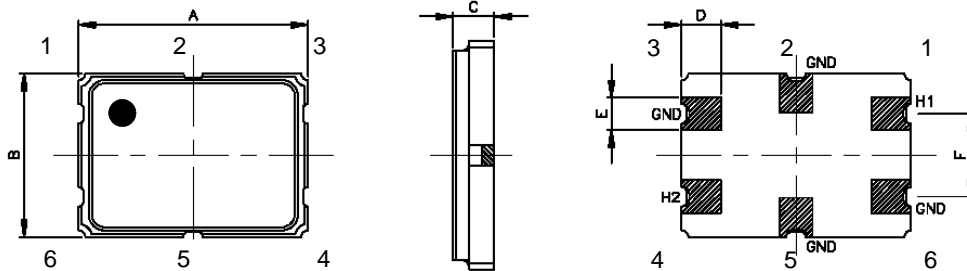
1. The design, manufacturing process, and specifications of this device are subject to change.
2. US or International patents may apply.
3. RoHS compliant from the first date of manufacture.

SM7050-6 Case

6-Terminal Surface-Mount Case 5.0 x 7.0 mm Nominal Footprint



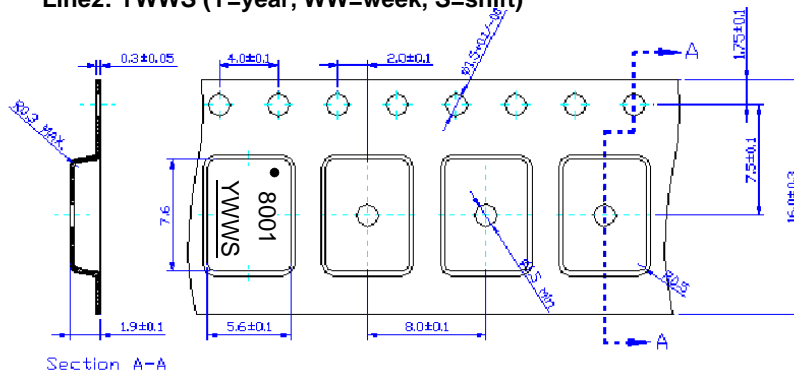
Mechanical Dimensions (mm):



| A | B | C | D | E | F |
|-------|-------|-------|-------|-------|-------|
| 7.00 | 5.00 | 1.27 | 1.21 | 0.99 | 2.54 |
| ±0.18 | ±0.18 | ±0.20 | ±0.13 | ±0.13 | ±0.13 |

Tape Dimensions (mm):

Marking
Line1: 8001
Line2: YWWS (Y=year, WW=week, S=shift)



Recommended Reflow Profile

1. Preheating shall be fixed at 150~180°C for 60~90 seconds.
2. Ascending time to preheating temperature 150°C shall be 30 seconds min.
3. Heating shall be fixed at 220°C for 50~80 seconds and at 260°C +0/-5°C peak (10 seconds).
4. Time: 5 times maximum.

